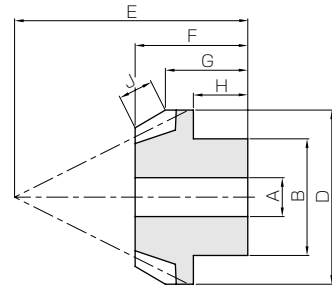




DB Injection Molded Bevel Gears



Specifications	
Precision grade	JIS B 1704 grade 8
Gear teeth	Gleason
Pressure angle	20°
Material	Duracon (M90-44)
Heat treatment	—
Tooth hardness	110 ~ 120HRR



B1

Catalog No.	Gear ratio	Module	No. of teeth	Shape	Bore	Hub dia.	Pitch dia.	Outside dia.	Mounting distance	Total length	Crown to back length
					AH7	B	C	D	E	F	G
DB0.5-4020	2	m0.5	40	B9	4	12	20	20.29	12	8.33	7.29
DB0.5-2040			20	B1	3	8	10	11.2	16	8.46	6.3
DB0.8-4020		m0.8	40	B9	5	15	32	32.47	18	11.91	10.47
DB0.8-2040			20	B1	4	12	16	17.92	24	11.5	8.48
DB1-4020	2	m1	40	B9	6	18	40	40.59	22	14.45	12.58
DB1-2040			20	B1	5	15	20	22.4	30	14.49	10.6

[Caution on Product Characteristics]

- ① The allowable torques shown in the table are the calculated values according to the assumed usage conditions. Please see page 451 for more details.
- ② The bore tolerance is generally -0.05 to -0.1 but may be + values at the central portion of the hole.
- ③ To find the dimensional tolerance of these gears, please see the Dimensional Tolerance Table.

Spur Gears
 Helical Gears
 Internal Gears
 Racks
 CP Racks & Pinions
 Miter Gears
 Bevel Gears
 Screw Gears
 Worm Gear Pair
 Bevel Gearboxes
 Other Products



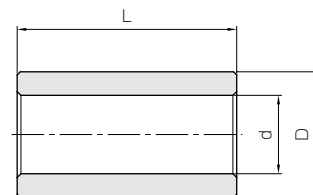
BB Sintered Metal Bushings



Sintered Metal Bushings



The table shows a series of standard metal bushings that can be pressed into standard Injection Molded Gears. They can be used as bearing metal on idler gears or to reduce the bore of the gears.



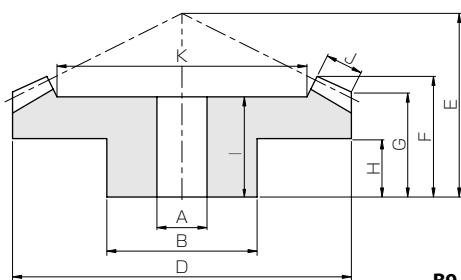
T8

Catalog No.	I.D. of bushing	O.D. of bushing	Length	Products that can use the bushing
	d ^{+0.02} / ₀	D ^{+0.02} / _{-0.01}	L _{-0.3}	
BB30507	3	5	7	DB0.8
BB40612	4	6	12	DB1

Material : Oil impregnated sintered bronze.



Injection Molded Bevel Gears



B9

Hub width H	Length of bore I	Face width J	Holding surface dia. K	Allowable torque (N-m)		Backlash (mm)	Weight (kg)	Catalog No.
				Bending strength	Bending strength			
4	7	2.5	14.41	0.24	0.025	0.03~0.09	2.00	DB0.5-4020 DB0.5-2040
4	—		—	0.092	0.0094		0.54	
6	10	3.5	24.17	0.91	0.093	0.03~0.11	6.26	DB0.8-4020 DB0.8-2040
5	—		—	0.34	0.035		1.87	
7	12	4.5	29.94	1.59	0.16	0.03~0.13	11.9	DB1-4020 DB1-2040
7	—		—	0.60	0.061		3.54	

[Caution on Secondary Operations] ① Avoid performing secondary operations as reworking material may expose air bubbles (voids).

■ Dimensional tolerance table (Unit : mm)

Range	Tolerance
below 3 mm	± 0.20
3 up to 6 mm	± 0.25
6 up to 10 mm	± 0.30
10 up to 18 mm	± 0.35
18 up to 30 mm	± 0.40
30 mm up	± 0.50

Spur
GearsHelical
GearsInternal
Gears

Racks

CP Racks
& PinionsMiter
GearsBevel
GearsScrew
GearsWorm
Gear PairBevel
GearboxesOther
Products