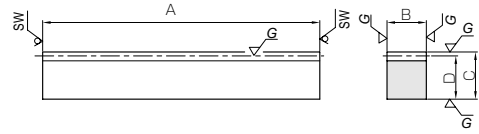




Specifications	
Precision grade	KHK R 001 grade 1
Gear teeth	Standard full depth
Pressure angle	20°
Material	SCM440
Heat treatment	Thermal refining only
Tooth hardness	250 ~ 285HB



* SW Saw Blade Finished

R1

Catalog No.	Pitch mm (Module)	Effective no. of teeth	Shape	Total length				Allowable force (N)		Allowable force (kgf)		Weight (kg)
				A	B	C	D	Bending strength	Surface durability	Bending strength	Surface durability	
KRGCP5-100 KRGCP5-500	CP5 (1.5915)	18 99	R1	98 505	15	20	18.41	3660	1560	373	159	0.21 1.09
KRGCP10-100 KRGCP10-500	CP10 (3.1831)	8 49	R1	98 505	30	35	31.82	14600	6230	1490	635	0.73 3.78

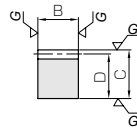
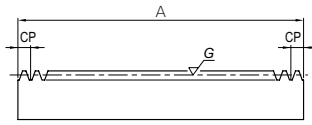
Catalog No.	Pitch mm (Module)	No. of teeth	Shape	Total length				Allowable force (N)		Allowable force (kgf)		Weight (kg)
				A	B	C	D	Bending strength	Surface durability	Bending strength	Surface durability	
KRGCPF5-1000 KRGCPF10-1000	CP5 (1.5915) CP10 (3.1831)	200 100	RF RF	1000 1000	15 30	20 35	18.41 31.82	3660 14600	1560 6230	373 1490	159 635	2.17 7.49

Catalog No.	Pitch mm (Module)	No. of teeth	Shape	Total length				Mounting hole dimensions			No. of mounting holes	Mounting screw size
				A	B	C	D	E	F	G		
KRGCPD5-500 KRGCPD10-500	CP5 (1.5915) CP10 (3.1831)	100 50	RD RD	500 500	15 30	20 35	18.41 31.82	8 14	40 40	140 140	4 4	M5 M10

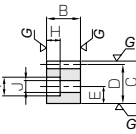
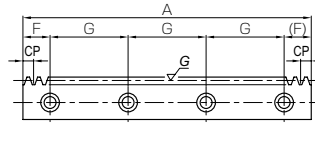
[Caution on Product Characteristics]

- ① The allowable forces shown in the table are the calculated values according to the assumed usage conditions. Please see page 401 for more details.
- ② Backlash of racks vary depending on mating pinions. Please calculate the backlash in accordance with the backlash of the mating pinion and values in the table "Backlash of Rack Tooth (Amount of Tooth-Thinning)" (Page 375).
- ③ After attaching the racks to the base, please fasten with dowel pins. Clamping only with mounting screws could possibly cause the screws to be broken, due to a heavy load.

Spur Gears
 Helical Gears
 Internal Gears
 Racks
 CP Racks & Pinions
 Miter Gears
 Bevel Gears
 Screw Gears
 Worm Gear Pair
 Bevel Gearboxes
 Other Products



RF



RD

*** Orders for special, customized ground racks are accepted within the following specifications: CP20, Total length (A): Max. 1000mm, Height (C): Max. 90mm.**

Counterbore dimensions			Allowable force (N)		Allowable force (kgf)		Weight (kg)	Catalog No.
H	I	J	Bending strength	Surface durability	Bending strength	Surface durability		
6	10	6	3660	1560	373	159	1.06	KRGCPD5-500
10.8	17.5	11	14600	6230	1490	635	3.61	KRGCPD10-500

[Caution on Secondary Operations]

① Please read "Caution on Performing Secondary Operations" (Page 402) when performing modifications and/or secondary operations for safety concerns. Haguruma Kobo, the KHK's system for quick modification of KHK stock gears is also available.

- Spur Gears
- Helical Gears
- Internal Gears
- Racks
- CP Racks & Pinions
- Miter Gears
- Bevel Gears
- Screw Gears
- Worm Gear Pair
- Bevel Gearboxes
- Other Products