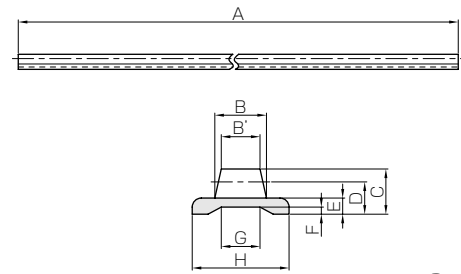




Specifications	
Precision grade	KHK R 001 grade 8
Gear teeth	Standard full depth
Pressure angle	20°
Material	Duracon (M25-44)
Heat treatment	—
Tooth hardness	110 ~ 120HRR



R4

Catalog No.	Module	Shape	Total length	Face width	Face width	Height	Height to pitch line	Thickness of base	Depth of groove	Width of groove	Width of base
			A	B	B'	C	D	E	F	G	H
<b>DR0.8-2000</b>	<b>m0.8</b>	R4	2000	3.8	3	3.3	2.5	1.5	0.7	3.7	8
<b>DR1-2000</b>	<b>m1</b>	R4	2000	5	4	4.3	3.3	2	0.9	4.9	10
<b>DR1.5-2000</b>	<b>m1.5</b>	R4	2000	6.5	5	5.7	4.2	2.3	1	8	12
<b>DR2-2000</b>	<b>m2</b>	R4	2000	8	6	7	5	2.5	1.1	10.1	15

[Caution on Product Characteristics]

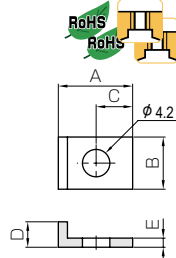
- ① The allowable forces shown in the table are the calculated values according to the assumed usage conditions. Please see page 373 for more details.
- ② To use the molded flexible rack with a 20 tooth pinion, the radius of curvature for an external or internal arc must be greater than 150 mm.
- ③ Molded Flexible Racks are not suitable for use when positioning accuracy is required.
- ④ To find the dimensional tolerance of these racks, please see the Dimensional Tolerance Table. The overall length tolerance is  $\pm 10$  mm.

### Products for DR SRS

## Rack Clamps



When fixed



### Rack Clamps Material: SS400 (Unichromic Plating)

Catalog No.	Shape	A	B	C	D	E	F	Weight (g)
<b>SRS-1</b>	T7	10.2	8	4.5	2.7	1.2	—	2.24
<b>SRS-2</b>	T7	11.4	8	5.6	3.9	1.4	—	2.52

[Caution on Product Characteristics]

- ① Cross-recessed machine head screw (M4 × 12) is included as an accessory.

### Dimensional Tolerance Table (unit: mm)

Range	Tolerance
below 3 mm	$\pm 0.20$
3 up to 6 mm	$\pm 0.25$
6 up to 10 mm	$\pm 0.30$
10 up to 18 mm	$\pm 0.35$
18 up to 30 mm	$\pm 0.40$
30 mm up	$\pm 0.50$

### Normal Bending and Dimensional Tolerance Table (unit: mm)

Range	Tolerance
below 6 mm	$\pm 0.30$
6 up to 30 mm	$\pm 0.50$
30 up to 120 mm	$\pm 0.80$
120 up to 400 mm	$\pm 1.20$
400 up to 1000 mm	$\pm 2.00$
1000 up to 2000 mm	$\pm 3.00$

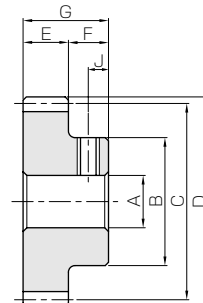


# SSDR DR Rack Pinions



Specifications	
Precision grade	JIS grade N8 (JIS B1702-1: 1998) * JIS grade 4 (JIS B1702: 1976)
Gear teeth	Standard full depth
Pressure angle	20°
Material	S45C
Heat treatment	—
Tooth hardness	less than 194HB

\* The precision grade of products with a module of less than 0.8 is equivalent to the value shown in the table.



S1T

Catalog No.	Module	No. of teeth	Shape	Bore	Hub dia.	Pitch dia.	Outside dia.	Face width	Hub width	Total length	Set Screw	
				A <sub>H7</sub>	B	C	D	E	F	G	Size	J
<b>SSDR0.8-35</b>	<b>m0.8</b>	35	S1T	5	16	28	29.6	3	7	10	M4	3.5
<b>SSDR1-30</b>	<b>m1</b>	30	S1T	6	20	30	32	4	8	12	M4	4
<b>SSDR1.5-20</b>	<b>m1.5</b>	20	S1T	6	20	30	33	5	10	15	M4	5
<b>SSDR2-15</b>	<b>m2</b>	15	S1T	8	22	30	34	6	10	16	M5	5

[Caution on Product Characteristics]

- ① For products with a tapped hole, a set screw is included.
- ② The allowable torque shown in the table are calculated values according to the assumed usage conditions. Please see page 373 (NOTE 4) for more details.

## Products for DR Molded Flexible Racks

Molded Flexible Racks	Rack Clamps	Rack Guide Rails	DR Rack Pinions
<b>DR0.8-2000</b>	<b>SRS-1</b>	<b>ARL-0.8</b>	<b>SSDR0.8-35</b>
<b>DR1-2000</b>	<b>SRS-1</b>	<b>ARL-1</b>	<b>SSDR1-30</b>
<b>DR1.5-2000</b>	<b>SRS-2</b>	<b>ARL-1.5</b>	<b>SSDR1.5-20</b>
<b>DR2-2000</b>	<b>SRS-2</b>	<b>ARL-2</b>	<b>SSDR2-15</b>

\* We also accept special orders for longer racks over 2 m.

Allowable force (N)	Allowable force (kgf)	Weight (kg)	Catalog No.
Bending strength	Bending strength		
112	11.4	0.036	<b>DR0.8-2000</b>
161	16.4	0.060	<b>DR1-2000</b>
161	16.5	0.085	<b>DR1.5-2000</b>
265	27.0	0.12	<b>DR2-2000</b>

## DR Molded Flexible Rack Applications

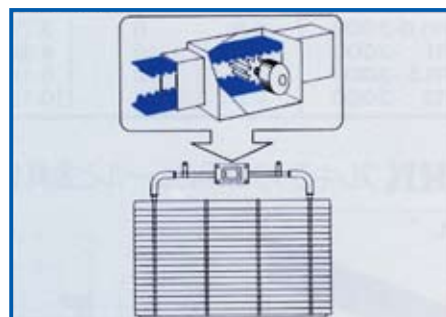
By fastening the positions of the pinions and adjusting the shape freely, DS Molded Flexible Racks can be used for various uses.



Motor Drive Curtain



Double Window with a built-in Blind

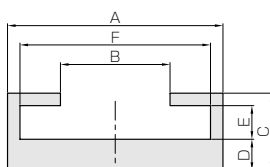


Motor Drive Antenna



Automatic Door

## Products for DR ARL Rack Guide Rails



T6

■ Rack Guide Rails Material: Aluminum (A6063S-T5) Total Length : 1000 mm

Catalog No.	Shape	A	B	C	D	E	F	Weight (kg)
<b>ARL-0.8</b>	T6	10.3	4.4	4.7	2	1.7	8.3	0.081
<b>ARL-1</b>	T6	12.3	5.6	5.2	2	2.2	10.3	0.096
<b>ARL-1.5</b>	T6	14.3	7.2	5.5	2	2.5	12.3	0.11
<b>ARL-2</b>	T6	17.3	8.8	6.2	2.5	2.7	15.3	0.15

## Steel Spur Gears

Allowable torque (N-m)	Allowable torque (kgf-m)	Weight (g)	Catalog No.
Bending strength	Bending strength		
2.59	0.26	23.5	<b>SSDR0.8-35</b>
4.46	0.45	38.6	<b>SSDR1-30</b>
7.35	0.75	48.4	<b>SSDR1.5-20</b>
10.4	1.06	56.1	<b>SSDR2-15</b>

[Caution on Secondary Operations]

① Please read "Caution on Performing Secondary Operations" (Page 36) when performing modifications and/or secondary operations for safety concerns. Haguruma Kobo, the KHK's system for quick modification of KHK stock gears is also available.