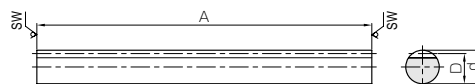




**Newly added**



Specifications	
Precision grade	KHK R 001 grade 5
Gear teeth	Standard full depth
Pressure angle	20°
Material	SUS303
Heat treatment	—
Tooth hardness	less than 187HB



\* SW Saw Blade Finished

**R2**

Catalog No. <small>New items indicated in blue letters.</small>	Module	Effective no. of teeth	Shape	Total length	Outside dia.	Height to pitch line	Allowable force (N)		Allowable force (kgf)		Weight (kg)
				A	$d_{hg}$	D	Bending strength	Surface durability	Bending strength	Surface durability	
<b>SURO1-500</b>	<b>m1</b>	159	R2	505	10	9	382	67.9	39.0	6.93	0.29
<b>SURO1.5-500</b>	<b>m1.5</b>	105	R2	505	15	13.5	859	162	87.6	16.5	0.65
<b>SURO2-500</b> <b>SURO2-1000</b>	<b>m2</b>	79 159	R2	505 1010	20	18	1530	298	156	30.4	1.15 2.30
<b>SURO2.5-500</b> <b>SURO2.5-1000</b>	<b>m2.5</b>	63 127	R2	505 1010	25	22.5	2390	477	243	48.7	1.79 3.59
<b>SURO3-500</b> <b>SURO3-1000</b>	<b>m3</b>	52 105	R2	505 1010	30	27	3440	700	351	71.4	2.58 5.17

[Caution on Product Characteristics]

- ① The allowable forces shown in the table are the calculated values according to the assumed usage conditions. Please see page 373 for more details.
- ② The backlash of racks differ depending on the size of the mating pinion. Please calculate the backlash from the backlash value of the mating pinion. Also, please refer to the data in the section called 'Backlash of Rack Tooth (Amount of Tooth Thinning)' on Page 375.

[Caution on Secondary Operations]

- ① Please read "Caution on Performing Secondary Operations" (Page 376) when performing modifications and/or secondary operations for safety concerns. Haguruma Kobo, the KHK's system for quick modification of KHK stock gears is also available.

Spur Gears

Helical Gears

Internal Gears

Racks

CP Racks & Pinions

Miter Gears

Bevel Gears

Screw Gears

Worm Gear Pair

Bevel Gearboxes

Other Products