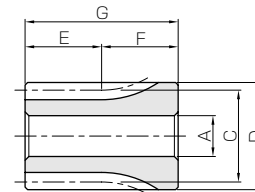




Specifications	
Precision grade	JIS grade N8 (JIS B1702-1: 1998) * JIS grade 4 (JIS B1702: 1976)
Gear teeth	Standard full depth
Pressure angle	20°
Material	SUS303
Heat treatment	—
Tooth hardness	less than 187HB



* The precision grade of J Series products is equivalent to the value shown in the table.

S3

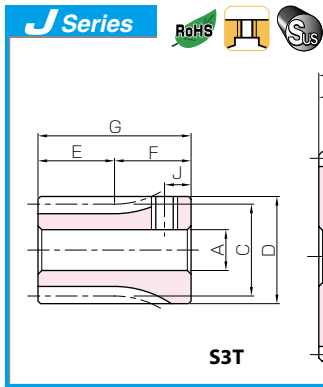
Catalog No. ● : J Series (Available-on-request)	Module	No. of teeth	Shape	Bore	Hub dia.	Pitch dia.	Outside dia.	Face width	Hub width	Total length	Keyway
				A _{H7}	B	C	D	E	F	G	Width×Depth
SUS1-15 ● SUS1-15J8	m1	15	S3 S3T	8 8	17	15	17	10	20	30	— —
SUS1-16 ● SUS1-16J8		16	S3 S3T	8 8	18	16	18	10	20	30	— —
SUS1-18 ● SUS1-18J8		18	S3 S3T	8 8	20	18	20	10	20	30	— —
SUS1-20 ● SUS1-20J8		20	S1 S1T	8 8	16	20	22	10	10	20	— —
SUS1-22 ● SUS1-22J8		22	S1 S1T	8 8	18	22	24	10	10	20	— —
SUS1-24 ● SUS1-24J8		24	S1 S1T	8 8	20	24	26	10	10	20	— —
SUS1-25 ● SUS1-25J8		25	S1 S1T	8 8	20	25	27	10	10	20	— —
SUS1-28 ● SUS1-28J8 ● SUS1-28J10 ● SUS1-28J12		28	S1 S1T S1K S1K	8 8 10 12	23	28	30	10	10	20	— — 4 x 1.8 4 x 1.8
SUS1-30 ● SUS1-30J8 ● SUS1-30J10 ● SUS1-30J12		30	S1 S1T S1K S1K	8 8 10 12	25	30	32	10	10	20	— — 4 x 1.8 4 x 1.8
SUS1-32 ● SUS1-32J8 ● SUS1-32J10 ● SUS1-32J12 ● SUS1-32J14		32	S1 S1T S1K S1K S1K	8 8 10 12 14	26	32	34	10	10	20	— — 4 x 1.8 4 x 1.8 5 x 2.3
SUS1-35 ● SUS1-35J8 ● SUS1-35J10 ● SUS1-35J12 ● SUS1-35J14		35	S1 S1T S1K S1K S1K	8 8 10 12 14	26	35	37	10	10	20	— — 4 x 1.8 4 x 1.8 5 x 2.3
SUS1-36 ● SUS1-36J8 ● SUS1-36J10 ● SUS1-36J12 ● SUS1-36J14 ● SUS1-36J15 ● SUS1-36J16		36	S1 S1T S1K S1K S1K S1K S1K	8 8 10 12 14 15 16	28	36	38	10	10	20	— — 4 x 1.8 4 x 1.8 5 x 2.3 5 x 2.3 5 x 2.3
SUS1-40 ● SUS1-40J10 ● SUS1-40J12 ● SUS1-40J14 ● SUS1-40J15 ● SUS1-40J16 ● SUS1-40J18 ● SUS1-40J19 ● SUS1-40J20		40	S1 S1K S1K S1K S1K S1K S1K S1K S1K	10 10 12 14 15 16 18 19 20	35	40	42	10	10	20	— — 4 x 1.8 4 x 1.8 5 x 2.3 5 x 2.3 5 x 2.3 6 x 2.8 6 x 2.8 6 x 2.8
SUS1-42 ● SUS1-42J10 ● SUS1-42J12 ● SUS1-42J14 ● SUS1-42J15 ● SUS1-42J16 ● SUS1-42J18 ● SUS1-42J19 ● SUS1-42J20		42	S1 S1K S1K S1K S1K S1K S1K S1K S1K	10 10 12 14 15 16 18 19 20	35	42	44	10	10	20	— — 4 x 1.8 4 x 1.8 5 x 2.3 5 x 2.3 5 x 2.3 6 x 2.8 6 x 2.8 6 x 2.8

[Caution on Product Characteristics]

- ① The allowable torques shown in the table are calculated values according to the assumed usage conditions. Please see page 35 for more details.
- ② The backlash values shown in the table are the theoretical values for the backlash in the normal direction of a pair of identical gears in mesh.

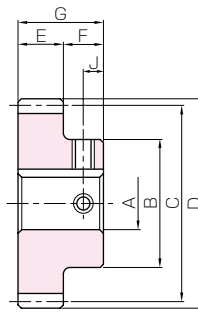
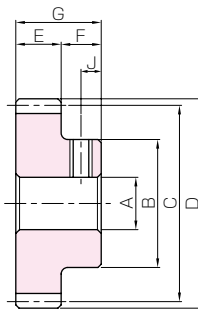
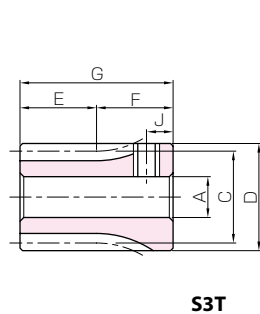
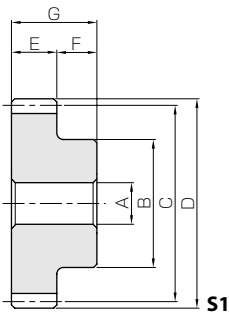
[Caution on Secondary Operations]

- ① Please read "Caution on Performing Secondary Operations" (Page 36) when performing modifications and/or secondary operations for safety concerns. Haguruma Kobo, the KHK's system for quick modification of KHK stock gears is also available.
- ② Avoid performing secondary operations that narrow the tooth width as it affects precision and strength.



Stainless Steel Spur Gears

Newly added



Set Screw		Allowable torque (N·m)		Allowable torque (kgf·m)		Backlash (mm)	Weight (kg)	Catalog No. ● : J Series (Available-on-request)
Size	J	Bending strength	Surface durability	Bending strength	Surface durability			
—	—	2.04	0.12	0.21	0.013	0.08~0.18	0.037 0.037	SUS1-15 ● SUS1-15J8
M5	5	2.26	0.14	0.23	0.015	0.08~0.18	0.044 0.043	SUS1-16 ● SUS1-16J8
—	—	2.71	0.18	0.28	0.019	0.08~0.18	0.057 0.056	SUS1-18 ● SUS1-18J8
M5	5	3.18	0.23	0.32	0.024	0.08~0.18	0.032 0.032	SUS1-20 ● SUS1-20J8
—	—	3.65	0.29	0.37	0.029	0.08~0.18	0.042 0.041	SUS1-22 ● SUS1-22J8
M5	5	4.13	0.35	0.42	0.036	0.08~0.18	0.052 0.051	SUS1-24 ● SUS1-24J8
—	—	4.37	0.38	0.45	0.039	0.08~0.18	0.055 0.054	SUS1-25 ● SUS1-25J8
—	—	5.11	0.48	0.52	0.049	0.08~0.18	0.073	SUS1-28
M5	5						0.071	● SUS1-28J8
M4	5						0.066	● SUS1-28J10
M4	5						0.061	● SUS1-28J12
—	—	5.6	0.56	0.57	0.057	0.08~0.18	0.086	SUS1-30
M5	5						0.084	● SUS1-30J8
M4	5						0.079	● SUS1-30J10
M4	5						0.073	● SUS1-30J12
—	—	6.11	0.64	0.62	0.066	0.08~0.18	0.096	SUS1-32
M5	5						0.095	● SUS1-32J8
M4	5						0.089	● SUS1-32J10
M4	5						0.084	● SUS1-32J12
M4	5						0.077	● SUS1-32J14
—	—	6.87	0.78	0.70	0.079	0.08~0.18	0.11	SUS1-35
M5	5						0.11	● SUS1-35J8
M4	5						0.10	● SUS1-35J10
M4	5						0.096	● SUS1-35J12
M4	5						0.089	● SUS1-35J14
—	—	7.12	0.82	0.73	0.084	0.08~0.18	0.12	SUS1-36
M5	5						0.12	● SUS1-36J8
M4	5						0.11	● SUS1-36J10
M4	5						0.11	● SUS1-36J12
M4	5						0.10	● SUS1-36J14
M4	5						0.097	● SUS1-36J15
M4	5	0.093	● SUS1-36J16					
—	—	8.15	1.03	0.83	0.11	0.08~0.18	0.16	SUS1-40
M4	5						0.16	● SUS1-40J10
M4	5						0.15	● SUS1-40J12
M4	5						0.15	● SUS1-40J14
M4	5						0.14	● SUS1-40J15
M4	5						0.14	● SUS1-40J16
M5	5						0.13	● SUS1-40J18
M5	5						0.12	● SUS1-40J19
M5	5	0.12	● SUS1-40J20					
—	—	8.66	1.14	0.88	0.12	0.08~0.18	0.17	SUS1-42
M4	5						0.17	● SUS1-42J10
M4	5						0.16	● SUS1-42J12
M4	5						0.16	● SUS1-42J14
M4	5						0.15	● SUS1-42J15
M4	5						0.15	● SUS1-42J16
M5	5						0.14	● SUS1-42J18
M5	5						0.13	● SUS1-42J19
M5	5	0.13	● SUS1-42J20					

[Caution on J series]

- ① As available-on-request products, requires a lead-time for shipping within 3 working-days (excludes the day ordered), after placing an order. Please allow additional shipping time to get to your local distributor.
- ② Number of products we can process for one order is 1 to 20 units. For quantities of 21 or more pieces, we need to quote price and lead time.
- ③ Keyways are made according to JIS B1301 standards, Js 9 tolerance.
- ④ Certain products which would otherwise have a very long tapped hole are conterbored to reduce the length of the tap. (Products marked with " * " are tap size).
- ⑤ For products having a tapped hole, a set screw is included.

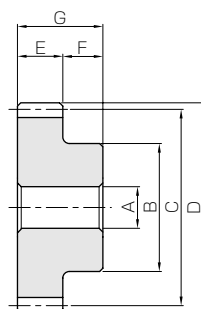


SUS Stainless Steel Spur Gears



Specifications	
Precision grade	JIS grade N8 (JIS B1702-1: 1998) * JIS grade 4 (JIS B1702: 1976)
Gear teeth	Standard full depth
Pressure angle	20°
Material	SUS303
Heat treatment	—
Tooth hardness	less than 187HB

* The precision grade of J Series products is equivalent to the value shown in the table.

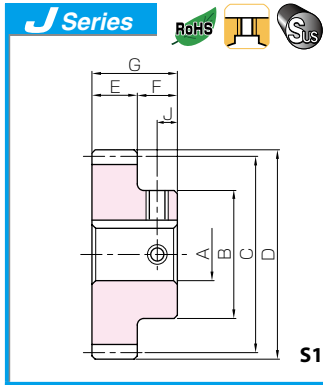


S1

Catalog No. ● : J Series (Available-on-request)	Module	No. of teeth	Shape	Bore	Hub dia.	Pitch dia.	Outside dia.	Face width	Hub width	Total length	Keyway
				A _{H7}	B	C	D	E	F	G	Width×Depth
SUS1-45 ● SUS1-45J10 ● SUS1-45J12 ● SUS1-45J14 ● SUS1-45J15 ● SUS1-45J16 ● SUS1-45J18 ● SUS1-45J19 ● SUS1-45J20	m1	45	S1	10	35	45	47	10	10	20	—
			S1K	10							4 × 1.8
			S1K	12							4 × 1.8
			S1K	14							5 × 2.3
			S1K	15							5 × 2.3
			S1K	16							5 × 2.3
			S1K	18							6 × 2.8
			S1K	19							6 × 2.8
			S1K	20							6 × 2.8
			SUS1-48 ● SUS1-48J10 ● SUS1-48J12 ● SUS1-48J14 ● SUS1-48J15 ● SUS1-48J16 ● SUS1-48J18 ● SUS1-48J19 ● SUS1-48J20	m1							48
S1K	10	4 × 1.8									
S1K	12	4 × 1.8									
S1K	14	5 × 2.3									
S1K	15	5 × 2.3									
S1K	16	5 × 2.3									
S1K	18	6 × 2.8									
S1K	19	6 × 2.8									
S1K	20	6 × 2.8									
SUS1-50 ● SUS1-50J10 ● SUS1-50J12 ● SUS1-50J14 ● SUS1-50J15 ● SUS1-50J16 ● SUS1-50J18 ● SUS1-50J19 ● SUS1-50J20	m1	50			S1	10	35	50	52	10	
			S1K	10	4 × 1.8						
			S1K	12	4 × 1.8						
			S1K	14	5 × 2.3						
			S1K	15	5 × 2.3						
			S1K	16	5 × 2.3						
			S1K	18	6 × 2.8						
			S1K	19	6 × 2.8						
			S1K	20	6 × 2.8						
			SUS1-55 ● SUS1-55J10 ● SUS1-55J12 ● SUS1-55J14 ● SUS1-55J15 ● SUS1-55J16 ● SUS1-55J18 ● SUS1-55J19 ● SUS1-55J20 ● SUS1-55J22	m1	55	S1					10
S1K	10	4 × 1.8									
S1K	12	4 × 1.8									
S1K	14	5 × 2.3									
S1K	15	5 × 2.3									
S1K	16	5 × 2.3									
S1K	18	6 × 2.8									
S1K	19	6 × 2.8									
S1K	20	6 × 2.8									
S1K	22	6 × 2.8									
SUS1-56 ● SUS1-56J10 ● SUS1-56J12 ● SUS1-56J14 ● SUS1-56J15 ● SUS1-56J16 ● SUS1-56J18 ● SUS1-56J19 ● SUS1-56J20 ● SUS1-56J22	m1	56	S1	10	40	56	58	10	10	20	—
			S1K	10							4 × 1.8
			S1K	12							4 × 1.8
			S1K	14							5 × 2.3
			S1K	15							5 × 2.3
			S1K	16							5 × 2.3
			S1K	18							6 × 2.8
			S1K	19							6 × 2.8
			S1K	20							6 × 2.8
			S1K	22							6 × 2.8
SUS1-60 ● SUS1-60J10 ● SUS1-60J12 ● SUS1-60J14 ● SUS1-60J15 ● SUS1-60J16 ● SUS1-60J18 ● SUS1-60J19 ● SUS1-60J20 ● SUS1-60J22	m1	60	S1	10	40	60	62	10	10	20	—
			S1K	10							4 × 1.8
			S1K	12							4 × 1.8
			S1K	14							5 × 2.3
			S1K	15							5 × 2.3
			S1K	16							5 × 2.3
			S1K	18							6 × 2.8
			S1K	19							6 × 2.8
			S1K	20							6 × 2.8
			S1K	22							6 × 2.8

[Caution on Product Characteristics] ① The allowable torques shown in the table are calculated values according to the assumed usage conditions. Please see page 35 for more details.
② The backlash values shown in the table are the theoretical values for the backlash in the normal direction of a pair of identical gears in mesh.

[Caution on Secondary Operations] ① Please read “Caution on Performing Secondary Operations” (Page 36) when performing modifications and/or secondary operations for safety concerns. Haguruma Kobo, the KHK’s system for quick modification of KHK stock gears is also available.
② Avoid performing secondary operations that narrow the tooth width as it affects precision and strength.



Stainless Steel Spur Gears

Newly added



Spur Gears

Helical Gears

Internal Gears

Racks

CP Racks & Pinions

Miter Gears

Bevel Gears

Screw Gears

Worm Gear Pair

Bevel Gearboxes

Other Products

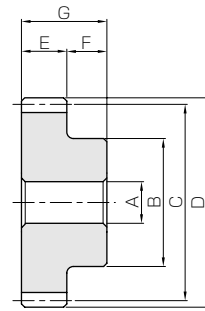
Set Screw		Allowable torque (N·m)		Allowable torque (kgf·m)		Backlash (mm)	Weight (kg)	Catalog No. ● : J Series (Available-on-request)
Size	J	Bending strength	Surface durability	Bending strength	Surface durability			
—	—	9.44	1.32	0.96	0.13	0.08~0.18	0.19	SUS1-45
M4	5							●SUS1-45J10
M4	5							●SUS1-45J12
M4	5							●SUS1-45J14
M4	5							●SUS1-45J15
M4	5							●SUS1-45J16
M5	5							●SUS1-45J18
M5	5							●SUS1-45J19
M5	5	●SUS1-45J20						
—	—	10.2	1.51	1.04	0.15	0.08~0.18	0.20	SUS1-48
M4	5							●SUS1-48J10
M4	5							●SUS1-48J12
M4	5							●SUS1-48J14
M4	5							●SUS1-48J15
M4	5							●SUS1-48J16
M5	5							●SUS1-48J18
M5	5							●SUS1-48J19
M5	5	●SUS1-48J20						
—	—	10.8	1.65	1.10	0.17	0.08~0.18	0.22	SUS1-50
M4	5							●SUS1-50J10
M4	5							●SUS1-50J12
M4	5							●SUS1-50J14
M4	5							●SUS1-50J15
M4	5							●SUS1-50J16
M5	5							●SUS1-50J18
M5	5							●SUS1-50J19
M5	5	●SUS1-50J20						
—	—	12.1	2.01	1.23	0.21	0.08~0.18	0.27	SUS1-55
M4*	5							●SUS1-55J10
M4	5							●SUS1-55J12
M4	5							●SUS1-55J14
M4	5							●SUS1-55J15
M4	5							●SUS1-55J16
M5	5							●SUS1-55J18
M5	5							●SUS1-55J19
M5	5	●SUS1-55J20						
M5	5	●SUS1-55J22						
—	—	12.3	2.09	1.26	0.21	0.08~0.18	0.28	SUS1-56
M4*	5							●SUS1-56J10
M4	5							●SUS1-56J12
M4	5							●SUS1-56J14
M4	5							●SUS1-56J15
M4	5							●SUS1-56J16
M5	5							●SUS1-56J18
M5	5							●SUS1-56J19
M5	5	●SUS1-56J20						
M5	5	●SUS1-56J22						
—	—	13.4	2.42	1.37	0.25	0.08~0.18	0.31	SUS1-60
M4*	5							●SUS1-60J10
M4	5							●SUS1-60J12
M4	5							●SUS1-60J14
M4	5							●SUS1-60J15
M4	5							●SUS1-60J16
M5	5							●SUS1-60J18
M5	5							●SUS1-60J19
M5	5	●SUS1-60J20						
M5	5	●SUS1-60J22						

- [Caution on J series]
- ① As available-on-request products, requires a lead-time for shipping within 3 working-days (excludes the day ordered), after placing an order. Please allow additional shipping time to get to your local distributor.
 - ② Number of products we can process for one order is 1 to 20 units. For quantities of 21 or more pieces, we need to quote price and lead time.
 - ③ Keyways are made according to JIS B1301 standards, Js 9 tolerance.
 - ④ Certain products which would otherwise have a very long tapped hole are conterbored to reduce the length of the tap. (Products marked with "*" are tap size).
 - ⑤ For products having a tapped hole, a set screw is included.



Specifications	
Precision grade	JIS grade N8 (JIS B1702-1: 1998) * JIS grade 4 (JIS B1702: 1976)
Gear teeth	Standard full depth
Pressure angle	20°
Material	SUS303
Heat treatment	—
Tooth hardness	less than 187HB

* The precision grade of J Series products is equivalent to the value shown in the table.



S1

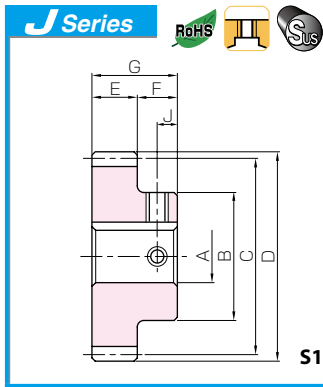
Catalog No. ● : J Series (Available-on-request)	Module	No. of teeth	Shape	Bore	Hub dia.	Pitch dia.	Outside dia.	Face width	Hub width	Total length	Keyway									
				A _{H7}	B	C	D	E	F	G	Width×Depth									
SUS1-64 ● SUS1-64J10 ● SUS1-64J12 ● SUS1-64J14 ● SUS1-64J15 ● SUS1-64J16 ● SUS1-64J18 ● SUS1-64J19 ● SUS1-64J20 ● SUS1-64J22 ● SUS1-64J25	m1	64	S1	10	45	64	66	10	10	20	—									
			S1K	10							4 × 1.8									
			S1K	12							4 × 1.8									
			S1K	14							5 × 2.3									
			S1K	15							5 × 2.3									
			S1K	16							5 × 2.3									
			S1K	18							6 × 2.8									
			S1K	19							6 × 2.8									
			S1K	20							6 × 2.8									
			S1K	22							6 × 2.8									
			S1K	25							8 × 3.3									
			SUS1-70 ● SUS1-70J10 ● SUS1-70J12 ● SUS1-70J14 ● SUS1-70J15 ● SUS1-70J16 ● SUS1-70J18 ● SUS1-70J19 ● SUS1-70J20 ● SUS1-70J22 ● SUS1-70J25 ● SUS1-70J28 ● SUS1-70J30	m1							70	S1	10	50	70	72	10	10	20	—
												S1K	10							4 × 1.8
S1K	12	4 × 1.8																		
S1K	14	5 × 2.3																		
S1K	15	5 × 2.3																		
S1K	16	5 × 2.3																		
S1K	18	6 × 2.8																		
S1K	19	6 × 2.8																		
S1K	20	6 × 2.8																		
S1K	22	6 × 2.8																		
S1K	25	8 × 3.3																		
S1K	28	8 × 3.3																		
S1K	30	8 × 3.3																		
SUS1-75 ● SUS1-75J10 ● SUS1-75J12 ● SUS1-75J14 ● SUS1-75J15 ● SUS1-75J16 ● SUS1-75J18 ● SUS1-75J19 ● SUS1-75J20 ● SUS1-75J22 ● SUS1-75J25 ● SUS1-75J28 ● SUS1-75J30 ● SUS1-75J32	m1	75	S1	10	55	75	77	10	10	20	—									
			S1K	10							4 × 1.8									
			S1K	12							4 × 1.8									
			S1K	14							5 × 2.3									
			S1K	15							5 × 2.3									
			S1K	16							5 × 2.3									
			S1K	18							6 × 2.8									
			S1K	19							6 × 2.8									
			S1K	20							6 × 2.8									
			S1K	22							6 × 2.8									
			S1K	25							8 × 3.3									
			S1K	28							8 × 3.3									
			S1K	30							8 × 3.3									
S1K	32	10 × 3.3																		
SUS1-80 ● SUS1-80J10 ● SUS1-80J12 ● SUS1-80J14 ● SUS1-80J15 ● SUS1-80J16 ● SUS1-80J18 ● SUS1-80J19 ● SUS1-80J20 ● SUS1-80J22 ● SUS1-80J25 ● SUS1-80J28 ● SUS1-80J30 ● SUS1-80J32 ● SUS1-80J35	m1	80	S1	10	60	80	82	10	10	20	—									
			S1K	10							4 × 1.8									
			S1K	12							4 × 1.8									
			S1K	14							5 × 2.3									
			S1K	15							5 × 2.3									
			S1K	16							5 × 2.3									
			S1K	18							6 × 2.8									
			S1K	19							6 × 2.8									
			S1K	20							6 × 2.8									
			S1K	22							6 × 2.8									
			S1K	25							8 × 3.3									
			S1K	28							8 × 3.3									
			S1K	30							8 × 3.3									
S1K	32	10 × 3.3																		
S1K	35	10 × 3.3																		

[Caution on Product Characteristics]

- ① The allowable torques shown in the table are calculated values according to the assumed usage conditions. Please see page 35 for more details.
- ② The backlash values shown in the table are the theoretical values for the backlash in the normal direction of a pair of identical gears in mesh.

[Caution on Secondary Operations]

- ① Please read "Caution on Performing Secondary Operations" (Page 36) when performing modifications and/or secondary operations for safety concerns. Haguruma Kobo, the KHK's system for quick modification of KHK stock gears is also available.
- ② Avoid performing secondary operations that narrow the tooth width as it affects precision and strength.



Stainless Steel Spur Gears

Newly added



Spur Gears

Helical Gears

Internal Gears

Racks

CP Racks & Pinions

Miter Gears

Bevel Gears

Screw Gears

Worm Gear Pair

Bevel Gearboxes

Other Products

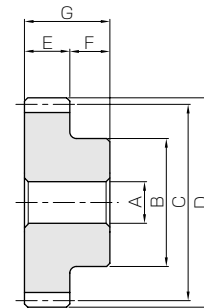
Set Screw		Allowable torque (N·m)		Allowable torque (kgf·m)		Backlash (mm)	Weight (kg)	Catalog No. ● : J Series (Available-on-request)
Size	J	Bending strength	Surface durability	Bending strength	Surface durability			
—	—	14.5	2.77	1.47	0.28	0.08~0.18	0.36	SUS1-64
M4*	5							●SUS1-64J10
M4*	5							●SUS1-64J12
M4*	5							●SUS1-64J14
M4*	5							●SUS1-64J15
M4*	5							●SUS1-64J16
M5	5							●SUS1-64J18
M5	5							●SUS1-64J19
M5	5							●SUS1-64J20
M5	5							●SUS1-64J22
M6	5							●SUS1-64J25
M6	5							●SUS1-64J29
—	—	16.1	3.34	1.64	0.34	0.08~0.18	0.44	SUS1-70
M4*	5							●SUS1-70J10
M4*	5							●SUS1-70J12
M4*	5							●SUS1-70J14
M4*	5							●SUS1-70J15
M4*	5							●SUS1-70J16
M5	5							●SUS1-70J18
M5	5							●SUS1-70J19
M5	5							●SUS1-70J20
M5	5							●SUS1-70J22
M6	5							●SUS1-70J25
M6	5							●SUS1-70J28
M6	5	●SUS1-70J30						
—	—	17.4	3.86	1.77	0.39	0.08~0.18	0.52	SUS1-75
M4*	5							●SUS1-75J10
M4*	5							●SUS1-75J12
M4*	5							●SUS1-75J14
M4*	5							●SUS1-75J15
M4*	5							●SUS1-75J16
M5*	5							●SUS1-75J18
M5*	5							●SUS1-75J19
M5*	5							●SUS1-75J20
M5	5							●SUS1-75J22
M6	5							●SUS1-75J25
M6	5							●SUS1-75J28
M6	5	●SUS1-75J30						
M8	5	●SUS1-75J32						
—	—	18.7	4.42	1.91	0.45	0.08~0.18	0.60	SUS1-80
M4*	5							●SUS1-80J10
M4*	5							●SUS1-80J12
M4*	5							●SUS1-80J14
M4*	5							●SUS1-80J15
M4*	5							●SUS1-80J16
M5*	5							●SUS1-80J18
M5*	5							●SUS1-80J19
M5*	5							●SUS1-80J20
M5*	5							●SUS1-80J22
M6	5							●SUS1-80J25
M6	5							●SUS1-80J28
M6	5	●SUS1-80J30						
M8	5	●SUS1-80J32						
M8	5	●SUS1-80J35						

- [Caution on J series]**
- ① As available-on-request products, requires a lead-time for shipping within 3 working-days (excludes the day ordered), after placing an order. Please allow additional shipping time to get to your local distributor.
 - ② Number of products we can process for one order is 1 to 20 units. For quantities of 21 or more pieces, we need to quote price and lead time.
 - ③ Keyways are made according to JIS B1301 standards, Js 9 tolerance.
 - ④ Certain products which would otherwise have a very long tapped hole are conterbored to reduce the length of the tap. (Products marked with "*" are tap size).
 - ⑤ For products having a tapped hole, a set screw is included.



Specifications	
Precision grade	JIS grade N8 (JIS B1702-1: 1998) * JIS grade 4 (JIS B1702: 1976)
Gear teeth	Standard full depth
Pressure angle	20°
Material	SUS303
Heat treatment	—
Tooth hardness	less than 187HB

* The precision grade of J Series products is equivalent to the value shown in the table.

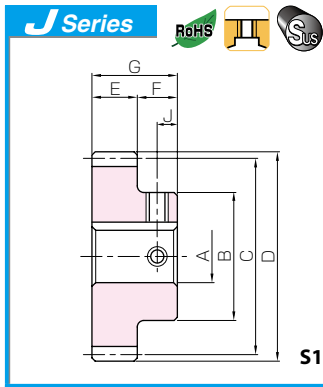


S1

Catalog No. ● : J Series (Available-on-request)	Module	No. of teeth	Shape	Bore	Hub dia.	Pitch dia.	Outside dia.	Face width	Hub width	Total length	Keyway
				A _{H7}	B	C	D	E	F	G	Width×Depth
SUS1-90 ● SUS1-90J10 ● SUS1-90J12 ● SUS1-90J14 ● SUS1-90J15 ● SUS1-90J16 ● SUS1-90J18 ● SUS1-90J19 ● SUS1-90J20 ● SUS1-90J22 ● SUS1-90J25 ● SUS1-90J28 ● SUS1-90J30 ● SUS1-90J32 ● SUS1-90J35	m1	90	S1	10	60	90	92	10	10	20	—
S1K			10	4 × 1.8							
S1K			12	4 × 1.8							
S1K	14		5 × 2.3								
S1K	15		5 × 2.3								
S1K	16		5 × 2.3								
S1K	18		6 × 2.8								
S1K	19		6 × 2.8								
S1K	20		6 × 2.8								
S1K	22		6 × 2.8								
S1K	25		8 × 3.3								
S1K	28		8 × 3.3								
S1K	30		8 × 3.3								
S1K	32		10 × 3.3								
S1K	35		10 × 3.3								
SUS1-100 ● SUS1-100J12 ● SUS1-100J14 ● SUS1-100J15 ● SUS1-100J16 ● SUS1-100J18 ● SUS1-100J19 ● SUS1-100J20 ● SUS1-100J22 ● SUS1-100J25 ● SUS1-100J28 ● SUS1-100J30 ● SUS1-100J32 ● SUS1-100J35	m1	100	S1	12	60	100	102	10	10	20	—
S1K			12	4 × 1.8							
S1K			14	5 × 2.3							
S1K	15		5 × 2.3								
S1K	16		5 × 2.3								
S1K	18		6 × 2.8								
S1K	19		6 × 2.8								
S1K	20		6 × 2.8								
S1K	22		6 × 2.8								
S1K	25		8 × 3.3								
S1K	28		8 × 3.3								
S1K	30		8 × 3.3								
S1K	32		10 × 3.3								
S1K	35		10 × 3.3								
SUS1-120 ● SUS1-120J12 ● SUS1-120J14 ● SUS1-120J15 ● SUS1-120J16 ● SUS1-120J18 ● SUS1-120J19 ● SUS1-120J20 ● SUS1-120J22 ● SUS1-120J25 ● SUS1-120J28 ● SUS1-120J30 ● SUS1-120J32 ● SUS1-120J35	m1		120	S1							12
S1K		12		4 × 1.8							
S1K		14		5 × 2.3							
S1K	15	5 × 2.3									
S1K	16	5 × 2.3									
S1K	18	6 × 2.8									
S1K	19	6 × 2.8									
S1K	20	6 × 2.8									
S1K	22	6 × 2.8									
S1K	25	8 × 3.3									
S1K	28	8 × 3.3									
S1K	30	8 × 3.3									
S1K	32	10 × 3.3									
S1K	35	10 × 3.3									

[Caution on Product Characteristics] ① The allowable torques shown in the table are calculated values according to the assumed usage conditions. Please see page 35 for more details.
② The backlash values shown in the table are the theoretical values for the backlash in the normal direction of a pair of identical gears in mesh.

[Caution on Secondary Operations] ① Please read "Caution on Performing Secondary Operations" (Page 36) when performing modifications and/or secondary operations for safety concerns. Haguruma Kobo, the KHK's system for quick modification of KHK stock gears is also available.
② Avoid performing secondary operations that narrow the tooth width as it affects precision and strength.



Stainless Steel Spur Gears

Newly added



Set Screw		Allowable torque (N·m)		Allowable torque (kgf·m)		Backlash (mm)	Weight (kg)	Catalog No. ● : J Series (Available-on-request)						
Size	J	Bending strength	Surface durability	Bending strength	Surface durability									
—	—	21.4	5.67	2.19	0.58	0.08~0.18	0.70	SUS1-90						
M4*	5							● SUS1-90J10						
M4*	5							● SUS1-90J12						
M4*	5							● SUS1-90J14						
M4*	5							● SUS1-90J15						
M4*	5							● SUS1-90J16						
M5*	5							● SUS1-90J18						
M5*	5							● SUS1-90J19						
M5*	5							● SUS1-90J20						
M5*	5							● SUS1-90J22						
M6	5							● SUS1-90J25						
M6	5							● SUS1-90J28						
M6	5							● SUS1-90J30						
M8	5							● SUS1-90J32						
M8	5							● SUS1-90J35						
—	—							24.1	7.08	2.46	0.72	0.08~0.18	0.82	SUS1-100
M4*	5													● SUS1-100J12
M4*	5													● SUS1-100J14
M4*	5	● SUS1-100J15												
M4*	5	● SUS1-100J16												
M5*	5	● SUS1-100J18												
M5*	5	● SUS1-100J19												
M5*	5	● SUS1-100J20												
M5*	5	● SUS1-100J22												
M6	5	● SUS1-100J25												
M6	5	● SUS1-100J28												
M6	5	● SUS1-100J30												
M8	5	● SUS1-100J32												
M8	5	● SUS1-100J35												
—	—	29.6	10.4	3.01	1.06	0.08~0.18	1.09							SUS1-120
M4*	5													● SUS1-120J12
M4*	5													● SUS1-120J14
M4*	5													● SUS1-120J15
M4*	5							● SUS1-120J16						
M5*	5							● SUS1-120J18						
M5*	5							● SUS1-120J19						
M5*	5							● SUS1-120J20						
M5*	5							● SUS1-120J22						
M6	5							● SUS1-120J25						
M6	5							● SUS1-120J28						
M6	5							● SUS1-120J30						
M8	5							● SUS1-120J32						
M8	5							● SUS1-120J35						

[Caution on J series]

- ① As available-on-request products, requires a lead-time for shipping within 3 working-days (excludes the day ordered), after placing an order. Please allow additional shipping time to get to your local distributor.
- ② Number of products we can process for one order is 1 to 20 units. For quantities of 21 or more pieces, we need to quote price and lead time.
- ③ Keyways are made according to JIS B1301 standards, Js 9 tolerance.
- ④ Certain products which would otherwise have a very long tapped hole are conterbored to reduce the length of the tap. (Products marked with "*" are tap size).
- ⑤ For products having a tapped hole, a set screw is included.

Spur Gears

Helical Gears

Internal Gears

Racks

CP Racks & Pinions

Miter Gears

Bevel Gears

Screw Gears

Worm Gear Pair

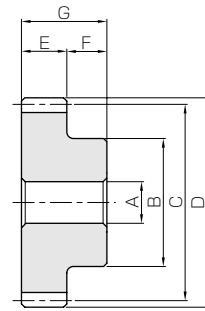
Bevel Gearboxes

Other Products



Specifications	
Precision grade	JIS grade N8 (JIS B1702-1: 1998) * JIS grade 4 (JIS B1702: 1976)
Gear teeth	Standard full depth
Pressure angle	20°
Material	SUS303
Heat treatment	—
Tooth hardness	less than 187HB

* The precision grade of J Series products is equivalent to the value shown in the table.



S1

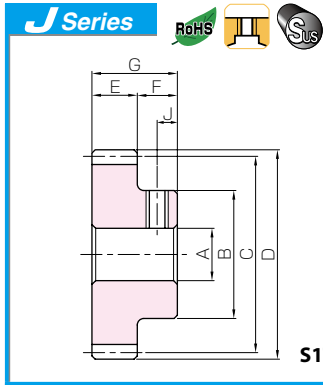
Catalog No. ● : J Series (Available-on-request)	Module	No. of teeth	Shape	Bore	Hub dia.	Pitch dia.	Outside dia.	Face width	Hub width	Total length	Keyway	
				A _{H7}	B	C	D	E	F	G	Width×Depth	
SUS1.5-15 ● SUS1.5-15J8	m1.5	15	S1	8	18	22.5	25.5	15	14	29	—	
			S1T	8							—	
		SUS1.5-16 ● SUS1.5-16J8	16	S1	8	20	24	27	15	14	29	—
				S1T	8							—
		SUS1.5-18 ● SUS1.5-18J8 ● SUS1.5-18J10	18	S1	8	22	27	30	15	14	29	—
				S1T	8							—
				S1K	10							4 x 1.8
		SUS1.5-20 ● SUS1.5-20J8 ● SUS1.5-20J10 ● SUS1.5-20J12	20	S1	8	24	30	33	15	14	29	—
				S1T	8							—
				S1K	10							4 x 1.8
				S1K	12							4 x 1.8
		SUS1.5-22 ● SUS1.5-22J8 ● SUS1.5-22J10 ● SUS1.5-22J12 ● SUS1.5-22J14	22	S1	8	26	33	36	15	14	29	—
S1T	8			—								
S1K	10			4 x 1.8								
S1K	12			4 x 1.8								
SUS1.5-24 ● SUS1.5-24J8 ● SUS1.5-24J10 ● SUS1.5-24J12 ● SUS1.5-24J14 ● SUS1.5-24J15 ● SUS1.5-24J16	24	S1	8	28	36	39	15	14	29	—		
		S1T	8							—		
		S1K	10							4 x 1.8		
		S1K	12							4 x 1.8		
SUS1.5-25 ● SUS1.5-25J8 ● SUS1.5-25J10 ● SUS1.5-25J12 ● SUS1.5-25J14 ● SUS1.5-25J15 ● SUS1.5-25J16	25	S1	8	30	37.5	40.5	15	14	29	—		
		S1T	8							—		
		S1K	10							4 x 1.8		
		S1K	12							4 x 1.8		
		S1K	14							5 x 2.3		
		S1K	15							5 x 2.3		
SUS1.5-28 ● SUS1.5-28J10 ● SUS1.5-28J12 ● SUS1.5-28J14 ● SUS1.5-28J15 ● SUS1.5-28J16 ● SUS1.5-28J18 ● SUS1.5-28J19 ● SUS1.5-28J20	28	S1	10	36	42	45	15	14	29	—		
		S1K	10							4 x 1.8		
		S1K	12							4 x 1.8		
		S1K	14							5 x 2.3		
		S1K	15							5 x 2.3		
		S1K	16							5 x 2.3		
		S1K	18							6 x 2.8		
		S1K	19							6 x 2.8		
S1K	20	6 x 2.8										
SUS1.5-30 ● SUS1.5-30J10 ● SUS1.5-30J12 ● SUS1.5-30J14 ● SUS1.5-30J15 ● SUS1.5-30J16 ● SUS1.5-30J18 ● SUS1.5-30J19 ● SUS1.5-30J20 ● SUS1.5-30J22	30	S1	10	38	45	48	15	14	29	—		
		S1K	10							4 x 1.8		
		S1K	12							4 x 1.8		
		S1K	14							5 x 2.3		
		S1K	15							5 x 2.3		
		S1K	16							5 x 2.3		
		S1K	18							6 x 2.8		
		S1K	19							6 x 2.8		
S1K	20	6 x 2.8										
SUS1.5-32 ● SUS1.5-32J10 ● SUS1.5-32J12 ● SUS1.5-32J14 ● SUS1.5-32J15 ● SUS1.5-32J16 ● SUS1.5-32J18 ● SUS1.5-32J19 ● SUS1.5-32J20 ● SUS1.5-32J22	32	S1	10	40	48	51	15	14	29	—		
		S1K	10							4 x 1.8		
		S1K	12							4 x 1.8		
		S1K	14							5 x 2.3		
		S1K	15							5 x 2.3		
		S1K	16							5 x 2.3		
		S1K	18							6 x 2.8		
		S1K	19							6 x 2.8		
S1K	20	6 x 2.8										
S1K	22	6 x 2.8										

[Caution on Product Characteristics]

- ① The allowable torques shown in the table are calculated values according to the assumed usage conditions. Please see page 35 for more details.
- ② The backlash values shown in the table are the theoretical values for the backlash in the normal direction of a pair of identical gears in mesh.

[Caution on Secondary Operations]

- ① Please read "Caution on Performing Secondary Operations" (Page 36) when performing modifications and/or secondary operations for safety concerns. Haguruma Kobo, the KHK's system for quick modification of KHK stock gears is also available.
- ② Avoid performing secondary operations that narrow the tooth width as it affects precision and strength.



Stainless Steel Spur Gears

Newly added



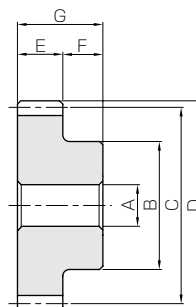
Set Screw		Allowable torque (N·m)		Allowable torque (kgf·m)		Backlash (mm)	Weight (kg)	Catalog No. ● : J Series (Available-on-request)
Size	J	Bending strength	Surface durability	Bending strength	Surface durability			
—	—	6.89	0.43	0.70	0.044	0.10~0.22	0.063 0.062	SUS1.5-15 ● SUS1.5-15J8
M5	7	7.63	0.50	0.78	0.051	0.10~0.22	0.076 0.075	SUS1.5-16 ● SUS1.5-16J8
—	—	9.16	0.65	0.93	0.066	0.10~0.22	0.097 0.096 0.088	SUS1.5-18 ● SUS1.5-18J8 ● SUS1.5-18J10
M5	7	10.7	0.82	1.09	0.084	0.10~0.22	0.12	SUS1.5-20 ● SUS1.5-20J8 ● SUS1.5-20J10 ● SUS1.5-20J12
M4	7						0.12	
M4	7						0.11	
M5	7	12.3	1.01	1.26	0.10	0.12~0.26	0.15	SUS1.5-22 ● SUS1.5-22J8 ● SUS1.5-22J10 ● SUS1.5-22J12 ● SUS1.5-22J14
M4	7						0.15	
M4	7						0.14	
M4	7						0.13	
M4	7						0.12	
—	—	13.9	1.23	1.42	0.13	0.12~0.26	0.17	SUS1.5-24 ● SUS1.5-24J8 ● SUS1.5-24J10 ● SUS1.5-24J12 ● SUS1.5-24J14 ● SUS1.5-24J15 ● SUS1.5-24J16
M5	7						0.17	
M4	7						0.17	
M4	7						0.17	
M4	7						0.16	
M4	7						0.15	
M4	7						0.14	
M4	7	0.14						
—	—	14.8	1.35	1.50	0.14	0.12~0.26	0.20	SUS1.5-25 ● SUS1.5-25J8 ● SUS1.5-25J10 ● SUS1.5-25J12 ● SUS1.5-25J14 ● SUS1.5-25J15 ● SUS1.5-25J16
M5	7						0.19	
M4	7						0.19	
M4	7						0.18	
M4	7						0.17	
M4	7						0.16	
M4	7						0.16	
—	—	17.2	1.71	1.76	0.17	0.12~0.26	0.26	SUS1.5-28 ● SUS1.5-28J10 ● SUS1.5-28J12 ● SUS1.5-28J14 ● SUS1.5-28J15 ● SUS1.5-28J16 ● SUS1.5-28J18 ● SUS1.5-28J19 ● SUS1.5-28J20
M4	7						0.25	
M4	7						0.24	
M4	7						0.23	
M4	7						0.23	
M4	7						0.23	
M4	7						0.22	
M5	7						0.21	
M5	7						0.20	
M5	7	0.20						
—	—	18.9	1.98	1.93	0.20	0.12~0.26	0.29	SUS1.5-30 ● SUS1.5-30J10 ● SUS1.5-30J12 ● SUS1.5-30J14 ● SUS1.5-30J15 ● SUS1.5-30J16 ● SUS1.5-30J18 ● SUS1.5-30J19 ● SUS1.5-30J20 ● SUS1.5-30J22
M4	7						0.29	
M4	7						0.28	
M4	7						0.27	
M4	7						0.27	
M4	7						0.27	
M4	7						0.26	
M5	7						0.25	
M5	7						0.24	
M5	7	0.23						
M5	7	0.22						
—	—	20.6	2.27	2.10	0.23	0.12~0.26	0.33	SUS1.5-32 ● SUS1.5-32J10 ● SUS1.5-32J12 ● SUS1.5-32J14 ● SUS1.5-32J15 ● SUS1.5-32J16 ● SUS1.5-32J18 ● SUS1.5-32J19 ● SUS1.5-32J20 ● SUS1.5-32J22
M4*	7						0.33	
M4	7						0.32	
M4	7						0.31	
M4	7						0.30	
M4	7						0.30	
M4	7						0.30	
M5	7						0.28	
M5	7						0.28	
M5	7						0.27	
M5	7	0.26						

- [Caution on J series]
- ① As available-on-request products, requires a lead-time for shipping within 3 working-days (excludes the day ordered), after placing an order. Please allow additional shipping time to get to your local distributor.
 - ② Number of products we can process for one order is 1 to 20 units. For quantities of 21 or more pieces, we need to quote price and lead time.
 - ③ Keyways are made according to JIS B1301 standards, Js 9 tolerance.
 - ④ Certain products which would otherwise have a very long tapped hole are conterbored to reduce the length of the tap. (Products marked with "*" are tap size).
 - ⑤ For products having a tapped hole, a set screw is included.



Specifications	
Precision grade	JIS grade N8 (JIS B1702-1: 1998) * JIS grade 4 (JIS B1702: 1976)
Gear teeth	Standard full depth
Pressure angle	20°
Material	SUS303
Heat treatment	—
Tooth hardness	less than 187HB

* The precision grade of J Series products is equivalent to the value shown in the table.



S1

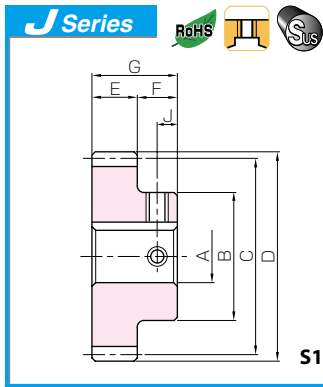
Catalog No. ● : J Series (Available-on-request)	Module	No. of teeth	Shape	Bore	Hub dia.	Pitch dia.	Outside dia.	Face width	Hub width	Total length	Keyway								
				A _{H7}	B	C	D	E	F	G	Width×Depth								
SUS1.5-35 ● SUS1.5-35J10 ● SUS1.5-35J12 ● SUS1.5-35J14 ● SUS1.5-35J15 ● SUS1.5-35J16 ● SUS1.5-35J18 ● SUS1.5-35J19 ● SUS1.5-35J20 ● SUS1.5-35J22 ● SUS1.5-35J25	m1.5	35	S1	10	42	52.5	55.5	15	14	29	—								
S1K			10	4 × 1.8															
S1K			12	4 × 1.8															
S1K			14	5 × 2.3															
S1K			15	5 × 2.3															
S1K			16	5 × 2.3															
S1K			18	6 × 2.8															
S1K			19	6 × 2.8															
S1K			20	6 × 2.8															
S1K			22	6 × 2.8															
S1K			25	8 × 3.3															
SUS1.5-36 ● SUS1.5-36J10 ● SUS1.5-36J12 ● SUS1.5-36J14 ● SUS1.5-36J15 ● SUS1.5-36J16 ● SUS1.5-36J18 ● SUS1.5-36J19 ● SUS1.5-36J20 ● SUS1.5-36J22 ● SUS1.5-36J25			m1.5	36							S1	10	45	54	57	15	14	29	—
S1K	10	4 × 1.8																	
S1K	12	4 × 1.8																	
S1K	14	5 × 2.3																	
S1K	15	5 × 2.3																	
S1K	16	5 × 2.3																	
S1K	18	6 × 2.8																	
S1K	19	6 × 2.8																	
S1K	20	6 × 2.8																	
S1K	22	6 × 2.8																	
S1K	25	8 × 3.3																	
SUS1.5-40 ● SUS1.5-40J12 ● SUS1.5-40J14 ● SUS1.5-40J15 ● SUS1.5-40J16 ● SUS1.5-40J18 ● SUS1.5-40J19 ● SUS1.5-40J20 ● SUS1.5-40J22 ● SUS1.5-40J25	m1.5	40			S1	12	45	60	63	15	14	29							—
S1K			12	4 × 1.8															
S1K			14	5 × 2.3															
S1K			15	5 × 2.3															
S1K			16	5 × 2.3															
S1K			18	6 × 2.8															
S1K			19	6 × 2.8															
S1K			20	6 × 2.8															
S1K			22	6 × 2.8															
S1K			25	8 × 3.3															
SUS1.5-42 ● SUS1.5-42J12 ● SUS1.5-42J14 ● SUS1.5-42J15 ● SUS1.5-42J16 ● SUS1.5-42J18 ● SUS1.5-42J19 ● SUS1.5-42J20 ● SUS1.5-42J22 ● SUS1.5-42J25			m1.5	42	S1	12							45	63	66	15	14	29	—
S1K					12	4 × 1.8													
S1K	14	5 × 2.3																	
S1K	15	5 × 2.3																	
S1K	16	5 × 2.3																	
S1K	18	6 × 2.8																	
S1K	19	6 × 2.8																	
S1K	20	6 × 2.8																	
S1K	22	6 × 2.8																	
S1K	25	8 × 3.3																	
SUS1.5-45 ● SUS1.5-45J12 ● SUS1.5-45J14 ● SUS1.5-45J15 ● SUS1.5-45J16 ● SUS1.5-45J18 ● SUS1.5-45J19 ● SUS1.5-45J20 ● SUS1.5-45J22 ● SUS1.5-45J25	m1.5	45			S1	12	45	67.5	70.5	15	14	29							—
S1K					12	4 × 1.8													
S1K			14	5 × 2.3															
S1K			15	5 × 2.3															
S1K			16	5 × 2.3															
S1K			18	6 × 2.8															
S1K			19	6 × 2.8															
S1K			20	6 × 2.8															
S1K			22	6 × 2.8															
S1K			25	8 × 3.3															
SUS1.5-48 ● SUS1.5-48J12 ● SUS1.5-48J14 ● SUS1.5-48J15 ● SUS1.5-48J16 ● SUS1.5-48J18 ● SUS1.5-48J19 ● SUS1.5-48J20 ● SUS1.5-48J22 ● SUS1.5-48J25			m1.5	48	S1	12							45	72	75	15	14	29	—
S1K					12	4 × 1.8													
S1K	14	5 × 2.3																	
S1K	15	5 × 2.3																	
S1K	16	5 × 2.3																	
S1K	18	6 × 2.8																	
S1K	19	6 × 2.8																	
S1K	20	6 × 2.8																	
S1K	22	6 × 2.8																	
S1K	25	8 × 3.3																	

[Caution on Product Characteristics]

- ① The allowable torques shown in the table are calculated values according to the assumed usage conditions. Please see page 35 for more details.
- ② The backlash values shown in the table are the theoretical values for the backlash in the normal direction of a pair of identical gears in mesh.

[Caution on Secondary Operations]

- ① Please read "Caution on Performing Secondary Operations" (Page 36) when performing modifications and/or secondary operations for safety concerns. Haguruma Kobo, the KHK's system for quick modification of KHK stock gears is also available.
- ② Avoid performing secondary operations that narrow the tooth width as it affects precision and strength.



Stainless Steel Spur Gears

Newly added



Spur Gears

Helical Gears

Internal Gears

Racks

CP Racks & Pinions

Miter Gears

Bevel Gears

Screw Gears

Worm Gear Pair

Bevel Gearboxes

Other Products

Set Screw		Allowable torque (N·m)		Allowable torque (kgf·m)		Backlash (mm)	Weight (kg)	Catalog No. ● : J Series (Available-on-request)
Size	J	Bending strength	Surface durability	Bending strength	Surface durability			
—	—	23.2	2.74	2.36	0.28	0.12~0.26	0.39	SUS1.5-35
M4*	7							●SUS1.5-35J10
M4*	7							●SUS1.5-35J12
M4	7							●SUS1.5-35J14
M4	7							●SUS1.5-35J15
M4	7							●SUS1.5-35J16
M5	7							●SUS1.5-35J18
M5	7							●SUS1.5-35J19
M5	7							●SUS1.5-35J20
M5	7							●SUS1.5-35J22
M6	7	●SUS1.5-35J25						
—	—	24.0	2.91	2.45	0.30	0.12~0.26	0.42	SUS1.5-36
M4*	7							●SUS1.5-36J10
M4*	7							●SUS1.5-36J12
M4*	7							●SUS1.5-36J14
M4*	7							●SUS1.5-36J15
M4*	7							●SUS1.5-36J16
M5	7							●SUS1.5-36J18
M5	7							●SUS1.5-36J19
M5	7							●SUS1.5-36J20
M5	7							●SUS1.5-36J22
M6	7	●SUS1.5-36J25						
—	—	27.5	3.62	2.80	0.37	0.12~0.26	0.48	SUS1.5-40
M4*	7							●SUS1.5-40J12
M4*	7							●SUS1.5-40J14
M4*	7							●SUS1.5-40J15
M4*	7							●SUS1.5-40J16
M5	7							●SUS1.5-40J18
M5	7							●SUS1.5-40J19
M5	7							●SUS1.5-40J20
M5	7							●SUS1.5-40J22
M6	7							●SUS1.5-40J25
—	—	29.2	4.01	2.98	0.41	0.14~0.32	0.51	SUS1.5-42
M4*	7							●SUS1.5-42J12
M4*	7							●SUS1.5-42J14
M4*	7							●SUS1.5-42J15
M4*	7							●SUS1.5-42J16
M5	7							●SUS1.5-42J18
M5	7							●SUS1.5-42J19
M5	7							●SUS1.5-42J20
M5	7							●SUS1.5-42J22
M6	7							●SUS1.5-42J25
—	—	31.9	4.64	3.25	0.47	0.14~0.32	0.57	SUS1.5-45
M4*	7							●SUS1.5-45J12
M4*	7							●SUS1.5-45J14
M4*	7							●SUS1.5-45J15
M4*	7							●SUS1.5-45J16
M5	7							●SUS1.5-45J18
M5	7							●SUS1.5-45J19
M5	7							●SUS1.5-45J20
M5	7							●SUS1.5-45J22
M6	7							●SUS1.5-45J25
—	—	34.5	5.31	3.52	0.54	0.14~0.32	0.62	SUS1.5-48
M4*	7							●SUS1.5-48J12
M4*	7							●SUS1.5-48J14
M4*	7							●SUS1.5-48J15
M4*	7							●SUS1.5-48J16
M5	7							●SUS1.5-48J18
M5	7							●SUS1.5-48J19
M5	7							●SUS1.5-48J20
M5	7							●SUS1.5-48J22
M6	7							●SUS1.5-48J25

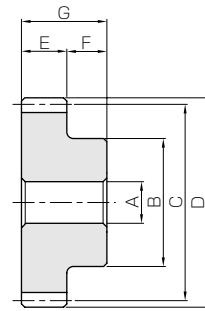
[Caution on J series]

- ① As available-on-request products, requires a lead-time for shipping within 3 working-days (excludes the day ordered), after placing an order. Please allow additional shipping time to get to your local distributor.
- ② Number of products we can process for one order is 1 to 20 units. For quantities of 21 or more pieces, we need to quote price and lead time.
- ③ Keyways are made according to JIS B1301 standards, Js 9 tolerance.
- ④ Certain products which would otherwise have a very long tapped hole are conterbored to reduce the length of the tap. (Products marked with "*" are tap size).
- ⑤ For products having a tapped hole, a set screw is included.



Specifications	
Precision grade	JIS grade N8 (JIS B1702-1: 1998) * JIS grade 4 (JIS B1702: 1976)
Gear teeth	Standard full depth
Pressure angle	20°
Material	SUS303
Heat treatment	—
Tooth hardness	less than 187HB

* The precision grade of J Series products is equivalent to the value shown in the table.



S1

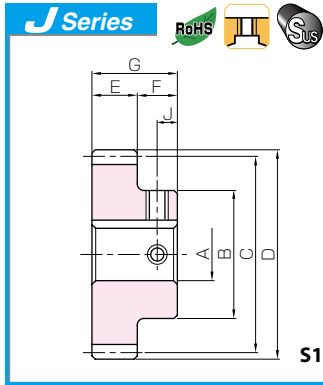
Catalog No. ● : J Series (Available-on-request)	Module	No. of teeth	Shape	Bore	Hub dia.	Pitch dia.	Outside dia.	Face width	Hub width	Total length	Keyway
				A _{H7}	B	C	D	E	F	G	Width×Depth
SUS1.5-50 ● SUS1.5-50J12 ● SUS1.5-50J14 ● SUS1.5-50J15 ● SUS1.5-50J16 ● SUS1.5-50J18 ● SUS1.5-50J19 ● SUS1.5-50J20 ● SUS1.5-50J22 ● SUS1.5-50J25 ● SUS1.5-50J28 ● SUS1.5-50J30	m1.5	50	S1	12	50	75	78	15	14	29	—
			S1K	12							4 x 1.8
			S1K	14							5 x 2.3
			S1K	15							5 x 2.3
			S1K	16							5 x 2.3
			S1K	18							6 x 2.8
			S1K	19							6 x 2.8
			S1K	20							6 x 2.8
			S1K	22							6 x 2.8
			S1K	25							8 x 3.3
			S1K	28							8 x 3.3
			S1K	30							8 x 3.3
			SUS1.5-55 ● SUS1.5-55J12 ● SUS1.5-55J14 ● SUS1.5-55J15 ● SUS1.5-55J16 ● SUS1.5-55J18 ● SUS1.5-55J19 ● SUS1.5-55J20 ● SUS1.5-55J22 ● SUS1.5-55J25 ● SUS1.5-55J28 ● SUS1.5-55J30 ● SUS1.5-55J32	m1.5							55
S1K	12	4 x 1.8									
S1K	14	5 x 2.3									
S1K	15	5 x 2.3									
S1K	16	5 x 2.3									
S1K	18	6 x 2.8									
S1K	19	6 x 2.8									
S1K	20	6 x 2.8									
S1K	22	6 x 2.8									
S1K	25	8 x 3.3									
S1K	28	8 x 3.3									
S1K	30	8 x 3.3									
S1K	32	10 x 3.3									
SUS1.5-56 ● SUS1.5-56J12 ● SUS1.5-56J14 ● SUS1.5-56J15 ● SUS1.5-56J16 ● SUS1.5-56J18 ● SUS1.5-56J19 ● SUS1.5-56J20 ● SUS1.5-56J22 ● SUS1.5-56J25 ● SUS1.5-56J28 ● SUS1.5-56J30 ● SUS1.5-56J32	m1.5	56	S1	12	55	84	87	15	14	29	—
			S1K	12							4 x 1.8
			S1K	14							5 x 2.3
			S1K	15							5 x 2.3
			S1K	16							5 x 2.3
			S1K	18							6 x 2.8
			S1K	19							6 x 2.8
			S1K	20							6 x 2.8
			S1K	22							6 x 2.8
			S1K	25							8 x 3.3
			S1K	28							8 x 3.3
			S1K	30							8 x 3.3
			S1K	32							10 x 3.3
SUS1.5-60 ● SUS1.5-60J15 ● SUS1.5-60J16 ● SUS1.5-60J18 ● SUS1.5-60J19 ● SUS1.5-60J20 ● SUS1.5-60J22 ● SUS1.5-60J25 ● SUS1.5-60J28 ● SUS1.5-60J30 ● SUS1.5-60J32 ● SUS1.5-60J35	m1.5	60	S1	15	60	90	93	15	14	29	—
			S1K	15							5 x 2.3
			S1K	16							5 x 2.3
			S1K	18							6 x 2.8
			S1K	19							6 x 2.8
			S1K	20							6 x 2.8
			S1K	22							6 x 2.8
			S1K	25							8 x 3.3
			S1K	28							8 x 3.3
			S1K	30							8 x 3.3
			S1K	32							10 x 3.3
			S1K	35							10 x 3.3
			SUS1.5-64 ● SUS1.5-64J15 ● SUS1.5-64J16 ● SUS1.5-64J18 ● SUS1.5-64J19 ● SUS1.5-64J20 ● SUS1.5-64J22 ● SUS1.5-64J25 ● SUS1.5-64J28 ● SUS1.5-64J30 ● SUS1.5-64J32 ● SUS1.5-64J35	m1.5							64
S1K	15	5 x 2.3									
S1K	16	5 x 2.3									
S1K	18	6 x 2.8									
S1K	19	6 x 2.8									
S1K	20	6 x 2.8									
S1K	22	6 x 2.8									
S1K	25	8 x 3.3									
S1K	28	8 x 3.3									
S1K	30	8 x 3.3									
S1K	32	10 x 3.3									
S1K	35	10 x 3.3									

[Caution on Product Characteristics]

- ① The allowable torques shown in the table are calculated values according to the assumed usage conditions. Please see page 35 for more details.
- ② The backlash values shown in the table are the theoretical values for the backlash in the normal direction of a pair of identical gears in mesh.

[Caution on Secondary Operations]

- ① Please read "Caution on Performing Secondary Operations" (Page 36) when performing modifications and/or secondary operations for safety concerns. Haguruma Kobo, the KHK's system for quick modification of KHK stock gears is also available.
- ② Avoid performing secondary operations that narrow the tooth width as it affects precision and strength.



Stainless Steel Spur Gears

Newly added



Spur Gears

Helical Gears

Internal Gears

Racks

CP Racks & Pinions

Miter Gears

Bevel Gears

Screw Gears

Worm Gear Pair

Bevel Gearboxes

Other Products

Set Screw		Allowable torque (N·m)		Allowable torque (kgf·m)		Backlash (mm)	Weight (kg)	Catalog No. ● : J Series (Available-on-request)
Size	J	Bending strength	Surface durability	Bending strength	Surface durability			
—	—	36.3	5.79	3.70	0.59	0.14~0.32	0.71 ●SUS1.5-50 ●SUS1.5-50J12 ●SUS1.5-50J14 ●SUS1.5-50J15 ●SUS1.5-50J16 ●SUS1.5-50J18 ●SUS1.5-50J19 ●SUS1.5-50J20 ●SUS1.5-50J22 ●SUS1.5-50J25 ●SUS1.5-50J28 ●SUS1.5-50J30	
M4*	7							
M4*	7							
M4*	7							
M4*	7							
M5	7							
M5	7							
M5	7							
M5	7							
M6	7							
M6	7							
M6	7							
—	—	40.7	7.08	4.15	0.72	0.14~0.32	0.86 ●SUS1.5-55 ●SUS1.5-55J12 ●SUS1.5-55J14 ●SUS1.5-55J15 ●SUS1.5-55J16 ●SUS1.5-55J18 ●SUS1.5-55J19 ●SUS1.5-55J20 ●SUS1.5-55J22 ●SUS1.5-55J25 ●SUS1.5-55J28 ●SUS1.5-55J30 ●SUS1.5-55J32	
M4*	7							
M4*	7							
M4*	7							
M4*	7							
M5*	7							
M5*	7							
M5*	7							
M5	7							
M6	7							
M6	7							
M6	7							
M8	7							
—	—	41.6	7.36	4.24	0.75	0.14~0.32	0.88 ●SUS1.5-56 ●SUS1.5-56J12 ●SUS1.5-56J14 ●SUS1.5-56J15 ●SUS1.5-56J16 ●SUS1.5-56J18 ●SUS1.5-56J19 ●SUS1.5-56J20 ●SUS1.5-56J22 ●SUS1.5-56J25 ●SUS1.5-56J28 ●SUS1.5-56J30 ●SUS1.5-56J32	
M4*	7							
M4*	7							
M4*	7							
M4*	7							
M5*	7							
M5*	7							
M5*	7							
M5	7							
M6	7							
M6	7							
M6	7							
M8	7							
—	—	45.2	8.51	4.61	0.87	0.14~0.32	1.01 ●SUS1.5-60 ●SUS1.5-60J15 ●SUS1.5-60J16 ●SUS1.5-60J18 ●SUS1.5-60J19 ●SUS1.5-60J20 ●SUS1.5-60J22 ●SUS1.5-60J25 ●SUS1.5-60J28 ●SUS1.5-60J30 ●SUS1.5-60J32 ●SUS1.5-60J35	
M4*	7							
M4*	7							
M5*	7							
M5*	7							
M5*	7							
M5*	7							
M5*	7							
M6	7							
M6	7							
M6	7							
M8	7							
M8	7							
—	—	48.8	9.75	4.97	0.99	0.14~0.32	1.12 ●SUS1.5-64 ●SUS1.5-64J15 ●SUS1.5-64J16 ●SUS1.5-64J18 ●SUS1.5-64J19 ●SUS1.5-64J20 ●SUS1.5-64J22 ●SUS1.5-64J25 ●SUS1.5-64J28 ●SUS1.5-64J30 ●SUS1.5-64J32 ●SUS1.5-64J35	
M4*	7							
M4*	7							
M5*	7							
M5*	7							
M5*	7							
M5*	7							
M5*	7							
M6	7							
M6	7							
M6	7							
M8	7							
M8	7							

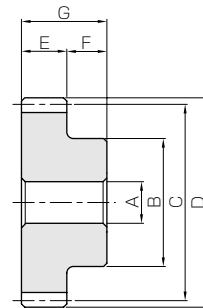
[Caution on J series]

- ① As available-on-request products, requires a lead-time for shipping within 3 working-days (excludes the day ordered), after placing an order. Please allow additional shipping time to get to your local distributor.
- ② Number of products we can process for one order is 1 to 20 units. For quantities of 21 or more pieces, we need to quote price and lead time.
- ③ Keyways are made according to JIS B1301 standards, Js 9 tolerance.
- ④ Certain products which would otherwise have a very long tapped hole are conterbored to reduce the length of the tap. (Products marked with "*" are tap size).
- ⑤ For products having a tapped hole, a set screw is included.



Specifications	
Precision grade	JIS grade N8 (JIS B1702-1: 1998) * JIS grade 4 (JIS B1702: 1976)
Gear teeth	Standard full depth
Pressure angle	20°
Material	SUS303
Heat treatment	—
Tooth hardness	less than 187HB

* The precision grade of J Series products is equivalent to the value shown in the table.



S1

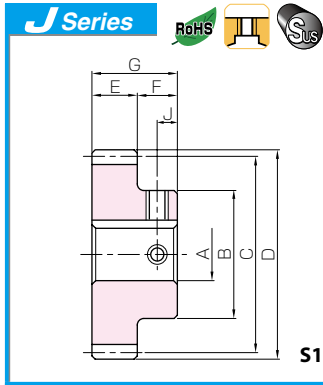
Catalog No. ● : J Series (Available-on-request)	Module	No. of teeth	Shape	Bore	Hub dia.	Pitch dia.	Outside dia.	Face width	Hub width	Total length	Keyway
				A _{H7}	B	C	D	E	F	G	Width×Depth
SUS1.5-70 ● SUS1.5-70J15 ● SUS1.5-70J16 ● SUS1.5-70J18 ● SUS1.5-70J19 ● SUS1.5-70J20 ● SUS1.5-70J22 ● SUS1.5-70J25 ● SUS1.5-70J28 ● SUS1.5-70J30 ● SUS1.5-70J32 ● SUS1.5-70J35 ● SUS1.5-70J40	m1.5	70	S1	15	70	105	108	15	14	29	—
			S1K	15							5 x 2.3
			S1K	16							5 x 2.3
			S1K	18							6 x 2.8
			S1K	19							6 x 2.8
			S1K	20							6 x 2.8
			S1K	22							6 x 2.8
			S1K	25							8 x 3.3
			S1K	28							8 x 3.3
			S1K	30							8 x 3.3
			S1K	32							10 x 3.3
			S1K	35							10 x 3.3
			S1K	40							12 x 3.3
SUS1.5-75 ● SUS1.5-75J15 ● SUS1.5-75J16 ● SUS1.5-75J18 ● SUS1.5-75J19 ● SUS1.5-75J20 ● SUS1.5-75J22 ● SUS1.5-75J25 ● SUS1.5-75J28 ● SUS1.5-75J30 ● SUS1.5-75J32 ● SUS1.5-75J35 ● SUS1.5-75J40	m1.5	75	S1	15	70	112.5	115.5	15	14	29	—
			S1K	15							5 x 2.3
			S1K	16							5 x 2.3
			S1K	18							6 x 2.8
			S1K	19							6 x 2.8
			S1K	20							6 x 2.8
			S1K	22							6 x 2.8
			S1K	25							8 x 3.3
			S1K	28							8 x 3.3
			S1K	30							8 x 3.3
			S1K	32							10 x 3.3
			S1K	35							10 x 3.3
			S1K	40							12 x 3.3
SUS1.5-80 ● SUS1.5-80J15 ● SUS1.5-80J16 ● SUS1.5-80J18 ● SUS1.5-80J19 ● SUS1.5-80J20 ● SUS1.5-80J22 ● SUS1.5-80J25 ● SUS1.5-80J28 ● SUS1.5-80J30 ● SUS1.5-80J32 ● SUS1.5-80J35 ● SUS1.5-80J40 ● SUS1.5-80J45	m1.5	80	S1	15	80	120	123	15	14	29	—
			S1K	15							5 x 2.3
			S1K	16							5 x 2.3
			S1K	18							6 x 2.8
			S1K	19							6 x 2.8
			S1K	20							6 x 2.8
			S1K	22							6 x 2.8
			S1K	25							8 x 3.3
			S1K	28							8 x 3.3
			S1K	30							8 x 3.3
			S1K	32							10 x 3.3
			S1K	35							10 x 3.3
			S1K	40							12 x 3.3
S1K	45	14 x 3.8									
SUS1.5-90 ● SUS1.5-90J15 ● SUS1.5-90J16 ● SUS1.5-90J18 ● SUS1.5-90J19 ● SUS1.5-90J20 ● SUS1.5-90J22 ● SUS1.5-90J25 ● SUS1.5-90J28 ● SUS1.5-90J30 ● SUS1.5-90J32 ● SUS1.5-90J35 ● SUS1.5-90J40 ● SUS1.5-90J45	m1.5	90	S1	15	80	135	138	15	14	29	—
			S1K	15							5 x 2.3
			S1K	16							5 x 2.3
			S1K	18							6 x 2.8
			S1K	19							6 x 2.8
			S1K	20							6 x 2.8
			S1K	22							6 x 2.8
			S1K	25							8 x 3.3
			S1K	28							8 x 3.3
			S1K	30							8 x 3.3
			S1K	32							10 x 3.3
			S1K	35							10 x 3.3
			S1K	40							12 x 3.3
S1K	45	14 x 3.8									

[Caution on Product Characteristics]

- ① The allowable torques shown in the table are calculated values according to the assumed usage conditions. Please see page 35 for more details.
- ② The backlash values shown in the table are the theoretical values for the backlash in the normal direction of a pair of identical gears in mesh.

[Caution on Secondary Operations]

- ① Please read "Caution on Performing Secondary Operations" (Page 36) when performing modifications and/or secondary operations for safety concerns. Haguruma Kobo, the KHK's system for quick modification of KHK stock gears is also available.
- ② Avoid performing secondary operations that narrow the tooth width as it affects precision and strength.



Stainless Steel Spur Gears

Newly added



Spur Gears

Helical Gears

Internal Gears

Racks

CP Racks & Pinions

Miter Gears

Bevel Gears

Screw Gears

Worm Gear Pair

Bevel Gearboxes

Other Products

Set Screw		Allowable torque (N·m)		Allowable torque (kgf·m)		Backlash (mm)	Weight (kg)	Catalog No. ● : J Series (Available-on-request)
Size	J	Bending strength	Surface durability	Bending strength	Surface durability			
—	—	54.2	11.8	5.52	1.20	0.14~0.32	1.39	SUS1.5-70
M4*	7							●SUS1.5-70J15
M4*	7							●SUS1.5-70J16
M5*	7							●SUS1.5-70J18
M5*	7							●SUS1.5-70J19
M5*	7							●SUS1.5-70J20
M5*	7							●SUS1.5-70J22
M6*	7							●SUS1.5-70J25
M6*	7							●SUS1.5-70J28
M6*	7							●SUS1.5-70J30
M8	7							●SUS1.5-70J32
M8	7							●SUS1.5-70J35
M8	7	●SUS1.5-70J40						
—	—	58.7	13.6	5.99	1.39	0.14~0.32	1.54	SUS1.5-75
M4*	7							●SUS1.5-75J15
M4*	7							●SUS1.5-75J16
M5*	7							●SUS1.5-75J18
M5*	7							●SUS1.5-75J19
M5*	7							●SUS1.5-75J20
M5*	7							●SUS1.5-75J22
M6*	7							●SUS1.5-75J25
M6*	7							●SUS1.5-75J28
M6*	7							●SUS1.5-75J30
M8	7							●SUS1.5-75J32
M8	7							●SUS1.5-75J35
M8	7	●SUS1.5-75J40						
—	—	63.2	15.6	6.45	1.59	0.14~0.32	1.83	SUS1.5-80
M4*	7							●SUS1.5-80J15
M4*	7							●SUS1.5-80J16
M5*	7							●SUS1.5-80J18
M5*	7							●SUS1.5-80J19
M5*	7							●SUS1.5-80J20
M5*	7							●SUS1.5-80J22
M6*	7							●SUS1.5-80J25
M6*	7							●SUS1.5-80J28
M6*	7							●SUS1.5-80J30
M8	7							●SUS1.5-80J32
M8	7							●SUS1.5-80J35
M8	7	●SUS1.5-80J40						
M10	7	●SUS1.5-80J45						
—	—	72.3	20.1	7.37	2.05	0.18~0.38	2.18	SUS1.5-90
M4*	7							●SUS1.5-90J15
M4*	7							●SUS1.5-90J16
M5*	7							●SUS1.5-90J18
M5*	7							●SUS1.5-90J19
M5*	7							●SUS1.5-90J20
M5*	7							●SUS1.5-90J22
M6*	7							●SUS1.5-90J25
M6*	7							●SUS1.5-90J28
M6*	7							●SUS1.5-90J30
M8	7							●SUS1.5-90J32
M8	7							●SUS1.5-90J35
M8	7	●SUS1.5-90J40						
M10	7	●SUS1.5-90J45						

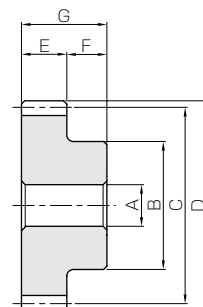
[Caution on J series]

- ① As available-on-request products, requires a lead-time for shipping within 3 working-days (excludes the day ordered), after placing an order. Please allow additional shipping time to get to your local distributor.
- ② Number of products we can process for one order is 1 to 20 units. For quantities of 21 or more pieces, we need to quote price and lead time.
- ③ Keyways are made according to JIS B1301 standards, Js 9 tolerance.
- ④ Certain products which would otherwise have a very long tapped hole are conterbored to reduce the length of the tap. (Products marked with "*" are tap size).
- ⑤ For products having a tapped hole, a set screw is included.



Specifications	
Precision grade	JIS grade N8 (JIS B1702-1: 1998) * JIS grade 4 (JIS B1702: 1976)
Gear teeth	Standard full depth
Pressure angle	20°
Material	SUS303
Heat treatment	—
Tooth hardness	less than 187HB

* The precision grade of J Series products is equivalent to the value shown in the table.



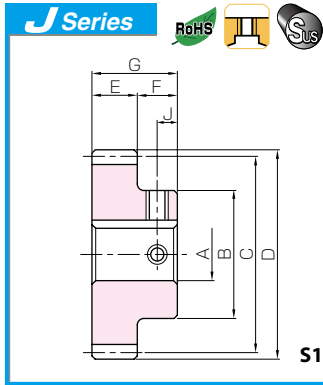
S1

Catalog No. ●: J Series (Available-on-request)	Module	No. of teeth	Shape	Bore	Hub dia.	Pitch dia.	Outside dia.	Face width	Hub width	Total length	Keyway
				A _{H7}	B	C	D	E	F	G	Width×Depth
SUS1.5-100	m1.5	100	S1	15	80	150	153	15	14	29	—
● SUS1.5-100J15			S1K	15							5 x 2.3
● SUS1.5-100J16			S1K	16							5 x 2.3
● SUS1.5-100J18			S1K	18							6 x 2.8
● SUS1.5-100J19			S1K	19							6 x 2.8
● SUS1.5-100J20			S1K	20							6 x 2.8
● SUS1.5-100J22			S1K	22							6 x 2.8
● SUS1.5-100J25			S1K	25							8 x 3.3
● SUS1.5-100J28			S1K	28							8 x 3.3
● SUS1.5-100J30			S1K	30							8 x 3.3
● SUS1.5-100J32			S1K	32							10 x 3.3
● SUS1.5-100J35			S1K	35							10 x 3.3
● SUS1.5-100J40			S1K	40							12 x 3.3
● SUS1.5-100J45			S1K	45							14 x 3.8

[Caution on Product Characteristics] ① The allowable torques shown in the table are calculated values according to the assumed usage conditions. Please see page 35 for more details.
② The backlash values shown in the table are the theoretical values for the backlash in the normal direction of a pair of identical gears in mesh.

[Caution on Secondary Operations] ① Please read “Caution on Performing Secondary Operations” (Page 36) when performing modifications and/or secondary operations for safety concerns. Haguruma Kobo, the KHK’s system for quick modification of KHK stock gears is also available.
② Avoid performing secondary operations that narrow the tooth width as it affects precision and strength.

- Spur Gears
- Helical Gears
- Internal Gears
- Racks
- CP Racks & Pinions
- Miter Gears
- Bevel Gears
- Screw Gears
- Worm Gear Pair
- Bevel Gearboxes
- Other Products



Stainless Steel Spur Gears

Newly added



Set Screw		Allowable torque (N·m)		Allowable torque (kgf·m)		Backlash (mm)	Weight (kg)	Catalog No. ● : J Series (Available-on-request)
Size	J	Bending strength	Surface durability	Bending strength	Surface durability			
—	—	81.4	25.2	8.30	2.57	0.18~0.38	2.58	SUS1.5-100
M4*	7						2.57	● SUS1.5-100J15
M4*	7						2.56	● SUS1.5-100J16
M5*	7						2.55	● SUS1.5-100J18
M5*	7						2.54	● SUS1.5-100J19
M5*	7						2.53	● SUS1.5-100J20
M5*	7						2.52	● SUS1.5-100J22
M6*	7						2.49	● SUS1.5-100J25
M6*	7						2.46	● SUS1.5-100J28
M6*	7						2.44	● SUS1.5-100J30
M8	7						2.41	● SUS1.5-100J32
M8	7						2.37	● SUS1.5-100J35
M8	7						2.31	● SUS1.5-100J40
M10	7	2.22	● SUS1.5-100J45					

[Caution on J series]

- ① As available-on-request products, requires a lead-time for shipping within **3 working-days (excludes the day ordered)**, after placing an order. Please allow additional shipping time to get to your local distributor.
- ② Number of products we can process for one order is **1 to 20 units**. For quantities of 21 or more pieces, we need to quote price and lead time.
- ③ Keyways are made according to JIS B1301 standards, Js 9 tolerance.
- ④ Certain products which would otherwise have a very long tapped hole are conterbored to reduce the length of the tap. (Products marked with "*" are tap size).
- ⑤ For products having a tapped hole, a set screw is included.

Spur Gears

Helical Gears

Internal Gears

Racks

CP Racks & Pinions

Miter Gears

Bevel Gears

Screw Gears

Worm Gear Pair

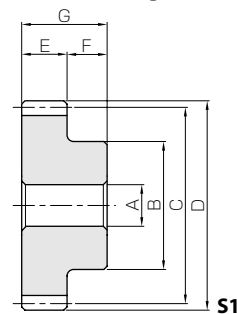
Bevel Gearboxes

Other Products



Specifications	
Precision grade	JIS grade N8 (JIS B1702-1: 1998) * JIS grade 4 (JIS B1702: 1976)
Gear teeth	Standard full depth
Pressure angle	20°
Material	SUS303
Heat treatment	—
Tooth hardness	less than 187HB

* The precision grade of J Series products is equivalent to the value shown in the table.

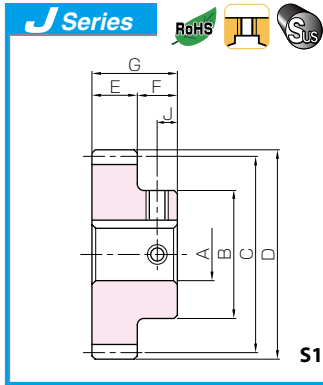


- Spur Gears
- Helical Gears
- Internal Gears
- Racks
- CP Racks & Pinions
- Miter Gears
- Bevel Gears
- Screw Gears
- Worm Gear Pair
- Bevel Gearboxes
- Other Products

Catalog No. ● : J Series (Available-on-request)	Module	No. of teeth	Shape	Bore	Hub dia.	Pitch dia.	Outside dia.	Face width	Hub width	Total length	Keyway
				A _{H7}	B	C	D	E	F	G	WidthxDepth
SUS2-15 ● SUS2-15J12	m2	15	S1	12	24	30	34	20	16	36	—
S1K			12	4 x 1.8							
SUS2-16 ● SUS2-16J12		16	S1	12	26	32	36	20	16	36	—
S1K			12	4 x 1.8							
SUS2-18 ● SUS2-18J12 ● SUS2-18J14 ● SUS2-18J15 ● SUS2-18J16		18	S1	12	30	36	40	20	16	36	—
S1K			12	4 x 1.8							
S1K			14	5 x 2.3							
S1K			15	5 x 2.3							
S1K			16	5 x 2.3							
SUS2-20 ● SUS2-20J12 ● SUS2-20J14 ● SUS2-20J15 ● SUS2-20J16 ● SUS2-20J18		20	S1	12	32	40	44	20	16	36	—
S1K			12	4 x 1.8							
S1K			14	5 x 2.3							
S1K			15	5 x 2.3							
S1K			16	5 x 2.3							
S1K			18	6 x 2.8							
SUS2-22 ● SUS2-22J12 ● SUS2-22J14 ● SUS2-22J15 ● SUS2-22J16 ● SUS2-22J18 ● SUS2-22J19 ● SUS2-22J20	22	S1	12	36	44	48	20	16	36	—	
S1K		12	4 x 1.8								
S1K		14	5 x 2.3								
S1K		15	5 x 2.3								
S1K		16	5 x 2.3								
S1K		18	6 x 2.8								
S1K		19	6 x 2.8								
S1K		20	6 x 2.8								
SUS2-24 ● SUS2-24J12 ● SUS2-24J14 ● SUS2-24J15 ● SUS2-24J16 ● SUS2-24J18 ● SUS2-24J19 ● SUS2-24J20 ● SUS2-24J22	24	S1	12	38	48	52	20	16	36	—	
S1K		12	4 x 1.8								
S1K		14	5 x 2.3								
S1K		15	5 x 2.3								
S1K		16	5 x 2.3								
S1K		18	6 x 2.8								
S1K		19	6 x 2.8								
S1K		20	6 x 2.8								
S1K		22	6 x 2.8								
SUS2-25 ● SUS2-25J12 ● SUS2-25J14 ● SUS2-25J15 ● SUS2-25J16 ● SUS2-25J18 ● SUS2-25J19 ● SUS2-25J20 ● SUS2-25J22		25	S1							12	40
S1K	12		4 x 1.8								
S1K	14		5 x 2.3								
S1K	15		5 x 2.3								
S1K	16		5 x 2.3								
S1K	18		6 x 2.8								
S1K	19		6 x 2.8								
S1K	20		6 x 2.8								
S1K	22		6 x 2.8								
SUS2-28 ● SUS2-28J12 ● SUS2-28J14 ● SUS2-28J15 ● SUS2-28J16 ● SUS2-28J18 ● SUS2-28J19 ● SUS2-28J20 ● SUS2-28J22 ● SUS2-28J25	28	S1	12	45	56	60	20	16	36	—	
S1K		12	4 x 1.8								
S1K		14	5 x 2.3								
S1K		15	5 x 2.3								
S1K		16	5 x 2.3								
S1K		18	6 x 2.8								
S1K		19	6 x 2.8								
S1K		20	6 x 2.8								
S1K		22	6 x 2.8								
S1K		25	8 x 3.3								
SUS2-30 ● SUS2-30J12 ● SUS2-30J14 ● SUS2-30J15 ● SUS2-30J16 ● SUS2-30J18 ● SUS2-30J19 ● SUS2-30J20 ● SUS2-30J22 ● SUS2-30J25 ● SUS2-30J28 ● SUS2-30J30		30	S1							12	50
S1K	12		4 x 1.8								
S1K	14		5 x 2.3								
S1K	15		5 x 2.3								
S1K	16		5 x 2.3								
S1K	18		6 x 2.8								
S1K	19		6 x 2.8								
S1K	20		6 x 2.8								
S1K	22		6 x 2.8								
S1K	25		8 x 3.3								
S1K	28		8 x 3.3								
S1K	30		8 x 3.3								

[Caution on Product Characteristics] ① The allowable torques shown in the table are calculated values according to the assumed usage conditions. Please see page 35 for more details.
② The backlash values shown in the table are the theoretical values for the backlash in the normal direction of a pair of identical gears in mesh.

[Caution on Secondary Operations] ① Please read "Caution on Performing Secondary Operations" (Page 36) when performing modifications and/or secondary operations for safety concerns. Haguruma Kobo, the KHK's system for quick modification of KHK stock gears is also available.
② Avoid performing secondary operations that narrow the tooth width as it affects precision and strength.



Stainless Steel Spur Gears

Newly added



Spur Gears

Helical Gears

Internal Gears

Racks

CP Racks & Pinions

Miter Gears

Bevel Gears

Screw Gears

Worm Gear Pair

Bevel Gearboxes

Other Products

Set Screw		Allowable torque (N·m)		Allowable torque (kgf·m)		Backlash (mm)	Weight (kg)	Catalog No. ● : J Series (Available-on-request)
Size	J	Bending strength	Surface durability	Bending strength	Surface durability			
—	—	16.3	1.05	1.67	0.11	0.12~0.26	0.13 0.13	SUS2-15
M4	8							● SUS2-15J12
—	—	18.1	1.22	1.85	0.12	0.12~0.26	0.16 0.16	SUS2-16
M4	8							● SUS2-16J12
—	—	21.7	1.59	2.21	0.16	0.12~0.26	0.22 0.21 0.20 0.19 0.19	SUS2-18
M4	8							● SUS2-18J12
M4	8							● SUS2-18J14
M4	8							● SUS2-18J15
M4	8							● SUS2-18J16
—	—	25.4	2.01	2.59	0.20	0.12~0.26	0.26 0.26 0.25 0.24 0.24 0.22	SUS2-20
M4	8							● SUS2-20J12
M4	8							● SUS2-20J14
M4	8							● SUS2-20J15
M5	8							● SUS2-20J16
—	—	29.2	2.48	2.98	0.25	0.14~0.30	0.33 0.33 0.32 0.31 0.30 0.29 0.28 0.27	SUS2-22
M4	8							● SUS2-22J12
M4	8							● SUS2-22J14
M4	8							● SUS2-22J15
M4	8							● SUS2-22J16
M5	8							● SUS2-22J18
M5	8							● SUS2-22J19
M5	8	● SUS2-22J20						
—	—	33.0	3.01	3.37	0.31	0.14~0.30	0.39 0.39 0.38 0.37 0.36 0.34 0.34 0.33 0.31	SUS2-24
M4	8							● SUS2-24J12
M4	8							● SUS2-24J14
M4	8							● SUS2-24J15
M4	8							● SUS2-24J16
M5	8							● SUS2-24J18
M5	8							● SUS2-24J19
M5	8	● SUS2-24J20						
—	—	35.0	3.30	3.57	0.34	0.14~0.30	0.43 0.43 0.41 0.41 0.40 0.38 0.38 0.37 0.35	SUS2-25
M4	8							● SUS2-25J12
M4	8							● SUS2-25J14
M4	8							● SUS2-25J15
M4	8							● SUS2-25J16
M5	8							● SUS2-25J18
M5	8							● SUS2-25J19
M5	8	● SUS2-25J20						
—	—	40.9	4.18	4.17	0.43	0.14~0.30	0.55 0.55 0.53 0.53 0.52 0.50 0.49 0.49 0.47 0.43	SUS2-28
M4*	8							● SUS2-28J12
M4*	8							● SUS2-28J14
M4*	8							● SUS2-28J15
M4*	8							● SUS2-28J16
M5	8							● SUS2-28J18
M5	8							● SUS2-28J19
M5	8							● SUS2-28J20
M6	8	● SUS2-28J25						
—	—	44.8	4.83	4.57	0.49	0.14~0.30	0.65 0.65 0.64 0.63 0.62 0.61 0.60 0.59 0.57 0.54 0.50 0.48	SUS2-30
M4*	8							● SUS2-30J12
M4*	8							● SUS2-30J14
M4*	8							● SUS2-30J15
M4*	8							● SUS2-30J16
M5	8							● SUS2-30J18
M5	8							● SUS2-30J19
M5	8							● SUS2-30J20
M5	8							● SUS2-30J22
M6	8							● SUS2-30J25
M6	8	● SUS2-30J28						
M6	8	● SUS2-30J30						

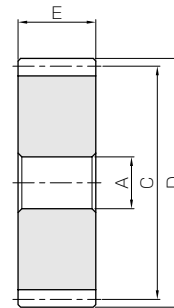
[Caution on J series]

- ① As available-on-request products, requires a lead-time for shipping within 3 working-days (excludes the day ordered), after placing an order. Please allow additional shipping time to get to your local distributor.
- ② Number of products we can process for one order is 1 to 20 units. For quantities of 21 or more pieces, we need to quote price and lead time.
- ③ Keyways are made according to JIS B1301 standards, Js 9 tolerance.
- ④ Certain products which would otherwise have a very long tapped hole are concentered to reduce the length of the tap. (Products marked with "*" are tap size).
- ⑤ For products having a tapped hole, a set screw is included.



Specifications	
Precision grade	JIS grade N8 (JIS B1702-1: 1998) * JIS grade 4 (JIS B1702: 1976)
Gear teeth	Standard full depth
Pressure angle	20°
Material	SUS303
Heat treatment	—
Tooth hardness	less than 187HB

* The precision grade of J Series products is equivalent to the value shown in the table.



S5

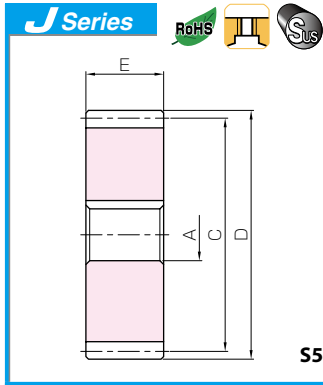
Catalog No. ● : J Series (Available-on-request)	Module	No. of teeth	Shape	Bore	Hub dia.	Pitch dia.	Outside dia.	Face width	Hub width	Total length	Keyway
				A _{H7}	B	C	D	E	F	G	WidthxDepth
SUSA2-32 ● SUSA2-32J15 ● SUSA2-32J16 ● SUSA2-32J18 ● SUSA2-32J19 ● SUSA2-32J20 ● SUSA2-32J22 ● SUSA2-32J25 ● SUSA2-32J28 ● SUSA2-32J30	m2	32	S5	15	—	64	68	20	—	—	—
			S5K	15							5 x 2.3
			S5K	16							5 x 2.3
			S5K	18							6 x 2.8
			S5K	19							6 x 2.8
			S5K	20							6 x 2.8
			S5K	22							6 x 2.8
			S5K	25							8 x 3.3
			S5K	28							8 x 3.3
			S5K	30							8 x 3.3
SUSA2-35 ● SUSA2-35J15 ● SUSA2-35J16 ● SUSA2-35J18 ● SUSA2-35J19 ● SUSA2-35J20 ● SUSA2-35J22 ● SUSA2-35J25 ● SUSA2-35J28 ● SUSA2-35J30 ● SUSA2-35J32	m2	35	S5	15	—	70	74	20	—	—	—
			S5K	15							5 x 2.3
			S5K	16							5 x 2.3
			S5K	18							6 x 2.8
			S5K	19							6 x 2.8
			S5K	20							6 x 2.8
			S5K	22							6 x 2.8
			S5K	25							8 x 3.3
			S5K	28							8 x 3.3
			S5K	30							8 x 3.3
S5K	32	10 x 3.3									
SUSA2-36 ● SUSA2-36J15 ● SUSA2-36J16 ● SUSA2-36J18 ● SUSA2-36J19 ● SUSA2-36J20 ● SUSA2-36J22 ● SUSA2-36J25 ● SUSA2-36J28 ● SUSA2-36J30 ● SUSA2-36J32	m2	36	S5	15	—	72	76	20	—	—	—
			S5K	15							5 x 2.3
			S5K	16							5 x 2.3
			S5K	18							6 x 2.8
			S5K	19							6 x 2.8
			S5K	20							6 x 2.8
			S5K	22							6 x 2.8
			S5K	25							8 x 3.3
			S5K	28							8 x 3.3
			S5K	30							8 x 3.3
S5K	32	10 x 3.3									
SUSA2-40 ● SUSA2-40J15 ● SUSA2-40J16 ● SUSA2-40J18 ● SUSA2-40J19 ● SUSA2-40J20 ● SUSA2-40J22 ● SUSA2-40J25 ● SUSA2-40J28 ● SUSA2-40J30 ● SUSA2-40J32 ● SUSA2-40J35	m2	40	S5	15	—	80	84	20	—	—	—
			S5K	15							5 x 2.3
			S5K	16							5 x 2.3
			S5K	18							6 x 2.8
			S5K	19							6 x 2.8
			S5K	20							6 x 2.8
			S5K	22							6 x 2.8
			S5K	25							8 x 3.3
			S5K	28							8 x 3.3
			S5K	30							8 x 3.3
S5K	32	10 x 3.3									
S5K	35	10 x 3.3									
SUSA2-42 ● SUSA2-42J15 ● SUSA2-42J16 ● SUSA2-42J18 ● SUSA2-42J19 ● SUSA2-42J20 ● SUSA2-42J22 ● SUSA2-42J25 ● SUSA2-42J28 ● SUSA2-42J30 ● SUSA2-42J32 ● SUSA2-42J35	m2	42	S5	15	—	84	88	20	—	—	—
			S5K	15							5 x 2.3
			S5K	16							5 x 2.3
			S5K	18							6 x 2.8
			S5K	19							6 x 2.8
			S5K	20							6 x 2.8
			S5K	22							6 x 2.8
			S5K	25							8 x 3.3
			S5K	28							8 x 3.3
			S5K	30							8 x 3.3
S5K	32	10 x 3.3									
S5K	35	10 x 3.3									

[Caution on Product Characteristics]

- ① The allowable torques shown in the table are calculated values according to the assumed usage conditions. Please see page 35 for more details.
- ② The backlash values shown in the table are the theoretical values for the backlash in the normal direction of a pair of identical gears in mesh.

[Caution on Secondary Operations]

- ① Please read "Caution on Performing Secondary Operations" (Page 36) when performing modifications and/or secondary operations for safety concerns. Haguruma Kobo, the KHK's system for quick modification of KHK stock gears is also available.
- ② Avoid performing secondary operations that narrow the tooth width as it affects precision and strength.



Stainless Steel Spur Gears

Newly added



Set Screw		Allowable torque (N·m)		Allowable torque (kgf·m)		Backlash (mm)	Weight (kg)	Catalog No. ● : J Series (Available-on-request)
Size	J	Bending strength	Surface durability	Bending strength	Surface durability			
—	—	48.9	5.53	4.98	0.56	0.14~0.30	0.47 0.47 0.47 0.46 0.45 0.45 0.44 0.42 0.40 0.39	SUSA2-32 ●SUSA2-32J15 ●SUSA2-32J16 ●SUSA2-32J18 ●SUSA2-32J19 ●SUSA2-32J20 ●SUSA2-32J22 ●SUSA2-32J25 ●SUSA2-32J28 ●SUSA2-32J30
—	—	54.9	6.67	5.60	0.68	0.14~0.30	0.57 0.57 0.57 0.56 0.55 0.55 0.54 0.52 0.50 0.49 0.47	SUSA2-35 ●SUSA2-35J15 ●SUSA2-35J16 ●SUSA2-35J18 ●SUSA2-35J19 ●SUSA2-35J20 ●SUSA2-35J22 ●SUSA2-35J25 ●SUSA2-35J28 ●SUSA2-35J30 ●SUSA2-35J32
—	—	57.0	7.08	5.81	0.72	0.14~0.30	0.61 0.61 0.60 0.59 0.59 0.58 0.57 0.55 0.53 0.52 0.50	SUSA2-36 ●SUSA2-36J15 ●SUSA2-36J16 ●SUSA2-36J18 ●SUSA2-36J19 ●SUSA2-36J20 ●SUSA2-36J22 ●SUSA2-36J25 ●SUSA2-36J28 ●SUSA2-36J30 ●SUSA2-36J32
—	—	65.2	8.85	6.65	0.90	0.14~0.30	0.76 0.75 0.75 0.74 0.74 0.73 0.72 0.70 0.68 0.67 0.65 0.63	SUSA2-40 ●SUSA2-40J15 ●SUSA2-40J16 ●SUSA2-40J18 ●SUSA2-40J19 ●SUSA2-40J20 ●SUSA2-40J22 ●SUSA2-40J25 ●SUSA2-40J28 ●SUSA2-40J30 ●SUSA2-40J32 ●SUSA2-40J35
—	—	69.3	9.81	7.07	1.00	0.18~0.36	0.84 0.84 0.83 0.82 0.82 0.81 0.80 0.78 0.76 0.75 0.73 0.71	SUSA2-42 ●SUSA2-42J15 ●SUSA2-42J16 ●SUSA2-42J18 ●SUSA2-42J19 ●SUSA2-42J20 ●SUSA2-42J22 ●SUSA2-42J25 ●SUSA2-42J28 ●SUSA2-42J30 ●SUSA2-42J32 ●SUSA2-42J35

[Caution on J series]

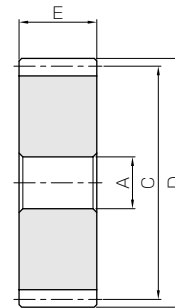
- ① As available-on-request products, requires a lead-time for shipping within **3 working-days** (excludes the day ordered), after placing an order. Please allow additional shipping time to get to your local distributor.
- ② Number of products we can process for one order is **1 to 20 units**. For quantities of 21 or more pieces, we need to quote price and lead time.
- ③ Keyways are made according to JIS B1301 standards, Js 9 tolerance.

- Spur Gears
- Helical Gears
- Internal Gears
- Racks
- CP Racks & Pinions
- Miter Gears
- Bevel Gears
- Screw Gears
- Worm Gear Pair
- Bevel Gearboxes
- Other Products



Specifications	
Precision grade	JIS grade N8 (JIS B1702-1: 1998) * JIS grade 4 (JIS B1702: 1976)
Gear teeth	Standard full depth
Pressure angle	20°
Material	SUS303
Heat treatment	—
Tooth hardness	less than 187HB

* The precision grade of J Series products is equivalent to the value shown in the table.



S5

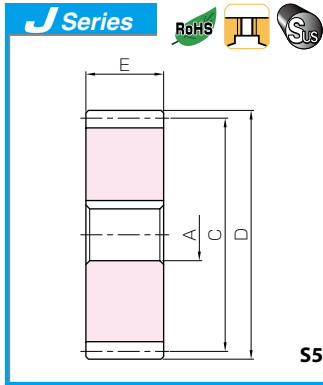
Catalog No. ● J Series (Available-on-request)	Module	No. of teeth	Shape	Bore	Hub dia.	Pitch dia.	Outside dia.	Face width	Hub width	Total length	Keyway
				A _{H7}	B	C	D	E	F	G	Width×Depth
SUSA2-45 ● SUSA2-45J15 ● SUSA2-45J16 ● SUSA2-45J18 ● SUSA2-45J19 ● SUSA2-45J20 ● SUSA2-45J22 ● SUSA2-45J25 ● SUSA2-45J28 ● SUSA2-45J30 ● SUSA2-45J32 ● SUSA2-45J35 ● SUSA2-45J40	m2	45	S5	15	—	90	94	20	—	—	—
			S5K	15							5 x 2.3
			S5K	16							5 x 2.3
			S5K	18							6 x 2.8
			S5K	19							6 x 2.8
			S5K	20							6 x 2.8
			S5K	22							6 x 2.8
			S5K	25							8 x 3.3
			S5K	28							8 x 3.3
			S5K	30							8 x 3.3
			S5K	32							10 x 3.3
			S5K	35							10 x 3.3
			S5K	40							12 x 3.3
			S5K	40							12 x 3.3
SUSA2-48 ● SUSA2-48J15 ● SUSA2-48J16 ● SUSA2-48J18 ● SUSA2-48J19 ● SUSA2-48J20 ● SUSA2-48J22 ● SUSA2-48J25 ● SUSA2-48J28 ● SUSA2-48J30 ● SUSA2-48J32 ● SUSA2-48J35 ● SUSA2-48J40 ● SUSA2-48J45	m2	48	S5	15	—	96	100	20	—	—	—
			S5K	15							5 x 2.3
			S5K	16							5 x 2.3
			S5K	18							6 x 2.8
			S5K	19							6 x 2.8
			S5K	20							6 x 2.8
			S5K	22							6 x 2.8
			S5K	25							8 x 3.3
			S5K	28							8 x 3.3
			S5K	30							8 x 3.3
			S5K	32							10 x 3.3
			S5K	35							10 x 3.3
			S5K	40							12 x 3.3
			S5K	45							14 x 3.8
SUSA2-50 ● SUSA2-50J15 ● SUSA2-50J16 ● SUSA2-50J18 ● SUSA2-50J19 ● SUSA2-50J20 ● SUSA2-50J22 ● SUSA2-50J25 ● SUSA2-50J28 ● SUSA2-50J30 ● SUSA2-50J32 ● SUSA2-50J35 ● SUSA2-50J40 ● SUSA2-50J45	m2	50	S5	15	—	100	104	20	—	—	—
			S5K	15							5 x 2.3
			S5K	16							5 x 2.3
			S5K	18							6 x 2.8
			S5K	19							6 x 2.8
			S5K	20							6 x 2.8
			S5K	22							6 x 2.8
			S5K	25							8 x 3.3
			S5K	28							8 x 3.3
			S5K	30							8 x 3.3
			S5K	32							10 x 3.3
			S5K	35							10 x 3.3
			S5K	40							12 x 3.3
			S5K	45							14 x 3.8
SUSA2-55 ● SUSA2-55J15 ● SUSA2-55J16 ● SUSA2-55J18 ● SUSA2-55J19 ● SUSA2-55J20 ● SUSA2-55J22 ● SUSA2-55J25 ● SUSA2-55J28 ● SUSA2-55J30 ● SUSA2-55J32 ● SUSA2-55J35 ● SUSA2-55J40 ● SUSA2-55J45 ● SUSA2-55J50	m2	55	S5	15	—	110	114	20	—	—	—
			S5K	15							5 x 2.3
			S5K	16							5 x 2.3
			S5K	18							6 x 2.8
			S5K	19							6 x 2.8
			S5K	20							6 x 2.8
			S5K	22							6 x 2.8
			S5K	25							8 x 3.3
			S5K	28							8 x 3.3
			S5K	30							8 x 3.3
			S5K	32							10 x 3.3
			S5K	35							10 x 3.3
			S5K	40							12 x 3.3
			S5K	45							14 x 3.8
S5K	50	14 x 3.8									

[Caution on Product Characteristics]

- The allowable torques shown in the table are calculated values according to the assumed usage conditions. Please see page 35 for more details.
- The backlash values shown in the table are the theoretical values for the backlash in the normal direction of a pair of identical gears in mesh.

[Caution on Secondary Operations]

- Please read "Caution on Performing Secondary Operations" (Page 36) when performing modifications and/or secondary operations for safety concerns. Haguruma Kobo, the KHK's system for quick modification of KHK stock gears is also available.
- Avoid performing secondary operations that narrow the tooth width as it affects precision and strength.



Stainless Steel Spur Gears

Newly added



Spur Gears

Helical Gears

Internal Gears

Racks

CP Racks & Pinions

Miter Gears

Bevel Gears

Screw Gears

Worm Gear Pair

Bevel Gearboxes

Other Products

Set Screw		Allowable torque (N·m)		Allowable torque (kgf·m)		Backlash (mm)	Weight (kg)	Catalog No. ● : J Series (Available-on-request)
Size	J	Bending strength	Surface durability	Bending strength	Surface durability			
—	—	75.5	11.4	7.70	1.16	0.18~0.36	0.96 0.96 0.96 0.95 0.95 0.94 0.93 0.91 0.89 0.88 0.86 0.84 0.79	SUSA2-45 ●SUSA2-45J15 ●SUSA2-45J16 ●SUSA2-45J18 ●SUSA2-45J19 ●SUSA2-45J20 ●SUSA2-45J22 ●SUSA2-45J25 ●SUSA2-45J28 ●SUSA2-45J30 ●SUSA2-45J32 ●SUSA2-45J35 ●SUSA2-45J40
—	—	81.8	13.0	8.34	1.33	0.18~0.36	1.10 1.10 1.10 1.09 1.08 1.08 1.07 1.05 1.03 1.01 1.00 0.97 0.93 0.87	SUSA2-48 ●SUSA2-48J15 ●SUSA2-48J16 ●SUSA2-48J18 ●SUSA2-48J19 ●SUSA2-48J20 ●SUSA2-48J22 ●SUSA2-48J25 ●SUSA2-48J28 ●SUSA2-48J30 ●SUSA2-48J32 ●SUSA2-48J35 ●SUSA2-48J40 ●SUSA2-48J45
—	—	86.0	14.2	8.77	1.44	0.18~0.36	1.20 1.20 1.19 1.18 1.18 1.17 1.16 1.14 1.13 1.11 1.09 1.07 1.02 0.97	SUSA2-50 ●SUSA2-50J15 ●SUSA2-50J16 ●SUSA2-50J18 ●SUSA2-50J19 ●SUSA2-50J20 ●SUSA2-50J22 ●SUSA2-50J25 ●SUSA2-50J28 ●SUSA2-50J30 ●SUSA2-50J32 ●SUSA2-50J35 ●SUSA2-50J40 ●SUSA2-50J45
—	—	96.5	17.3	9.84	1.77	0.18~0.36	1.45 1.45 1.45 1.44 1.44 1.43 1.42 1.40 1.38 1.37 1.35 1.33 1.28 1.23 1.17	SUSA2-55 ●SUSA2-55J15 ●SUSA2-55J16 ●SUSA2-55J18 ●SUSA2-55J19 ●SUSA2-55J20 ●SUSA2-55J22 ●SUSA2-55J25 ●SUSA2-55J28 ●SUSA2-55J30 ●SUSA2-55J32 ●SUSA2-55J35 ●SUSA2-55J40 ●SUSA2-55J45 ●SUSA2-55J50

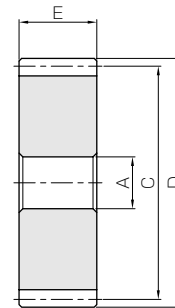
[Caution on J series]

- ① As available-on-request products, requires a lead-time for shipping within 3 working-days (excludes the day ordered), after placing an order. Please allow additional shipping time to get to your local distributor.
- ② Number of products we can process for one order is 1 to 20 units. For quantities of 21 or more pieces, we need to quote price and lead time.
- ③ Keyways are made according to JIS B1301 standards, Js 9 tolerance.



Specifications	
Precision grade	JIS grade N8 (JIS B1702-1: 1998) * JIS grade 4 (JIS B1702: 1976)
Gear teeth	Standard full depth
Pressure angle	20°
Material	SUS303
Heat treatment	—
Tooth hardness	less than 187HB

* The precision grade of J Series products is equivalent to the value shown in the table.



S5

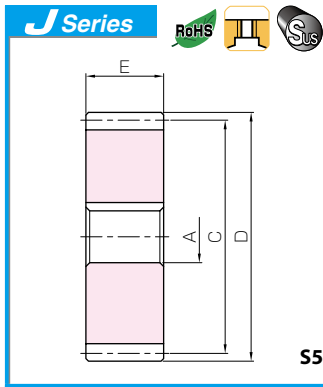
Catalog No. ● : J Series (Available-on-request)	Module	No. of teeth	Shape	Bore	Hub dia.	Pitch dia.	Outside dia.	Face width	Hub width	Total length	Keyway
				A _{H7}	B	C	D	E	F	G	Width×Depth
SUSA2-56 ● SUSA2-56J15 ● SUSA2-56J16 ● SUSA2-56J18 ● SUSA2-56J19 ● SUSA2-56J20 ● SUSA2-56J22 ● SUSA2-56J25 ● SUSA2-56J28 ● SUSA2-56J30 ● SUSA2-56J32 ● SUSA2-56J35 ● SUSA2-56J40 ● SUSA2-56J45 ● SUSA2-56J50	m2	56	S5	15	—	112	116	20	—	—	—
			S5K	15							5 × 2.3
			S5K	16							5 × 2.3
			S5K	18							6 × 2.8
			S5K	19							6 × 2.8
			S5K	20							6 × 2.8
			S5K	22							6 × 2.8
			S5K	25							8 × 3.3
			S5K	28							8 × 3.3
			S5K	30							8 × 3.3
			S5K	32							10 × 3.3
			S5K	35							10 × 3.3
			S5K	40							12 × 3.3
			S5K	45							14 × 3.8
			S5K	50							14 × 3.8
SUSA2-60 ● SUSA2-60J15 ● SUSA2-60J16 ● SUSA2-60J18 ● SUSA2-60J19 ● SUSA2-60J20 ● SUSA2-60J22 ● SUSA2-60J25 ● SUSA2-60J28 ● SUSA2-60J30 ● SUSA2-60J32 ● SUSA2-60J35 ● SUSA2-60J40 ● SUSA2-60J45 ● SUSA2-60J50	m2	60	S5	15	—	120	124	20	—	—	—
			S5K	15							5 × 2.3
			S5K	16							5 × 2.3
			S5K	18							6 × 2.8
			S5K	19							6 × 2.8
			S5K	20							6 × 2.8
			S5K	22							6 × 2.8
			S5K	25							8 × 3.3
			S5K	28							8 × 3.3
			S5K	30							8 × 3.3
			S5K	32							10 × 3.3
			S5K	35							10 × 3.3
			S5K	40							12 × 3.3
			S5K	45							14 × 3.8
			S5K	50							14 × 3.8
SUSA2-64 ● SUSA2-64J15 ● SUSA2-64J16 ● SUSA2-64J18 ● SUSA2-64J19 ● SUSA2-64J20 ● SUSA2-64J22 ● SUSA2-64J25 ● SUSA2-64J28 ● SUSA2-64J30 ● SUSA2-64J32 ● SUSA2-64J35 ● SUSA2-64J40 ● SUSA2-64J45 ● SUSA2-64J50	m2	64	S5	15	—	128	132	20	—	—	—
			S5K	15							5 × 2.3
			S5K	16							5 × 2.3
			S5K	18							6 × 2.8
			S5K	19							6 × 2.8
			S5K	20							6 × 2.8
			S5K	22							6 × 2.8
			S5K	25							8 × 3.3
			S5K	28							8 × 3.3
			S5K	30							8 × 3.3
			S5K	32							10 × 3.3
			S5K	35							10 × 3.3
			S5K	40							12 × 3.3
			S5K	45							14 × 3.8
			S5K	50							14 × 3.8
SUSA2-70 ● SUSA2-70J15 ● SUSA2-70J16 ● SUSA2-70J18 ● SUSA2-70J19 ● SUSA2-70J20 ● SUSA2-70J22 ● SUSA2-70J25 ● SUSA2-70J28 ● SUSA2-70J30 ● SUSA2-70J32 ● SUSA2-70J35 ● SUSA2-70J40 ● SUSA2-70J45 ● SUSA2-70J50	m2	70	S5	15	—	140	144	20	—	—	—
			S5K	15							5 × 2.3
			S5K	16							5 × 2.3
			S5K	18							6 × 2.8
			S5K	19							6 × 2.8
			S5K	20							6 × 2.8
			S5K	22							6 × 2.8
			S5K	25							8 × 3.3
			S5K	28							8 × 3.3
			S5K	30							8 × 3.3
			S5K	32							10 × 3.3
			S5K	35							10 × 3.3
			S5K	40							12 × 3.3
			S5K	45							14 × 3.8
			S5K	50							14 × 3.8

[Caution on Product Characteristics]

- ① The allowable torques shown in the table are calculated values according to the assumed usage conditions. Please see page 35 for more details.
- ② The backlash values shown in the table are the theoretical values for the backlash in the normal direction of a pair of identical gears in mesh.

[Caution on Secondary Operations]

- ① Please read "Caution on Performing Secondary Operations" (Page 36) when performing modifications and/or secondary operations for safety concerns. Haguruma Kobo, the KHK's system for quick modification of KHK stock gears is also available.
- ② Avoid performing secondary operations that narrow the tooth width as it affects precision and strength.



Stainless Steel Spur Gears

Newly added



Spur Gears

Helical Gears

Internal Gears

Racks

CP Racks & Pinions

Miter Gears

Bevel Gears

Screw Gears

Worm Gear Pair

Bevel Gearboxes

Other Products

Set Screw		Allowable torque (N·m)		Allowable torque (kgf·m)		Backlash (mm)	Weight (kg)	Catalog No. ● : J Series (Available-on-request)
Size	J	Bending strength	Surface durability	Bending strength	Surface durability			
—	—	98.7	18.0	10.1	1.83	0.18~0.36	1.51 1.51 1.50 1.49 1.49 1.49 1.47 1.46 1.44 1.42 1.41 1.38 1.33 1.28 1.22 SUSA2-56 ●SUSA2-56J15 ●SUSA2-56J16 ●SUSA2-56J18 ●SUSA2-56J19 ●SUSA2-56J20 ●SUSA2-56J22 ●SUSA2-56J25 ●SUSA2-56J28 ●SUSA2-56J30 ●SUSA2-56J32 ●SUSA2-56J35 ●SUSA2-56J40 ●SUSA2-56J45 ●SUSA2-56J50	
—	—	107	20.8	10.9	2.13	0.18~0.36	1.74 1.73 1.73 1.72 1.72 1.71 1.70 1.68 1.66 1.65 1.63 1.61 1.56 1.51 1.45 SUSA2-60 ●SUSA2-60J15 ●SUSA2-60J16 ●SUSA2-60J18 ●SUSA2-60J19 ●SUSA2-60J20 ●SUSA2-60J22 ●SUSA2-60J25 ●SUSA2-60J28 ●SUSA2-60J30 ●SUSA2-60J32 ●SUSA2-60J35 ●SUSA2-60J40 ●SUSA2-60J45 ●SUSA2-60J50	
—	—	116	23.9	11.8	2.44	0.18~0.36	1.98 1.98 1.97 1.97 1.96 1.96 1.95 1.93 1.91 1.89 1.88 1.85 1.81 1.75 1.69 SUSA2-64 ●SUSA2-64J15 ●SUSA2-64J16 ●SUSA2-64J18 ●SUSA2-64J19 ●SUSA2-64J20 ●SUSA2-64J22 ●SUSA2-64J25 ●SUSA2-64J28 ●SUSA2-64J30 ●SUSA2-64J32 ●SUSA2-64J35 ●SUSA2-64J40 ●SUSA2-64J45 ●SUSA2-64J50	
—	—	128	29.0	13.1	2.96	0.18~0.36	2.37 2.37 2.37 2.36 2.35 2.35 2.34 2.32 2.30 2.29 2.27 2.25 2.20 2.15 2.09 SUSA2-70 ●SUSA2-70J15 ●SUSA2-70J16 ●SUSA2-70J18 ●SUSA2-70J19 ●SUSA2-70J20 ●SUSA2-70J22 ●SUSA2-70J25 ●SUSA2-70J28 ●SUSA2-70J30 ●SUSA2-70J32 ●SUSA2-70J35 ●SUSA2-70J40 ●SUSA2-70J45 ●SUSA2-70J50	

[Caution on J series] ① As available-on-request products, requires a lead-time for shipping within 3 working-days (excludes the day ordered), after placing an order. Please allow additional shipping time to get to your local distributor.

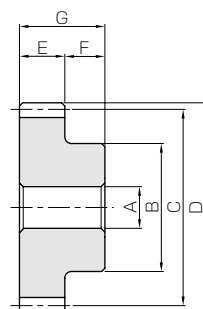
② Number of products we can process for one order is 1 to 20 units. For quantities of 21 or more pieces, we need to quote price and lead time.

③ Keyways are made according to JIS B1301 standards, Js 9 tolerance.



Specifications	
Precision grade	JIS grade N8 (JIS B1702-1: 1998) * JIS grade 4 (JIS B1702: 1976)
Gear teeth	Standard full depth
Pressure angle	20°
Material	SUS303
Heat treatment	—
Tooth hardness	less than 187HB

* The precision grade of J Series products is equivalent to the value shown in the table.



S1

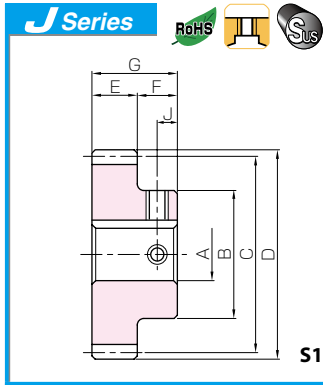
Catalog No. ● : J Series (Available-on-request)	Module	No. of teeth	Shape	Bore	Hub dia.	Pitch dia.	Outside dia.	Face width	Hub width	Total length	Keyway	
				A _{H7}	B	C	D	E	F	G	Width×Depth	
SUS2.5-15 ● SUS2.5-15J15 ● SUS2.5-15J16	m2.5	15	S1	15	30	37.5	42.5	25	18	43	—	
			S1K	15							5 × 2.3	
			S1K	16							5 × 2.3	
		SUS2.5-16 ● SUS2.5-16J15 ● SUS2.5-16J16	16	S1	15	32	40	45	25	18	43	—
				S1K	15							5 × 2.3
				S1K	16							5 × 2.3
		SUS2.5-18 ● SUS2.5-18J15 ● SUS2.5-18J16 ● SUS2.5-18J18 ● SUS2.5-18J19 ● SUS2.5-18J20 ● SUS2.5-18J22	18	S1	15	38	45	50	25	18	43	—
				S1K	15							5 × 2.3
				S1K	16							5 × 2.3
				S1K	18							6 × 2.8
S1K	19			6 × 2.8								
S1K	20			6 × 2.8								
SUS2.5-20 ● SUS2.5-20J15 ● SUS2.5-20J16 ● SUS2.5-20J18 ● SUS2.5-20J19 ● SUS2.5-20J20 ● SUS2.5-20J22	20	S1	15	40	50	55	25	18	43	—		
		S1K	15							5 × 2.3		
		S1K	16							5 × 2.3		
		S1K	18							6 × 2.8		
		S1K	19							6 × 2.8		
		S1K	20							6 × 2.8		
SUS2.5-22 ● SUS2.5-22J15 ● SUS2.5-22J16 ● SUS2.5-22J18 ● SUS2.5-22J19 ● SUS2.5-22J20 ● SUS2.5-22J22 ● SUS2.5-22J25	22	S1	15	44	55	60	25	18	43	—		
		S1K	15							5 × 2.3		
		S1K	16							5 × 2.3		
		S1K	18							6 × 2.8		
		S1K	19							6 × 2.8		
		S1K	20							6 × 2.8		
SUS2.5-24 ● SUS2.5-24J15 ● SUS2.5-24J16 ● SUS2.5-24J18 ● SUS2.5-24J19 ● SUS2.5-24J20 ● SUS2.5-24J22 ● SUS2.5-24J25 ● SUS2.5-24J28	24	S1	15	48	60	65	25	18	43	—		
		S1K	15							5 × 2.3		
		S1K	16							5 × 2.3		
		S1K	18							6 × 2.8		
		S1K	19							6 × 2.8		
		S1K	20							6 × 2.8		
SUS2.5-25 ● SUS2.5-25J15 ● SUS2.5-25J16 ● SUS2.5-25J18 ● SUS2.5-25J19 ● SUS2.5-25J20 ● SUS2.5-25J22 ● SUS2.5-25J25 ● SUS2.5-25J28 ● SUS2.5-25J30	25	S1	15	50	62.5	67.5	25	18	43	—		
		S1K	15							5 × 2.3		
		S1K	16							5 × 2.3		
		S1K	18							6 × 2.8		
		S1K	19							6 × 2.8		
		S1K	20							6 × 2.8		
SUS2.5-28 ● SUS2.5-28J15 ● SUS2.5-28J16 ● SUS2.5-28J18 ● SUS2.5-28J19 ● SUS2.5-28J20 ● SUS2.5-28J22 ● SUS2.5-28J25 ● SUS2.5-28J28 ● SUS2.5-28J30 ● SUS2.5-28J32 ● SUS2.5-28J35	28	S1	15	60	70	75	25	18	43	—		
		S1K	15							5 × 2.3		
		S1K	16							5 × 2.3		
		S1K	18							6 × 2.8		
		S1K	19							6 × 2.8		
		S1K	20							6 × 2.8		
		S1K	22							6 × 2.8		
		S1K	25							8 × 3.3		
		S1K	28							8 × 3.3		
		S1K	30							8 × 3.3		

[Caution on Product Characteristics]

- ① The allowable torques shown in the table are calculated values according to the assumed usage conditions. Please see page 35 for more details.
- ② The backlash values shown in the table are the theoretical values for the backlash in the normal direction of a pair of identical gears in mesh.

[Caution on Secondary Operations]

- ① Please read "Caution on Performing Secondary Operations" (Page 36) when performing modifications and/or secondary operations for safety concerns. Haguruma Kobo, the KHK's system for quick modification of KHK stock gears is also available.
- ② Avoid performing secondary operations that narrow the tooth width as it affects precision and strength.



Stainless Steel Spur Gears

Newly added



Set Screw		Allowable torque (N·m)		Allowable torque (kgf·m)		Backlash (mm)	Weight (kg)	Catalog No. ● : J Series (Available-on-request)				
Size	J	Bending strength	Surface durability	Bending strength	Surface durability							
—	—							SUS2.5-15				
M4	9	31.9	2.11	3.25	0.21	0.14~0.28	0.26	● SUS2.5-15J15				
M4	9						0.25	● SUS2.5-15J16				
							0.24					
—	—							SUS2.5-16				
M4	9	35.3	2.44	3.6	0.25	0.14~0.28	0.30	● SUS2.5-16J15				
M4	9						0.29	● SUS2.5-16J16				
							0.29					
—	—							SUS2.5-18				
M4	9	42.4	3.18	4.32	0.32	0.14~0.28	0.41	● SUS2.5-18J15				
M4	9						0.40	● SUS2.5-18J16				
M4	9						0.40	● SUS2.5-18J16				
M5	9						0.38	● SUS2.5-18J18				
M5	9						0.37	● SUS2.5-18J19				
M5	9						0.36	● SUS2.5-18J20				
M5	9						0.33	● SUS2.5-18J22				
—	—							SUS2.5-20				
M4	9	49.6	4.02	5.06	0.41	0.14~0.28	0.50	● SUS2.5-20J15				
M4	9						0.49	● SUS2.5-20J16				
M4	9						0.49	● SUS2.5-20J16				
M5	9						0.46	● SUS2.5-20J18				
M5	9						0.46	● SUS2.5-20J19				
M5	9						0.45	● SUS2.5-20J20				
M5	9						0.42	● SUS2.5-20J22				
—	—							SUS2.5-22				
M4*	9	57.0	4.96	5.81	0.51	0.16~0.34	0.62	● SUS2.5-22J15				
M4	9						0.61	● SUS2.5-22J16				
M4	9						0.60	● SUS2.5-22J16				
M5	9						0.58	● SUS2.5-22J18				
M5	9						0.57	● SUS2.5-22J19				
M5	9						0.56	● SUS2.5-22J20				
M5	9						0.54	● SUS2.5-22J22				
M5	9						0.50	● SUS2.5-22J25				
M6	9											
—	—							SUS2.5-24				
M4*	9	64.5	6.01	6.58	0.61	0.16~0.34	0.75	● SUS2.5-24J15				
M4*	9						0.74	● SUS2.5-24J16				
M4*	9						0.73	● SUS2.5-24J16				
M5	9						0.71	● SUS2.5-24J18				
M5	9						0.70	● SUS2.5-24J19				
M5	9						0.69	● SUS2.5-24J20				
M5	9						0.67	● SUS2.5-24J22				
M5	9						0.63	● SUS2.5-24J25				
M6	9						0.59	● SUS2.5-24J28				
—	—							SUS2.5-25				
M4*	9	68.3	6.58	6.96	0.67	0.16~0.34	0.81	● SUS2.5-25J15				
M4*	9						0.81	● SUS2.5-25J16				
M4*	9						0.80	● SUS2.5-25J16				
M5	9						0.78	● SUS2.5-25J18				
M5	9						0.77	● SUS2.5-25J19				
M5	9						0.76	● SUS2.5-25J20				
M5	9						0.74	● SUS2.5-25J22				
M5	9						0.69	● SUS2.5-25J25				
M6	9						0.65	● SUS2.5-25J28				
M6	9						0.62	● SUS2.5-25J30				
—	—							SUS2.5-28				
M4*	9	79.8	8.34	8.14	0.85	0.16~0.34	1.09	● SUS2.5-28J15				
M4*	9						1.08	● SUS2.5-28J16				
M4*	9						1.07	● SUS2.5-28J16				
M5*	9						1.05	● SUS2.5-28J18				
M5*	9						1.04	● SUS2.5-28J19				
M5*	9						1.03	● SUS2.5-28J20				
M5*	9						1.01	● SUS2.5-28J22				
M5*	9						0.97	● SUS2.5-28J25				
M6	9						0.92	● SUS2.5-28J28				
M6	9						0.89	● SUS2.5-28J30				
M6	9						0.86	● SUS2.5-28J32				
M8	9						0.80	● SUS2.5-28J35				
M8	9											

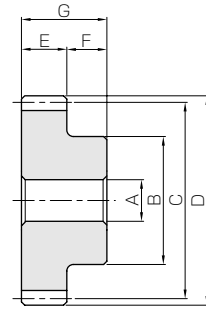
[Caution on J series]

- ① As available-on-request products, requires a lead-time for shipping within 3 working-days (excludes the day ordered), after placing an order. Please allow additional shipping time to get to your local distributor.
- ② Number of products we can process for one order is 1 to 20 units. For quantities of 21 or more pieces, we need to quote price and lead time.
- ③ Keyways are made according to JIS B1301 standards, Js 9 tolerance.
- ④ Certain products which would otherwise have a very long tapped hole are conterbored to reduce the length of the tap. (Products marked with "*" are tap size).
- ⑤ For products having a tapped hole, a set screw is included.



Specifications	
Precision grade	JIS grade N8 (JIS B1702-1: 1998) * JIS grade 4 (JIS B1702: 1976)
Gear teeth	Standard full depth
Pressure angle	20°
Material	SUS303
Heat treatment	—
Tooth hardness	less than 187HB

* The precision grade of J Series products is equivalent to the value shown in the table.



S1

Catalog No. ● : J Series (Available-on-request)	Module	No. of teeth	Shape	Bore	Hub dia.	Pitch dia.	Outside dia.	Face width	Hub width	Total length	Keyway
				A _{H7}	B	C	D	E	F	G	Width×Depth
SUS2.5-30	m2.5	30	S1	15	65	75	80	25	18	43	—
● SUS2.5-30J15			S1K	15							5 x 2.3
● SUS2.5-30J16			S1K	16							5 x 2.3
● SUS2.5-30J18			S1K	18							6 x 2.8
● SUS2.5-30J19			S1K	19							6 x 2.8
● SUS2.5-30J20			S1K	20							6 x 2.8
● SUS2.5-30J22			S1K	22							6 x 2.8
● SUS2.5-30J25			S1K	25							8 x 3.3
● SUS2.5-30J28			S1K	28							8 x 3.3
● SUS2.5-30J30			S1K	30							8 x 3.3
● SUS2.5-30J32			S1K	32							10 x 3.3
● SUS2.5-30J35			S1K	35							10 x 3.3

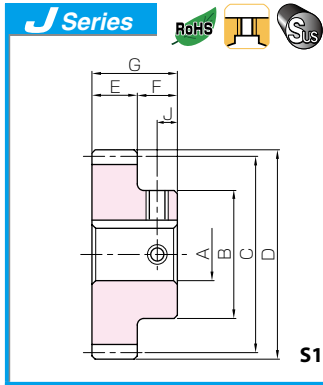
[Caution on Product Characteristics]

- ① The allowable torques shown in the table are calculated values according to the assumed usage conditions. Please see page 35 for more details.
- ② The backlash values shown in the table are the theoretical values for the backlash in the normal direction of a pair of identical gears in mesh.

[Caution on Secondary Operations]

- ① Please read "Caution on Performing Secondary Operations" (Page 36) when performing modifications and/or secondary operations for safety concerns. Haguruma Kobo, the KHK's system for quick modification of KHK stock gears is also available.
- ② Avoid performing secondary operations that narrow the tooth width as it affects precision and strength.

- Spur Gears
- Helical Gears
- Internal Gears
- Racks
- CP Racks & Pinions
- Miter Gears
- Bevel Gears
- Screw Gears
- Worm Gear Pair
- Bevel Gearboxes
- Other Products



Stainless Steel Spur Gears

Newly added



Set Screw		Allowable torque (N·m)		Allowable torque (kgf·m)		Backlash (mm)	Weight (kg)	Catalog No. ● : J Series (Available-on-request)
Size	J	Bending strength	Surface durability	Bending strength	Surface durability			
—	—	87.6	9.65	8.93	0.98	0.16~0.34	1.27	SUS2.5-30
M4*	9							● SUS2.5-30J15
M4*	9							● SUS2.5-30J16
M5*	9							● SUS2.5-30J18
M5*	9							● SUS2.5-30J19
M5*	9							● SUS2.5-30J20
M5*	9							● SUS2.5-30J22
M6	9							● SUS2.5-30J25
M6	9							● SUS2.5-30J28
M6	9							● SUS2.5-30J30
M8	9							● SUS2.5-30J32
M8	9	● SUS2.5-30J35						

[Caution on J series]

- ① As available-on-request products, requires a lead-time for shipping within **3 working-days (excludes the day ordered)**, after placing an order. Please allow additional shipping time to get to your local distributor.
- ② Number of products we can process for one order is **1 to 20 units**. For quantities of 21 or more pieces, we need to quote price and lead time.
- ③ Keyways are made according to JIS B1301 standards, Js 9 tolerance.
- ④ Certain products which would otherwise have a very long tapped hole are conterbored to reduce the length of the tap. (Products marked with " * " are tap size).
- ⑤ For products having a tapped hole, a set screw is included.

Spur Gears

Helical Gears

Internal Gears

Racks

CP Racks & Pinions

Miter Gears

Bevel Gears

Screw Gears

Worm Gear Pair

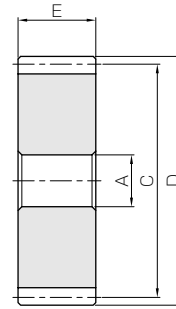
Bevel Gearboxes

Other Products



Specifications	
Precision grade	JIS grade N8 (JIS B1702-1: 1998) * JIS grade 4 (JIS B1702: 1976)
Gear teeth	Standard full depth
Pressure angle	20°
Material	SUS303
Heat treatment	—
Tooth hardness	less than 187HB

* The precision grade of J Series products is equivalent to the value shown in the table.

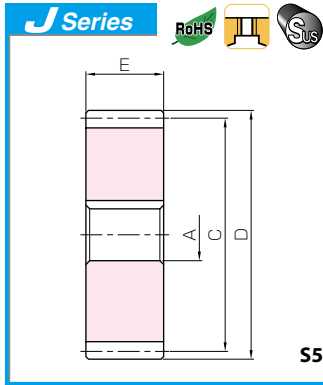


S5

Catalog No. ● : J Series (Available-on-request)	Module	No. of teeth	Shape	Bore	Hub dia.	Pitch dia.	Outside dia.	Face width	Hub width	Total length	Keyway						
				A _{H7}	B	C	D	E	F	G	Width×Depth						
SUSA2.5-32 ● SUSA2.5-32J15 ● SUSA2.5-32J16 ● SUSA2.5-32J18 ● SUSA2.5-32J19 ● SUSA2.5-32J20 ● SUSA2.5-32J22 ● SUSA2.5-32J25 ● SUSA2.5-32J28 ● SUSA2.5-32J30 ● SUSA2.5-32J32 ● SUSA2.5-32J35	m2.5	32	S5	15	—	80	85	25	—	—	—						
S5K			15	5 × 2.3													
S5K			16	5 × 2.3													
S5K			18	6 × 2.8													
S5K			19	6 × 2.8													
S5K			20	6 × 2.8													
S5K			22	6 × 2.8													
S5K			25	8 × 3.3													
S5K			28	8 × 3.3													
S5K			30	8 × 3.3													
S5K			32	10 × 3.3													
S5K			35	10 × 3.3													
SUSA2.5-35 ● SUSA2.5-35J15 ● SUSA2.5-35J16 ● SUSA2.5-35J18 ● SUSA2.5-35J19 ● SUSA2.5-35J20 ● SUSA2.5-35J22 ● SUSA2.5-35J25 ● SUSA2.5-35J28 ● SUSA2.5-35J30 ● SUSA2.5-35J32 ● SUSA2.5-35J35 ● SUSA2.5-35J40		35	S5	15	—	87.5	92.5	25	—	—	—						
S5K			15	5 × 2.3													
S5K			16	5 × 2.3													
S5K			18	6 × 2.8													
S5K			19	6 × 2.8													
S5K			20	6 × 2.8													
S5K			22	6 × 2.8													
S5K			25	8 × 3.3													
S5K			28	8 × 3.3													
S5K			30	8 × 3.3													
S5K			32	10 × 3.3													
S5K			35	10 × 3.3													
S5K	40	12 × 3.3															
SUSA2.5-36 ● SUSA2.5-36J15 ● SUSA2.5-36J16 ● SUSA2.5-36J18 ● SUSA2.5-36J19 ● SUSA2.5-36J20 ● SUSA2.5-36J22 ● SUSA2.5-36J25 ● SUSA2.5-36J28 ● SUSA2.5-36J30 ● SUSA2.5-36J32 ● SUSA2.5-36J35 ● SUSA2.5-36J40	36	S5	15	—	90	95	25	—	—	—							
S5K		15	5 × 2.3														
S5K		16	5 × 2.3														
S5K		18	6 × 2.8														
S5K		19	6 × 2.8														
S5K		20	6 × 2.8														
S5K		22	6 × 2.8														
S5K		25	8 × 3.3														
S5K		28	8 × 3.3														
S5K		30	8 × 3.3														
S5K		32	10 × 3.3														
S5K		35	10 × 3.3														
S5K	40	12 × 3.3															
SUSA2.5-40 ● SUSA2.5-40J20 ● SUSA2.5-40J22 ● SUSA2.5-40J25 ● SUSA2.5-40J28 ● SUSA2.5-40J30 ● SUSA2.5-40J32 ● SUSA2.5-40J35 ● SUSA2.5-40J40 ● SUSA2.5-40J45	40	S5	20	—	100	105	25	—	—	—							
S5K		20	6 × 2.8														
S5K		22	6 × 2.8														
S5K		25	8 × 3.3														
S5K		28	8 × 3.3														
S5K		30	8 × 3.3														
S5K		32	10 × 3.3														
S5K		35	10 × 3.3														
S5K		40	12 × 3.3														
S5K		45	14 × 3.8														
SUSA2.5-42 ● SUSA2.5-42J20 ● SUSA2.5-42J22 ● SUSA2.5-42J25 ● SUSA2.5-42J28 ● SUSA2.5-42J30 ● SUSA2.5-42J32 ● SUSA2.5-42J35 ● SUSA2.5-42J40 ● SUSA2.5-42J45		42	S5							20	—	105	110	25	—	—	—
S5K			20							6 × 2.8							
S5K	22		6 × 2.8														
S5K	25		8 × 3.3														
S5K	28		8 × 3.3														
S5K	30		8 × 3.3														
S5K	32		10 × 3.3														
S5K	35		10 × 3.3														
S5K	40		12 × 3.3														
S5K	45		14 × 3.8														

(Caution on Product Characteristics) ① The allowable torques shown in the table are calculated values according to the assumed usage conditions. Please see page 35 for more details.
② The backlash values shown in the table are the theoretical values for the backlash in the normal direction of a pair of identical gears in mesh.

(Caution on Secondary Operations) ① Please read “Caution on Performing Secondary Operations” (Page 36) when performing modifications and/or secondary operations for safety concerns. Haguruma Kobo, the KHK’s system for quick modification of KHK stock gears is also available.
② Avoid performing secondary operations that narrow the tooth width as it affects precision and strength.



Stainless Steel Spur Gears

Newly added



Set Screw		Allowable torque (N·m)		Allowable torque (kgf·m)		Backlash (mm)	Weight (kg)	Catalog No. ● : J Series (Available-on-request)
Size	J	Bending strength	Surface durability	Bending strength	Surface durability			
—	—	95.4	11.1	9.73	1.13	0.16~0.34	0.95 0.94 0.94 0.93 0.92 0.92 0.90 0.88 0.85 0.84 0.82 0.79	SUSA2.5-32 ● SUSA2.5-32J15 ● SUSA2.5-32J16 ● SUSA2.5-32J18 ● SUSA2.5-32J19 ● SUSA2.5-32J20 ● SUSA2.5-32J22 ● SUSA2.5-32J25 ● SUSA2.5-32J28 ● SUSA2.5-32J30 ● SUSA2.5-32J32 ● SUSA2.5-32J35
—	—	107	13.4	10.9	1.36	0.16~0.34	1.14 1.14 1.13 1.12 1.11 1.11 1.10 1.07 1.05 1.03 1.01 0.98 0.92	SUSA2.5-35 ● SUSA2.5-35J15 ● SUSA2.5-35J16 ● SUSA2.5-35J18 ● SUSA2.5-35J19 ● SUSA2.5-35J20 ● SUSA2.5-35J22 ● SUSA2.5-35J25 ● SUSA2.5-35J28 ● SUSA2.5-35J30 ● SUSA2.5-35J32 ● SUSA2.5-35J35 ● SUSA2.5-35J40
—	—	111	14.2	11.3	1.45	0.16~0.34	1.21 1.20 1.20 1.19 1.18 1.18 1.16 1.14 1.12 1.10 1.08 1.05 0.99	SUSA2.5-36 ● SUSA2.5-36J15 ● SUSA2.5-36J16 ● SUSA2.5-36J18 ● SUSA2.5-36J19 ● SUSA2.5-36J20 ● SUSA2.5-36J22 ● SUSA2.5-36J25 ● SUSA2.5-36J28 ● SUSA2.5-36J30 ● SUSA2.5-36J32 ● SUSA2.5-36J35 ● SUSA2.5-36J40
—	—	127	17.7	13.0	1.81	0.16~0.34	1.47 1.47 1.45 1.43 1.41 1.39 1.37 1.34 1.28 1.21	SUSA2.5-40 ● SUSA2.5-40J20 ● SUSA2.5-40J22 ● SUSA2.5-40J25 ● SUSA2.5-40J28 ● SUSA2.5-40J30 ● SUSA2.5-40J32 ● SUSA2.5-40J35 ● SUSA2.5-40J40 ● SUSA2.5-40J45
—	—	135	19.6	13.8	2.00	0.18~0.40	1.63 1.62 1.61 1.59 1.56 1.55 1.53 1.49 1.44 1.37	SUSA2.5-42 ● SUSA2.5-42J20 ● SUSA2.5-42J22 ● SUSA2.5-42J25 ● SUSA2.5-42J28 ● SUSA2.5-42J30 ● SUSA2.5-42J32 ● SUSA2.5-42J35 ● SUSA2.5-42J40 ● SUSA2.5-42J45

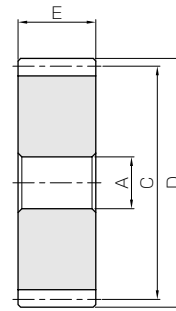
- [Caution on J series]
- ① As available-on-request products, requires a lead-time for shipping within 3 working-days (excludes the day ordered), after placing an order. Please allow additional shipping time to get to your local distributor.
 - ② Number of products we can process for one order is 1 to 20 units. For quantities of 21 or more pieces, we need to quote price and lead time.
 - ③ Keyways are made according to JIS B1301 standards, Js 9 tolerance.

- Spur Gears
- Helical Gears
- Internal Gears
- Racks
- CP Racks & Pinions
- Miter Gears
- Bevel Gears
- Screw Gears
- Worm Gear Pair
- Bevel Gearboxes
- Other Products



Specifications	
Precision grade	JIS grade N8 (JIS B1702-1: 1998) * JIS grade 4 (JIS B1702: 1976)
Gear teeth	Standard full depth
Pressure angle	20°
Material	SUS303
Heat treatment	—
Tooth hardness	less than 187HB

* The precision grade of J Series products is equivalent to the value shown in the table.



S5

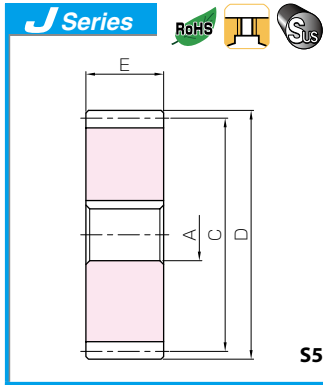
Catalog No. ● : J Series (Available-on-request)	Module	No. of teeth	Shape	Bore	Hub dia.	Pitch dia.	Outside dia.	Face width	Hub width	Total length	Keyway
				A _{H7}	B	C	D	E	F	G	Width×Depth
SUSA2.5-45 ● SUSA2.5-45J20 ● SUSA2.5-45J22 ● SUSA2.5-45J25 ● SUSA2.5-45J28 ● SUSA2.5-45J30 ● SUSA2.5-45J32 ● SUSA2.5-45J35 ● SUSA2.5-45J40 ● SUSA2.5-45J45 ● SUSA2.5-45J50	m2.5	45	S5	20	—	112.5	117.5	25	—	—	—
S5K			20	6 × 2.8							
S5K			22	6 × 2.8							
S5K			25	8 × 3.3							
S5K			28	8 × 3.3							
S5K			30	8 × 3.3							
S5K			32	10 × 3.3							
S5K			35	10 × 3.3							
S5K			40	12 × 3.3							
S5K			45	14 × 3.8							
S5K		50	14 × 3.8								
SUSA2.5-48 ● SUSA2.5-48J20 ● SUSA2.5-48J22 ● SUSA2.5-48J25 ● SUSA2.5-48J28 ● SUSA2.5-48J30 ● SUSA2.5-48J32 ● SUSA2.5-48J35 ● SUSA2.5-48J40 ● SUSA2.5-48J45 ● SUSA2.5-48J50		48	S5	20	—	120	125	25	—	—	—
S5K			20	6 × 2.8							
S5K			22	6 × 2.8							
S5K			25	8 × 3.3							
S5K			28	8 × 3.3							
S5K			30	8 × 3.3							
S5K			32	10 × 3.3							
S5K			35	10 × 3.3							
S5K			40	12 × 3.3							
S5K			45	14 × 3.8							
S5K		50	14 × 3.8								
SUSA2.5-50 ● SUSA2.5-50J20 ● SUSA2.5-50J22 ● SUSA2.5-50J25 ● SUSA2.5-50J28 ● SUSA2.5-50J30 ● SUSA2.5-50J32 ● SUSA2.5-50J35 ● SUSA2.5-50J40 ● SUSA2.5-50J45 ● SUSA2.5-50J50		50	S5	20	—	125	130	25	—	—	—
S5K			20	6 × 2.8							
S5K	22		6 × 2.8								
S5K	25		8 × 3.3								
S5K	28		8 × 3.3								
S5K	30		8 × 3.3								
S5K	32		10 × 3.3								
S5K	35		10 × 3.3								
S5K	40		12 × 3.3								
S5K	45		14 × 3.8								
S5K	50	14 × 3.8									
SUSA2.5-55 ● SUSA2.5-55J20 ● SUSA2.5-55J22 ● SUSA2.5-55J25 ● SUSA2.5-55J28 ● SUSA2.5-55J30 ● SUSA2.5-55J32 ● SUSA2.5-55J35 ● SUSA2.5-55J40 ● SUSA2.5-55J45 ● SUSA2.5-55J50	55	S5	20	—	137.5	142.5	25	—	—	—	
S5K		20	6 × 2.8								
S5K		22	6 × 2.8								
S5K		25	8 × 3.3								
S5K		28	8 × 3.3								
S5K		30	8 × 3.3								
S5K		32	10 × 3.3								
S5K		35	10 × 3.3								
S5K		40	12 × 3.3								
S5K		45	14 × 3.8								
S5K	50	14 × 3.8									
SUSA2.5-56 ● SUSA2.5-56J20 ● SUSA2.5-56J22 ● SUSA2.5-56J25 ● SUSA2.5-56J28 ● SUSA2.5-56J30 ● SUSA2.5-56J32 ● SUSA2.5-56J35 ● SUSA2.5-56J40 ● SUSA2.5-56J45 ● SUSA2.5-56J50	56	S5	20	—	140	145	25	—	—	—	
S5K		20	6 × 2.8								
S5K		22	6 × 2.8								
S5K		25	8 × 3.3								
S5K		28	8 × 3.3								
S5K		30	8 × 3.3								
S5K		32	10 × 3.3								
S5K		35	10 × 3.3								
S5K		40	12 × 3.3								
S5K		45	14 × 3.8								
S5K	50	14 × 3.8									

[Caution on Product Characteristics]

- ① The allowable torques shown in the table are calculated values according to the assumed usage conditions. Please see page 35 for more details.
- ② The backlash values shown in the table are the theoretical values for the backlash in the normal direction of a pair of identical gears in mesh.

[Caution on Secondary Operations]

- ① Please read "Caution on Performing Secondary Operations" (Page 36) when performing modifications and/or secondary operations for safety concerns. Haguruma Kobo, the KHK's system for quick modification of KHK stock gears is also available.
- ② Avoid performing secondary operations that narrow the tooth width as it affects precision and strength.



Stainless Steel Spur Gears

Newly added



Set Screw		Allowable torque (N·m)		Allowable torque (kgf·m)		Backlash (mm)	Weight (kg)	Catalog No. ● : J Series (Available-on-request)							
Size	J	Bending strength	Surface durability	Bending strength	Surface durability										
—	—	148	22.7	15.0	2.31	0.18~0.40	1.88	SUSA2.5-45							
							1.87	●SUSA2.5-45J20							
							1.86	●SUSA2.5-45J22							
							1.84	●SUSA2.5-45J25							
							1.81	●SUSA2.5-45J28							
							1.80	●SUSA2.5-45J30							
							1.78	●SUSA2.5-45J32							
							1.74	●SUSA2.5-45J35							
							1.69	●SUSA2.5-45J40							
							1.62	●SUSA2.5-45J45							
							1.55	●SUSA2.5-45J50							
							—	—	160	26.1	16.3	2.66	0.18~0.40	2.14	SUSA2.5-48
														2.14	●SUSA2.5-48J20
2.13	●SUSA2.5-48J22														
2.10	●SUSA2.5-48J25														
2.08	●SUSA2.5-48J28														
2.06	●SUSA2.5-48J30														
2.04	●SUSA2.5-48J32														
2.01	●SUSA2.5-48J35														
1.95	●SUSA2.5-48J40														
1.88	●SUSA2.5-48J45														
1.81	●SUSA2.5-48J50														
—	—	168	28.4	17.1	2.90	0.18~0.40	2.33	SUSA2.5-50							
							2.33	●SUSA2.5-50J20							
							2.32	●SUSA2.5-50J22							
							2.29	●SUSA2.5-50J25							
							2.27	●SUSA2.5-50J28							
							2.25	●SUSA2.5-50J30							
							2.23	●SUSA2.5-50J32							
							2.20	●SUSA2.5-50J35							
							2.14	●SUSA2.5-50J40							
							2.07	●SUSA2.5-50J45							
2.00	●SUSA2.5-50J50														
—	—	189	34.9	19.2	3.56	0.18~0.40	2.83	SUSA2.5-55							
							2.83	●SUSA2.5-55J20							
							2.82	●SUSA2.5-55J22							
							2.79	●SUSA2.5-55J25							
							2.77	●SUSA2.5-55J28							
							2.75	●SUSA2.5-55J30							
							2.73	●SUSA2.5-55J32							
							2.70	●SUSA2.5-55J35							
							2.64	●SUSA2.5-55J40							
							2.58	●SUSA2.5-55J45							
2.50	●SUSA2.5-55J50														
—	—	193	36.2	19.6	3.70	0.18~0.40	2.94	SUSA2.5-56							
							2.94	●SUSA2.5-56J20							
							2.92	●SUSA2.5-56J22							
							2.90	●SUSA2.5-56J25							
							2.88	●SUSA2.5-56J28							
							2.86	●SUSA2.5-56J30							
							2.84	●SUSA2.5-56J32							
							2.81	●SUSA2.5-56J35							
							2.75	●SUSA2.5-56J40							
							2.68	●SUSA2.5-56J45							
2.61	●SUSA2.5-56J50														

[Caution on J series]

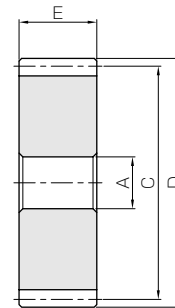
- ① As available-on-request products, requires a lead-time for shipping within 3 working-days (excludes the day ordered), after placing an order. Please allow additional shipping time to get to your local distributor.
- ② Number of products we can process for one order is 1 to 20 units. For quantities of 21 or more pieces, we need to quote price and lead time.
- ③ Keyways are made according to JIS B1301 standards, Js 9 tolerance.

- Spur Gears
- Helical Gears
- Internal Gears
- Racks
- CP Racks & Pinions
- Miter Gears
- Bevel Gears
- Screw Gears
- Worm Gear Pair
- Bevel Gearboxes
- Other Products



Specifications	
Precision grade	JIS grade N8 (JIS B1702-1: 1998) * JIS grade 4 (JIS B1702: 1976)
Gear teeth	Standard full depth
Pressure angle	20°
Material	SUS303
Heat treatment	—
Tooth hardness	less than 187HB

* The precision grade of J Series products is equivalent to the value shown in the table.



S5

Catalog No. ● : J Series (Available-on-request)	Module	No. of teeth	Shape	Bore	Hub dia.	Pitch dia.	Outside dia.	Face width	Hub width	Total length	Keyway							
				A _{H7}	B	C	D	E	F	G	Width×Depth							
SUSA2.5-60	m2.5	60	S5	20	—	150	155	25	—	—	—							
● SUSA2.5-60J20			S5K	20							6 × 2.8							
● SUSA2.5-60J22			S5K	22							6 × 2.8							
● SUSA2.5-60J25			S5K	25							8 × 3.3							
● SUSA2.5-60J28			S5K	28							8 × 3.3							
● SUSA2.5-60J30			S5K	30							8 × 3.3							
● SUSA2.5-60J32			S5K	32							10 × 3.3							
● SUSA2.5-60J35			S5K	35							10 × 3.3							
● SUSA2.5-60J40			S5K	40							12 × 3.3							
● SUSA2.5-60J45			S5K	45							14 × 3.8							
● SUSA2.5-60J50			S5K	50							14 × 3.8							
SUSA2.5-64			64	S5							20	—	160	165	25	—	—	—
● SUSA2.5-64J20				S5K							20							6 × 2.8
● SUSA2.5-64J22				S5K							22							6 × 2.8
● SUSA2.5-64J25	S5K	25		8 × 3.3														
● SUSA2.5-64J28	S5K	28		8 × 3.3														
● SUSA2.5-64J30	S5K	30		8 × 3.3														
● SUSA2.5-64J32	S5K	32		10 × 3.3														
● SUSA2.5-64J35	S5K	35		10 × 3.3														
● SUSA2.5-64J40	S5K	40		12 × 3.3														
● SUSA2.5-64J45	S5K	45		14 × 3.8														
● SUSA2.5-64J50	S5K	50	14 × 3.8															

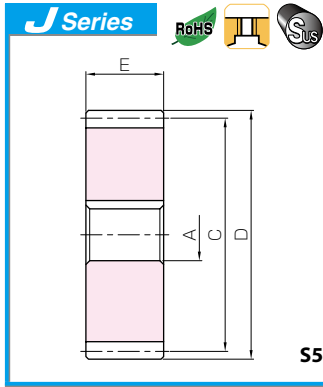
[Caution on Product Characteristics]

- ① The allowable torques shown in the table are calculated values according to the assumed usage conditions. Please see page 35 for more details.
- ② The backlash values shown in the table are the theoretical values for the backlash in the normal direction of a pair of identical gears in mesh.

[Caution on Secondary Operations]

- ① Please read "Caution on Performing Secondary Operations" (Page 36) when performing modifications and/or secondary operations for safety concerns. Haguruma Kobo, the KHK's system for quick modification of KHK stock gears is also available.
- ② Avoid performing secondary operations that narrow the tooth width as it affects precision and strength.

Spur Gears
Helical Gears
Internal Gears
Racks
CP Racks & Pinions
Miter Gears
Bevel Gears
Screw Gears
Worm Gear Pair
Bevel Gearboxes
Other Products



Stainless Steel Spur Gears

Newly added



Set Screw		Allowable torque (N·m)		Allowable torque (kgf·m)		Backlash (mm)	Weight (kg)	Catalog No. ● : J Series (Available-on-request)
Size	J	Bending strength	Surface durability	Bending strength	Surface durability			
—	—	209	42.0	21.3	4.28	0.18~0.40	3.38 3.38 3.37 3.35 3.32 3.30 3.28 3.25 3.19 3.13 3.05 SUSA2.5-60 ● SUSA2.5-60J20 ● SUSA2.5-60J22 ● SUSA2.5-60J25 ● SUSA2.5-60J28 ● SUSA2.5-60J30 ● SUSA2.5-60J32 ● SUSA2.5-60J35 ● SUSA2.5-60J40 ● SUSA2.5-60J45 ● SUSA2.5-60J50	
—	—	226	48.2	23.0	4.91	0.18~0.40	3.86 3.86 3.84 3.82 3.80 3.78 3.76 3.73 3.67 3.60 3.53 SUSA2.5-64 ● SUSA2.5-64J20 ● SUSA2.5-64J22 ● SUSA2.5-64J25 ● SUSA2.5-64J28 ● SUSA2.5-64J30 ● SUSA2.5-64J32 ● SUSA2.5-64J35 ● SUSA2.5-64J40 ● SUSA2.5-64J45 ● SUSA2.5-64J50	

[Caution on J series]

- ① As available-on-request products, requires a lead-time for shipping within 3 working-days (excludes the day ordered), after placing an order. Please allow additional shipping time to get to your local distributor.
- ② Number of products we can process for one order is 1 to 20 units. For quantities of 21 or more pieces, we need to quote price and lead time.
- ③ Keyways are made according to JIS B1301 standards, Js 9 tolerance.

Spur Gears

Helical Gears

Internal Gears

Racks

CP Racks & Pinions

Miter Gears

Bevel Gears

Screw Gears

Worm Gear Pair

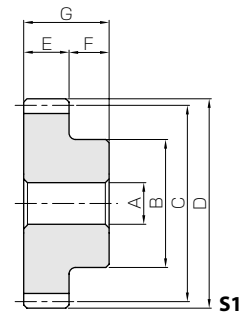
Bevel Gearboxes

Other Products



Specifications	
Precision grade	JIS grade N8 (JIS B1702-1: 1998) * JIS grade 4 (JIS B1702: 1976)
Gear teeth	Standard full depth
Pressure angle	20°
Material	SUS303
Heat treatment	—
Tooth hardness	less than 187HB

* The precision grade of J Series products is equivalent to the value shown in the table.



- Spur Gears
- Helical Gears
- Internal Gears
- Racks
- CP Racks & Pinions
- Miter Gears
- Bevel Gears
- Screw Gears
- Worm Gear Pair
- Bevel Gearboxes
- Other Products

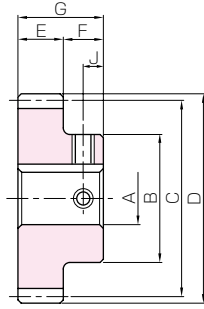
Catalog No. ● : J Series (Available-on-request)	Module	No. of teeth	Shape	Bore	Hub dia.	Pitch dia.	Outside dia.	Face width	Hub width	Total length	Keyway
				A _{H7}	B	C	D	E	F	G	Width×Depth
SUS3-15 ● SUS3-15J15 ● SUS3-15J16 ● SUS3-15J18 ● SUS3-15J19	m3	15	S1	15	36	45	51	30	20	50	—
			S1K	15							5 × 2.3
			S1K	16							5 × 2.3
			S1K	18							6 × 2.8
			S1K	19							6 × 2.8
SUS3-16 ● SUS3-16J15 ● SUS3-16J16 ● SUS3-16J18 ● SUS3-16J19 ● SUS3-16J20 ● SUS3-16J22	m3	16	S1	15	38	48	54	30	20	50	—
			S1K	15							5 × 2.3
			S1K	16							5 × 2.3
			S1K	18							6 × 2.8
			S1K	19							6 × 2.8
			S1K	20							6 × 2.8
SUS3-18 ● SUS3-18J15 ● SUS3-18J16 ● SUS3-18J18 ● SUS3-18J19 ● SUS3-18J20 ● SUS3-18J22	m3	18	S1	15	40	54	60	30	20	50	—
			S1K	15							5 × 2.3
			S1K	16							5 × 2.3
			S1K	18							6 × 2.8
			S1K	19							6 × 2.8
			S1K	20							6 × 2.8
SUS3-20 ● SUS3-20J15 ● SUS3-20J16 ● SUS3-20J18 ● SUS3-20J19 ● SUS3-20J20 ● SUS3-20J22 ● SUS3-20J25 ● SUS3-20J28 ● SUS3-20J30	m3	20	S1	15	50	60	66	30	20	50	—
			S1K	15							5 × 2.3
			S1K	16							5 × 2.3
			S1K	18							6 × 2.8
			S1K	19							6 × 2.8
			S1K	20							6 × 2.8
			S1K	22							6 × 2.8
			S1K	25							8 × 3.3
SUS3-22 ● SUS3-22J15 ● SUS3-22J16 ● SUS3-22J18 ● SUS3-22J19 ● SUS3-22J20 ● SUS3-22J22 ● SUS3-22J25 ● SUS3-22J28 ● SUS3-22J30 ● SUS3-22J32	m3	22	S1	15	54	66	72	30	20	50	—
			S1K	15							5 × 2.3
			S1K	16							5 × 2.3
			S1K	18							6 × 2.8
			S1K	19							6 × 2.8
			S1K	20							6 × 2.8
			S1K	22							6 × 2.8
			S1K	25							8 × 3.3
SUS3-24 ● SUS3-24J15 ● SUS3-24J16 ● SUS3-24J18 ● SUS3-24J19 ● SUS3-24J20 ● SUS3-24J22 ● SUS3-24J25 ● SUS3-24J28 ● SUS3-24J30 ● SUS3-24J32	m3	24	S1	15	58	72	78	30	20	50	—
			S1K	15							5 × 2.3
			S1K	16							5 × 2.3
			S1K	18							6 × 2.8
			S1K	19							6 × 2.8
			S1K	20							6 × 2.8
			S1K	22							6 × 2.8
			S1K	25							8 × 3.3
SUS3-25 ● SUS3-25J20 ● SUS3-25J22 ● SUS3-25J25 ● SUS3-25J28 ● SUS3-25J30 ● SUS3-25J32 ● SUS3-25J35	m3	25	S1	20	60	75	81	30	20	50	—
			S1K	20							6 × 2.8
			S1K	22							6 × 2.8
			S1K	25							8 × 3.3
			S1K	28							8 × 3.3
			S1K	30							8 × 3.3
			S1K	32							10 × 3.3
			S1K	35							10 × 3.3

[Caution on Product Characteristics]

- ① The allowable torques shown in the table are calculated values according to the assumed usage conditions. Please see page 35 for more details.
- ② The backlash values shown in the table are the theoretical values for the backlash in the normal direction of a pair of identical gears in mesh.

[Caution on Secondary Operations]

- ① Please read "Caution on Performing Secondary Operations" (Page 36) when performing modifications and/or secondary operations for safety concerns. Haguruma Kobo, the KHK's system for quick modification of KHK stock gears is also available.
- ② Avoid performing secondary operations that narrow the tooth width as it affects precision and strength.



S1K



Set Screw		Allowable torque (N·m)		Allowable torque (kgf·m)		Backlash (mm)	Weight (kg)	Catalog No. ● : J Series (Available-on-request)
Size	J	Bending strength	Surface durability	Bending strength	Surface durability			
—	—						0.46	SUS3-15
M4	10	55.1	3.71	5.62	0.38	0.14~0.32	0.46	●SUS3-15J15
M4	10						0.45	●SUS3-15J16
M5	10						0.42	●SUS3-15J18
M5	10						0.41	●SUS3-15J19
—	—						0.53	SUS3-16
M4	10	61.1	4.29	6.23	0.44	0.14~0.32	0.52	●SUS3-16J15
M4	10						0.52	●SUS3-16J16
M5	10						0.49	●SUS3-16J18
M5	10						0.48	●SUS3-16J19
M5	10						0.47	●SUS3-16J20
M5	10						0.44	●SUS3-16J22
—	—						0.66	SUS3-18
M4	10	73.3	5.59	7.47	0.57	0.14~0.32	0.66	●SUS3-18J15
M4	10						0.65	●SUS3-18J16
M5	10						0.62	●SUS3-18J18
M5	10						0.61	●SUS3-18J19
M5	10						0.60	●SUS3-18J20
M5	10						0.57	●SUS3-18J22
—	—						0.90	SUS3-20
M4*	10	85.8	7.07	8.74	0.72	0.14~0.32	0.89	●SUS3-20J15
M4*	10						0.88	●SUS3-20J16
M5	10						0.86	●SUS3-20J18
M5	10						0.85	●SUS3-20J19
M5	10						0.83	●SUS3-20J20
M5	10						0.81	●SUS3-20J22
M6	10						0.76	●SUS3-20J25
M6	10						0.71	●SUS3-20J28
M6	10						0.68	●SUS3-20J30
M6	10						0.68	●SUS3-20J30
—	—						1.09	SUS3-22
M4*	10	98.5	8.73	10.0	0.89	0.18~0.38	1.08	●SUS3-22J15
M4*	10						1.07	●SUS3-22J16
M5*	10						1.05	●SUS3-22J18
M5*	10						1.04	●SUS3-22J19
M5	10						1.02	●SUS3-22J20
M5	10						1.00	●SUS3-22J22
M6	10						0.95	●SUS3-22J25
M6	10						0.90	●SUS3-22J28
M6	10						0.87	●SUS3-22J30
M8	10						0.82	●SUS3-22J32
—	—						1.30	SUS3-24
M4*	10	111	10.6	11.4	1.08	0.18~0.38	1.29	●SUS3-24J15
M4*	10						1.28	●SUS3-24J16
M5*	10						1.25	●SUS3-24J18
M5*	10						1.24	●SUS3-24J19
M5*	10						1.23	●SUS3-24J20
M5*	10						1.20	●SUS3-24J22
M6	10						1.16	●SUS3-24J25
M6	10						1.11	●SUS3-24J28
M6	10						1.07	●SUS3-24J30
M8	10						1.03	●SUS3-24J32
—	—						1.35	SUS3-25
M5*	10	118	11.6	12.0	1.18	0.18~0.38	1.34	●SUS3-25J20
M5*	10						1.31	●SUS3-25J22
M6	10						1.27	●SUS3-25J25
M6	10						1.22	●SUS3-25J28
M6	10						1.18	●SUS3-25J30
M8	10						1.14	●SUS3-25J32
M8	10						1.14	●SUS3-25J32
M8	10						1.08	●SUS3-25J35

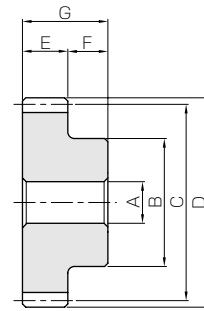
[Caution on J series]

- ① As available-on-request products, requires a lead-time for shipping within 3 working-days (excludes the day ordered), after placing an order. Please allow additional shipping time to get to your local distributor.
- ② Number of products we can process for one order is 1 to 20 units. For quantities of 21 or more pieces, we need to quote price and lead time.
- ③ Keyways are made according to JIS B1301 standards, Js 9 tolerance.
- ④ Certain products which would otherwise have a very long tapped hole are conterbored to reduce the length of the tap. (Products marked with "*" are tap size).
- ⑤ For products having a tapped hole, a set screw is included.



Specifications	
Precision grade	JIS grade N8 (JIS B1702-1: 1998) * JIS grade 4 (JIS B1702: 1976)
Gear teeth	Standard full depth
Pressure angle	20°
Material	SUS303
Heat treatment	—
Tooth hardness	less than 187HB

* The precision grade of J Series products is equivalent to the value shown in the table.



S1

Catalog No. ● : J Series (Available-on-request)	Module	No. of teeth	Shape	Bore	Hub dia.	Pitch dia.	Outside dia.	Face width	Hub width	Total length	Keyway
				A _{H7}	B	C	D	E	F	G	Width×Depth
SUS3-28 ● SUS3-28J20 ● SUS3-28J22 ● SUS3-28J25 ● SUS3-28J28 ● SUS3-28J30 ● SUS3-28J32 ● SUS3-28J35 ● SUS3-28J40	m3	28	S1	20	70	84	90	30	20	50	—
			S1K	20							6 × 2.8
			S1K	22							6 × 2.8
			S1K	25							8 × 3.3
			S1K	28							8 × 3.3
			S1K	30							8 × 3.3
			S1K	32							10 × 3.3
			S1K	35							10 × 3.3
			S1K	40							12 × 3.3
			SUS3-30 ● SUS3-30J20 ● SUS3-30J22 ● SUS3-30J25 ● SUS3-30J28 ● SUS3-30J30 ● SUS3-30J32 ● SUS3-30J35 ● SUS3-30J40 ● SUS3-30J45	m3							30
S1K	20	6 × 2.8									
S1K	22	6 × 2.8									
S1K	25	8 × 3.3									
S1K	28	8 × 3.3									
S1K	30	8 × 3.3									
S1K	32	10 × 3.3									
S1K	35	10 × 3.3									
S1K	40	12 × 3.3									
S1K	45	14 × 3.8									

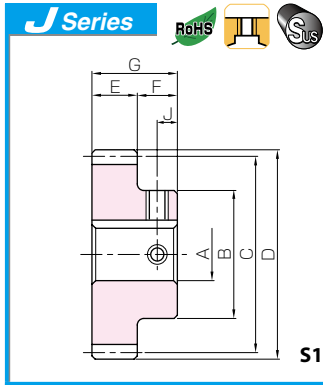
[Caution on Product Characteristics]

- ① The allowable torques shown in the table are calculated values according to the assumed usage conditions. Please see page 35 for more details.
- ② The backlash values shown in the table are the theoretical values for the backlash in the normal direction of a pair of identical gears in mesh.

[Caution on Secondary Operations]

- ① Please read "Caution on Performing Secondary Operations" (Page 36) when performing modifications and/or secondary operations for safety concerns. Haguruma Kobo, the KHK's system for quick modification of KHK stock gears is also available.
- ② Avoid performing secondary operations that narrow the tooth width as it affects precision and strength.

- Spur Gears
- Helical Gears
- Internal Gears
- Racks
- CP Racks & Pinions
- Miter Gears
- Bevel Gears
- Screw Gears
- Worm Gear Pair
- Bevel Gearboxes
- Other Products



Stainless Steel Spur Gears

Newly added



Set Screw		Allowable torque (N·m)		Allowable torque (kgf·m)		Backlash (mm)	Weight (kg)	Catalog No. ● : J Series (Available-on-request)	
Size	J	Bending strength	Surface durability	Bending strength	Surface durability				
—	—	138	14.7	14.1	1.50	0.18~0.38	1.77	SUS3-28	
M5*	10							1.76	● SUS3-28J20
M5*	10							1.73	● SUS3-28J22
M6*	10							1.69	● SUS3-28J25
M6*	10							1.64	● SUS3-28J28
M6	10							1.60	● SUS3-28J30
M8	10							1.56	● SUS3-28J32
M8	10							1.50	● SUS3-28J35
M8	10							1.38	● SUS3-28J40
M5*	10	151	17.0	15.4	1.74	0.18~0.38	2.06	SUS3-30	
M5*	10							2.04	● SUS3-30J20
M6*	10							2.01	● SUS3-30J22
M6*	10							1.97	● SUS3-30J25
M6*	10							1.92	● SUS3-30J28
M6*	10							1.88	● SUS3-30J30
M8	10							1.83	● SUS3-30J32
M8	10							1.77	● SUS3-30J35
M8	10							1.66	● SUS3-30J40
M10	10							1.52	● SUS3-30J45

[Caution on J series]

- ① As available-on-request products, requires a lead-time for shipping within 3 working-days (excludes the day ordered), after placing an order. Please allow additional shipping time to get to your local distributor.
- ② Number of products we can process for one order is 1 to 20 units. For quantities of 21 or more pieces, we need to quote price and lead time.
- ③ Keyways are made according to JIS B1301 standards, Js 9 tolerance.
- ④ Certain products which would otherwise have a very long tapped hole are conterbored to reduce the length of the tap. (Products marked with " * " are tap size).
- ⑤ For products having a tapped hole, a set screw is included.

Spur Gears

Helical Gears

Internal Gears

Racks

CP Racks & Pinions

Miter Gears

Bevel Gears

Screw Gears

Worm Gear Pair

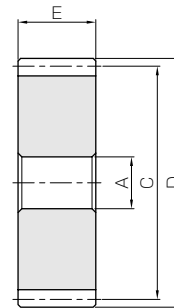
Bevel Gearboxes

Other Products



Specifications	
Precision grade	JIS grade N8 (JIS B1702-1: 1998) * JIS grade 4 (JIS B1702: 1976)
Gear teeth	Standard full depth
Pressure angle	20°
Material	SUS303
Heat treatment	—
Tooth hardness	less than 187HB

* The precision grade of J Series products is equivalent to the value shown in the table.



S5

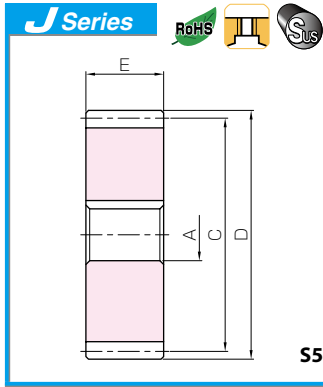
Catalog No. ● : J Series (Available-on-request)	Module	No. of teeth	Shape	Bore	Hub dia.	Pitch dia.	Outside dia.	Face width	Hub width	Total length	Keyway
				A _{H7}	B	C	D	E	F	G	Width×Depth
SUSA3-32 ● SUSA3-32J20 ● SUSA3-32J22 ● SUSA3-32J25 ● SUSA3-32J28 ● SUSA3-32J30 ● SUSA3-32J32 ● SUSA3-32J35 ● SUSA3-32J40 ● SUSA3-32J45	m3	32	S5	20	—	96	102	30	—	—	—
S5K			20	6 × 2.8							
S5K			22	6 × 2.8							
S5K			25	8 × 3.3							
S5K			28	8 × 3.3							
S5K			30	8 × 3.3							
S5K			32	10 × 3.3							
S5K			35	10 × 3.3							
S5K			40	12 × 3.3							
S5K		45	14 × 3.8								
SUSA3-35 ● SUSA3-35J20 ● SUSA3-35J22 ● SUSA3-35J25 ● SUSA3-35J28 ● SUSA3-35J30 ● SUSA3-35J32 ● SUSA3-35J35 ● SUSA3-35J40 ● SUSA3-35J45		35	S5	20	—	105	111	30	—	—	—
S5K			20	6 × 2.8							
S5K			22	6 × 2.8							
S5K			25	8 × 3.3							
S5K			28	8 × 3.3							
S5K			30	8 × 3.3							
S5K			32	10 × 3.3							
S5K			35	10 × 3.3							
S5K			40	12 × 3.3							
S5K		45	14 × 3.8								
SUSA3-36 ● SUSA3-36J20 ● SUSA3-36J22 ● SUSA3-36J25 ● SUSA3-36J28 ● SUSA3-36J30 ● SUSA3-36J32 ● SUSA3-36J35 ● SUSA3-36J40 ● SUSA3-36J45 ● SUSA3-36J50		36	S5	20	—	108	114	30	—	—	—
S5K			20	6 × 2.8							
S5K			22	6 × 2.8							
S5K			25	8 × 3.3							
S5K	28		8 × 3.3								
S5K	30		8 × 3.3								
S5K	32		10 × 3.3								
S5K	35		10 × 3.3								
S5K	40		12 × 3.3								
S5K	45	14 × 3.8									
S5K	50	14 × 3.8									
SUSA3-40 ● SUSA3-40J25 ● SUSA3-40J28 ● SUSA3-40J30 ● SUSA3-40J32 ● SUSA3-40J35 ● SUSA3-40J40 ● SUSA3-40J45 ● SUSA3-40J50	40	S5	25	—	120	126	30	—	—	—	
S5K		25	8 × 3.3								
S5K		28	8 × 3.3								
S5K		30	8 × 3.3								
S5K		32	10 × 3.3								
S5K		35	10 × 3.3								
S5K		40	12 × 3.3								
S5K		45	14 × 3.8								
S5K		50	14 × 3.8								
SUSA3-42 ● SUSA3-42J25 ● SUSA3-42J28 ● SUSA3-42J30 ● SUSA3-42J32 ● SUSA3-42J35 ● SUSA3-42J40 ● SUSA3-42J45 ● SUSA3-42J50	42	S5	25	—	126	132	30	—	—	—	
S5K		25	8 × 3.3								
S5K		28	8 × 3.3								
S5K		30	8 × 3.3								
S5K		32	10 × 3.3								
S5K		35	10 × 3.3								
S5K		40	12 × 3.3								
S5K		45	14 × 3.8								
S5K		50	14 × 3.8								
SUSA3-45 ● SUSA3-45J25 ● SUSA3-45J28 ● SUSA3-45J30 ● SUSA3-45J32 ● SUSA3-45J35 ● SUSA3-45J40 ● SUSA3-45J45 ● SUSA3-45J50	45	S5	25	—	135	141	30	—	—	—	
S5K		25	8 × 3.3								
S5K		28	8 × 3.3								
S5K		30	8 × 3.3								
S5K		32	10 × 3.3								
S5K		35	10 × 3.3								
S5K		40	12 × 3.3								
S5K		45	14 × 3.8								
S5K		50	14 × 3.8								

[Caution on Product Characteristics]

- ① The allowable torques shown in the table are calculated values according to the assumed usage conditions. Please see page 35 for more details.
- ② The backlash values shown in the table are the theoretical values for the backlash in the normal direction of a pair of identical gears in mesh.

[Caution on Secondary Operations]

- ① Please read "Caution on Performing Secondary Operations" (Page 36) when performing modifications and/or secondary operations for safety concerns. Haguruma Kobo, the KHK's system for quick modification of KHK stock gears is also available.
- ② Avoid performing secondary operations that narrow the tooth width as it affects precision and strength.



Stainless Steel Spur Gears

Newly added



Spur Gears

Helical Gears

Internal Gears

Racks

CP Racks & Pinions

Miter Gears

Bevel Gears

Screw Gears

Worm Gear Pair

Bevel Gearboxes

Other Products

Set Screw		Allowable torque (N·m)		Allowable torque (kgf·m)		Backlash (mm)	Weight (kg)	Catalog No. ● : J Series (Available-on-request)
Size	J	Bending strength	Surface durability	Bending strength	Surface durability			
—	—	165	19.5	16.8	1.99	0.18~0.38	1.62 1.62 1.60 1.57 1.54 1.52 1.50 1.46 1.39 1.31	SUSA3-32 ●SUSA3-32J20 ●SUSA3-32J22 ●SUSA3-32J25 ●SUSA3-32J28 ●SUSA3-32J30 ●SUSA3-32J32 ●SUSA3-32J35 ●SUSA3-32J40 ●SUSA3-32J45
—	—	185	23.6	18.9	2.40	0.18~0.38	1.95 1.95 1.93 1.91 1.88 1.85 1.83 1.79 1.72 1.64	SUSA3-35 ●SUSA3-35J20 ●SUSA3-35J22 ●SUSA3-35J25 ●SUSA3-35J28 ●SUSA3-35J30 ●SUSA3-35J32 ●SUSA3-35J35 ●SUSA3-35J40 ●SUSA3-35J45
—	—	192	25.0	19.6	2.55	0.18~0.38	2.07 2.07 2.05 2.02 1.99 1.97 1.95 1.91 1.84 1.76 1.67	SUSA3-36 ●SUSA3-36J20 ●SUSA3-36J22 ●SUSA3-36J25 ●SUSA3-36J28 ●SUSA3-36J30 ●SUSA3-36J32 ●SUSA3-36J35 ●SUSA3-36J40 ●SUSA3-36J45 ●SUSA3-36J50
—	—	220	31.3	22.4	3.19	0.18~0.38	2.53 2.53 2.50 2.47 2.45 2.41 2.34 2.26 2.17	SUSA3-40 ●SUSA3-40J25 ●SUSA3-40J28 ●SUSA3-40J30 ●SUSA3-40J32 ●SUSA3-40J35 ●SUSA3-40J40 ●SUSA3-40J45 ●SUSA3-40J50
—	—	234	34.7	23.9	3.54	0.20~0.44	2.80 2.80 2.77 2.75 2.72 2.68 2.61 2.53 2.45	SUSA3-42 ●SUSA3-42J25 ●SUSA3-42J28 ●SUSA3-42J30 ●SUSA3-42J32 ●SUSA3-42J35 ●SUSA3-42J40 ●SUSA3-42J45 ●SUSA3-42J50
—	—	255	40.2	26.0	4.10	0.20~0.44	3.23 3.23 3.20 3.18 3.15 3.12 3.05 2.96 2.88	SUSA3-45 ●SUSA3-45J25 ●SUSA3-45J28 ●SUSA3-45J30 ●SUSA3-45J32 ●SUSA3-45J35 ●SUSA3-45J40 ●SUSA3-45J45 ●SUSA3-45J50

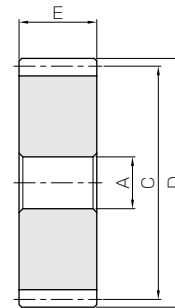
[Caution on J series]

- ① As available-on-request products, requires a lead-time for shipping within **3 working-days** (excludes the day ordered), after placing an order. Please allow additional shipping time to get to your local distributor.
- ② Number of products we can process for one order is **1 to 20 units**. For quantities of 21 or more pieces, we need to quote price and lead time.
- ③ Keyways are made according to JIS B1301 standards, Js 9 tolerance.



Specifications	
Precision grade	JIS grade N8 (JIS B1702-1: 1998) * JIS grade 4 (JIS B1702: 1976)
Gear teeth	Standard full depth
Pressure angle	20°
Material	SUS303
Heat treatment	—
Tooth hardness	less than 187HB

* The precision grade of J Series products is equivalent to the value shown in the table.



S5

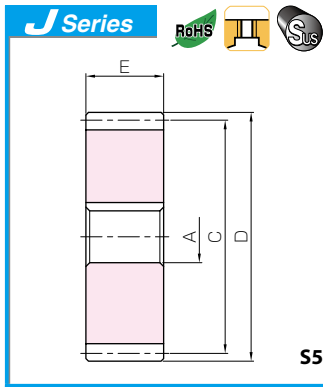
Catalog No. ●: J Series (Available-on-request)	Module	No. of teeth	Shape	Bore	Hub dia.	Pitch dia.	Outside dia.	Face width	Hub width	Total length	Keyway
				A _{H7}	B	C	D	E	F	G	WidthxDepth
SUSA3-48 ● SUSA3-48J25 ● SUSA3-48J28 ● SUSA3-48J30 ● SUSA3-48J32 ● SUSA3-48J35 ● SUSA3-48J40 ● SUSA3-48J45 ● SUSA3-48J50	m3	48	S5	25	—	144	150	30	—	—	—
			S5K	25							8 x 3.3
			S5K	28							8 x 3.3
			S5K	30							8 x 3.3
			S5K	32							10 x 3.3
			S5K	35							10 x 3.3
			S5K	40							12 x 3.3
			S5K	45							14 x 3.8
			S5K	50							14 x 3.8
			SUSA3-50 ● SUSA3-50J25 ● SUSA3-50J28 ● SUSA3-50J30 ● SUSA3-50J32 ● SUSA3-50J35 ● SUSA3-50J40 ● SUSA3-50J45 ● SUSA3-50J50	m3							50
S5K	25	8 x 3.3									
S5K	28	8 x 3.3									
S5K	30	8 x 3.3									
S5K	32	10 x 3.3									
S5K	35	10 x 3.3									
S5K	40	12 x 3.3									
S5K	45	14 x 3.8									
S5K	50	14 x 3.8									
SUSA3-55 ● SUSA3-55J25 ● SUSA3-55J28 ● SUSA3-55J30 ● SUSA3-55J32 ● SUSA3-55J35 ● SUSA3-55J40 ● SUSA3-55J45 ● SUSA3-55J50	m3	55			S5	25	—	165	171	30	
			S5K	25	8 x 3.3						
			S5K	28	8 x 3.3						
			S5K	30	8 x 3.3						
			S5K	32	10 x 3.3						
			S5K	35	10 x 3.3						
			S5K	40	12 x 3.3						
			S5K	45	14 x 3.8						
			S5K	50	14 x 3.8						
			SUSA3-56 ● SUSA3-56J25 ● SUSA3-56J28 ● SUSA3-56J30 ● SUSA3-56J32 ● SUSA3-56J35 ● SUSA3-56J40 ● SUSA3-56J45 ● SUSA3-56J50	m3	56	S5					25
S5K	25	8 x 3.3									
S5K	28	8 x 3.3									
S5K	30	8 x 3.3									
S5K	32	10 x 3.3									
S5K	35	10 x 3.3									
S5K	40	12 x 3.3									
S5K	45	14 x 3.8									
S5K	50	14 x 3.8									
SUSA3-60 ● SUSA3-60J25 ● SUSA3-60J28 ● SUSA3-60J30 ● SUSA3-60J32 ● SUSA3-60J35 ● SUSA3-60J40 ● SUSA3-60J45 ● SUSA3-60J50	m3	60				S5	25	—	180	186	30
			S5K	25	8 x 3.3						
			S5K	28	8 x 3.3						
			S5K	30	8 x 3.3						
			S5K	32	10 x 3.3						
			S5K	35	10 x 3.3						
			S5K	40	12 x 3.3						
			S5K	45	14 x 3.8						
			S5K	50	14 x 3.8						

[Caution on Product Characteristics]

- ① The allowable torques shown in the table are calculated values according to the assumed usage conditions. Please see page 35 for more details.
- ② The backlash values shown in the table are the theoretical values for the backlash in the normal direction of a pair of identical gears in mesh.

[Caution on Secondary Operations]

- ① Please read "Caution on Performing Secondary Operations" (Page 36) when performing modifications and/or secondary operations for safety concerns. Haguruma Kobo, the KHK's system for quick modification of KHK stock gears is also available.
- ② Avoid performing secondary operations that narrow the tooth width as it affects precision and strength.



Stainless Steel Spur Gears

Newly added



Set Screw		Allowable torque (N·m)		Allowable torque (kgf·m)		Backlash (mm)	Weight (kg)	Catalog No. ● : J Series (Available-on-request)
Size	J	Bending strength	Surface durability	Bending strength	Surface durability			
—	—	276	46.2	28.2	4.71	0.20~0.44	3.70 3.69 3.66 3.64 3.62 3.58 3.51 3.43 3.34	SUSA3-48 ● SUSA3-48J25 ● SUSA3-48J28 ● SUSA3-48J30 ● SUSA3-48J32 ● SUSA3-48J35 ● SUSA3-48J40 ● SUSA3-48J45 ● SUSA3-48J50
—	—	290	50.4	29.6	5.14	0.20~0.44	4.02 4.01 3.98 3.96 3.94 3.90 3.83 3.75 3.66	SUSA3-50 ● SUSA3-50J25 ● SUSA3-50J28 ● SUSA3-50J30 ● SUSA3-50J32 ● SUSA3-50J35 ● SUSA3-50J40 ● SUSA3-50J45 ● SUSA3-50J50
—	—	326	61.7	33.2	6.30	0.20~0.44	4.89 4.88 4.85 4.83 4.81 4.77 4.70 4.62 4.53	SUSA3-55 ● SUSA3-55J25 ● SUSA3-55J28 ● SUSA3-55J30 ● SUSA3-55J32 ● SUSA3-55J35 ● SUSA3-55J40 ● SUSA3-55J45 ● SUSA3-55J50
—	—	333	64.1	33.9	6.54	0.20~0.44	5.07 5.07 5.04 5.02 4.99 4.95 4.88 4.80 4.72	SUSA3-56 ● SUSA3-56J25 ● SUSA3-56J28 ● SUSA3-56J30 ● SUSA3-56J32 ● SUSA3-56J35 ● SUSA3-56J40 ● SUSA3-56J45 ● SUSA3-56J50
—	—	362	74.3	36.9	7.58	0.20~0.44	5.84 5.83 5.80 5.78 5.76 5.72 5.65 5.57 5.48	SUSA3-60 ● SUSA3-60J25 ● SUSA3-60J28 ● SUSA3-60J30 ● SUSA3-60J32 ● SUSA3-60J35 ● SUSA3-60J40 ● SUSA3-60J45 ● SUSA3-60J50

[Caution on J series] ① As available-on-request products, requires a lead-time for shipping within 3 working-days (excludes the day ordered), after placing an order.

Please allow additional shipping time to get to your local distributor.

② Number of products we can process for one order is 1 to 20 units. For quantities of 21 or more pieces, we need to quote price and lead time.

③ Keyways are made according to JIS B1301 standards, Js 9 tolerance.

Spur Gears

Helical Gears

Internal Gears

Racks

CP Racks & Pinions

Miter Gears

Bevel Gears

Screw Gears

Worm Gear Pair

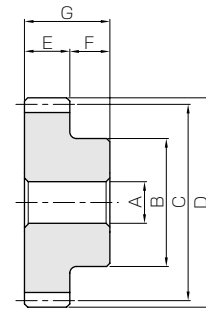
Bevel Gearboxes

Other Products



Specifications	
Precision grade	JIS grade N8 (JIS B1702-1: 1998) * JIS grade 4 (JIS B1702: 1976)
Gear teeth	Standard full depth
Pressure angle	20°
Material	SUS303
Heat treatment	—
Tooth hardness	less than 187HB

* The precision grade of J Series products is equivalent to the value shown in the table.

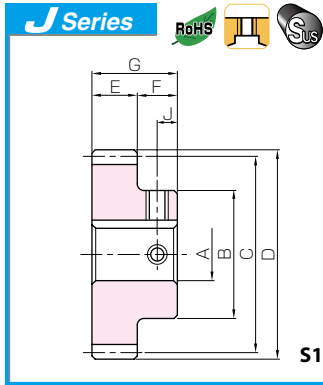


S1

Catalog No. ●: J Series (Available-on-request)	Module	No. of teeth	Shape	Bore	Hub dia.	Pitch dia.	Outside dia.	Face width	Hub width	Total length	Keyway
				A _{H7}	B	C	D	E	F	G	Width×Depth
SUS4-15 ●SUS4-15J20 ●SUS4-15J22 ●SUS4-15J25	m4	15	S1	20	45	60	68	40	25	65	—
			S1K	20							6 × 2.8
			S1K	22							6 × 2.8
			S1K	25							8 × 3.3
SUS4-20 ●SUS4-20J20 ●SUS4-20J22 ●SUS4-20J25 ●SUS4-20J28 ●SUS4-20J30 ●SUS4-20J32 ●SUS4-20J35	m4	20	S1	20	65	80	88	40	25	65	—
			S1K	20							6 × 2.8
			S1K	22							6 × 2.8
			S1K	25							8 × 3.3
			S1K	28							8 × 3.3
			S1K	30							8 × 3.3
			S1K	32							10 × 3.3
			S1K	35							10 × 3.3
SUS4-25 ●SUS4-25J20 ●SUS4-25J22 ●SUS4-25J25 ●SUS4-25J28 ●SUS4-25J30 ●SUS4-25J32 ●SUS4-25J35 ●SUS4-25J40 ●SUS4-25J45 ●SUS4-25J50	m4	25	S1	20	84	100	108	40	25	65	—
			S1K	20							6 × 2.8
			S1K	22							6 × 2.8
			S1K	25							8 × 3.3
			S1K	28							8 × 3.3
			S1K	30							8 × 3.3
			S1K	32							10 × 3.3
			S1K	35							10 × 3.3
			S1K	40							12 × 3.3
			S1K	45							14 × 3.8
S1K	50	14 × 3.8									
SUS4-30 ●SUS4-30J20 ●SUS4-30J22 ●SUS4-30J25 ●SUS4-30J28 ●SUS4-30J30 ●SUS4-30J32 ●SUS4-30J35 ●SUS4-30J40 ●SUS4-30J45 ●SUS4-30J50	m4	30	S1	20	100	120	128	40	25	65	—
			S1K	20							6 × 2.8
			S1K	22							6 × 2.8
			S1K	25							8 × 3.3
			S1K	28							8 × 3.3
			S1K	30							8 × 3.3
			S1K	32							10 × 3.3
			S1K	35							10 × 3.3
			S1K	40							12 × 3.3
			S1K	45							14 × 3.8
S1K	50	14 × 3.8									

[Caution on Product Characteristics] ① The allowable torques shown in the table are calculated values according to the assumed usage conditions. Please see page 35 for more details.
② The backlash values shown in the table are the theoretical values for the backlash in the normal direction of a pair of identical gears in mesh.

[Caution on Secondary Operations] ① Please read “Caution on Performing Secondary Operations” (Page 36) when performing modifications and/or secondary operations for safety concerns. Haguruma Kobo, the KHK’s system for quick modification of KHK stock gears is also available.
② Avoid performing secondary operations that narrow the tooth width as it affects precision and strength.



Stainless Steel Spur Gears

Newly added



Set Screw		Allowable torque (N·m)		Allowable torque (kgf·m)		Backlash (mm)	Weight (kg)	Catalog No. ● : J Series (Available-on-request)
Size	J	Bending strength	Surface durability	Bending strength	Surface durability			
—	—	131	9.06	13.3	0.92	0.18~0.38	1.03 1.02 0.99 0.93	SUS4-15 ● SUS4-15J20 ● SUS4-15J22 ● SUS4-15J25
M5	12.5							
M5	12.5							
M6	12.5							
—	—	203	17.3	20.7	1.76	0.18~0.38	2.06 2.04 2.01 1.94 1.88 1.84 1.78 1.70	SUS4-20 ● SUS4-20J20 ● SUS4-20J22 ● SUS4-20J25 ● SUS4-20J28 ● SUS4-20J30 ● SUS4-20J32 ● SUS4-20J35
M5*	12.5							
M5*	12.5							
M6	12.5							
M6	12.5							
M6	12.5							
M8	12.5							
M8	12.5							
—	—	280	28.3	28.5	2.89	0.20~0.44	3.37 3.35 3.32 3.26 3.19 3.15 3.09 3.01 2.86 2.67 2.49	SUS4-25 ● SUS4-25J20 ● SUS4-25J22 ● SUS4-25J25 ● SUS4-25J28 ● SUS4-25J30 ● SUS4-25J32 ● SUS4-25J35 ● SUS4-25J40 ● SUS4-25J45 ● SUS4-25J50
M5*	12.5							
M5*	12.5							
M6*	12.5							
M6*	12.5							
M6*	12.5							
M8	12.5							
M8	12.5							
M8	12.5							
M10	12.5							
M10	12.5							
—	—	359	41.7	36.6	4.25	0.20~0.44	4.90 4.88 4.85 4.78 4.72 4.67 4.61 4.53 4.38 4.19 4.01	SUS4-30 ● SUS4-30J20 ● SUS4-30J22 ● SUS4-30J25 ● SUS4-30J28 ● SUS4-30J30 ● SUS4-30J32 ● SUS4-30J35 ● SUS4-30J40 ● SUS4-30J45 ● SUS4-30J50
M5*	12.5							
M5*	12.5							
M6*	12.5							
M6*	12.5							
M6*	12.5							
M8*	12.5							
M8*	12.5							
M8*	12.5							
M10	12.5							

[Caution on J series]

- ① As available-on-request products, requires a lead-time for shipping (from the factory) **5 working-days after placing an order**. Please allow additional shipping time to get to your local distributor.
- ② Number of products we can process for one order is **1 to 20 units**. For quantities of 21 or more pieces, we need to quote price and lead time.
- ③ Keyways are made according to JIS B1301 standards, Js 9 tolerance.
- ④ Certain products which would otherwise have a very long tapped hole are conterbored to reduce the length of the tap. (Products marked with "*" are tap size).
- ⑤ For products having a tapped hole, a set screw is included.

Spur Gears

Helical Gears

Internal Gears

Racks

CP Racks & Pinions

Miter Gears

Bevel Gears

Screw Gears

Worm Gear Pair

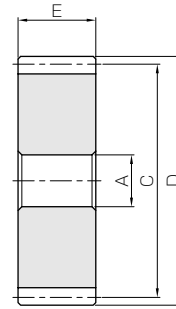
Bevel Gearboxes

Other Products



Specifications	
Precision grade	JIS grade N8 (JIS B1702-1: 1998) * JIS grade 4 (JIS B1702: 1976)
Gear teeth	Standard full depth
Pressure angle	20°
Material	SUS303
Heat treatment	—
Tooth hardness	less than 187HB

* The precision grade of J Series products is equivalent to the value shown in the table.



S5

Catalog No. ● : J Series (Available-on-request)	Module	No. of teeth	Shape	Bore	Hub dia.	Pitch dia.	Outside dia.	Face width	Hub width	Total length	Keyway
				A _{H7}	B	C	D	E	F	G	Width×Depth
SUSA4-40 ● SUSA4-40J30 ● SUSA4-40J32 ● SUSA4-40J35 ● SUSA4-40J40 ● SUSA4-40J45 ● SUSA4-40J50	m4	40	S5	30	—	160	168	40	—	—	—
			S5K	30							8 x 3.3
			S5K	32							10 x 3.3
			S5K	35							10 x 3.3
			S5K	40							12 x 3.3
			S5K	45							14 x 3.8
			S5K	50							14 x 3.8
SUSA4-50 ● SUSA4-50J30 ● SUSA4-50J32 ● SUSA4-50J35 ● SUSA4-50J40 ● SUSA4-50J45 ● SUSA4-50J50	m4	50	S5	30	—	200	208	40	—	—	—
			S5K	30							8 x 3.3
			S5K	32							10 x 3.3
			S5K	35							10 x 3.3
			S5K	40							12 x 3.3
			S5K	45							14 x 3.8
			S5K	50							14 x 3.8

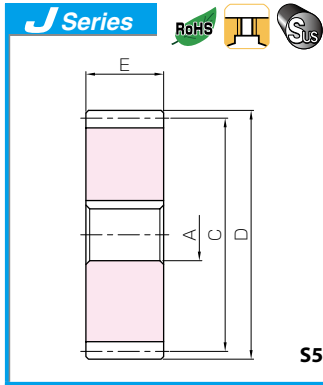
[Caution on Product Characteristics]

- ① The allowable torques shown in the table are calculated values according to the assumed usage conditions. Please see page 35 for more details.
- ② The backlash values shown in the table are the theoretical values for the backlash in the normal direction of a pair of identical gears in mesh.

[Caution on Secondary Operations]

- ① Please read “Caution on Performing Secondary Operations” (Page 36) when performing modifications and/or secondary operations for safety concerns. Haguruma Kobo, the KHK's system for quick modification of KHK stock gears is also available.
- ② Avoid performing secondary operations that narrow the tooth width as it affects precision and strength.

Spur Gears
Helical Gears
Internal Gears
Racks
CP Racks & Pinions
Miter Gears
Bevel Gears
Screw Gears
Worm Gear Pair
Bevel Gearboxes
Other Products



Stainless Steel Spur Gears

Newly added



Set Screw		Allowable torque (N·m)		Allowable torque (kgf·m)		Backlash (mm)	Weight (kg)	Catalog No. ● : J Series (Available-on-request)
Size	J	Bending strength	Surface durability	Bending strength	Surface durability			
—	—	521	77.1	53.2	7.86	0.20~0.44	6.05 6.04 6.01 5.96 5.87 5.76 5.64	SUSA4-40 ● SUSA4-40J30 ● SUSA4-40J32 ● SUSA4-40J35 ● SUSA4-40J40 ● SUSA4-40J45 ● SUSA4-40J50
—	—	573	103	58.5	10.5	0.24~0.52	9.58 9.57 9.54 9.49 9.40 9.29 9.17	SUSA4-50 ● SUSA4-50J30 ● SUSA4-50J32 ● SUSA4-50J35 ● SUSA4-50J40 ● SUSA4-50J45 ● SUSA4-50J50

- [Caution on J series]**
- ① As available-on-request products, requires a lead-time for shipping within **3 working-days (excludes the day ordered)**, after placing an order. Please allow additional shipping time to get to your local distributor.
 - ② Number of products we can process for one order is **1 to 20 units**. For quantities of 21 or more pieces, we need to quote price and lead time.
 - ③ Keyways are made according to JIS B1301 standards, Js 9 tolerance.

- Spur Gears
- Helical Gears
- Internal Gears
- Racks
- CP Racks & Pinions
- Miter Gears
- Bevel Gears
- Screw Gears
- Worm Gear Pair
- Bevel Gearboxes
- Other Products